

Manchester Evening Herald

MANCHESTER, CONN. THURSDAY, MARCH 13, 1975 — VOL. XCIV, No. 138

Manchester—A City of Village Charm

TWENTY-FOUR PAGES

PRICE: FIFTEEN CENTS

NEWS CAPSULES



Saigon Mobilizes To Stem Attack

Doesn't Expect Road
HARTFORD (UPI) — Gov. Ella T. Grasso says she does not expect the legislature will approve this session an expansion of Interstate-91 north of Hartford.

"We have heard considerable opposition to the widening of I-91, and I have no problem," she said Wednesday. "I don't expect any bill would come up from the legislature."

Asked if she would sign an I-91 bill, she repeated she did not expect one would be passed.

FBI in Judgeship Probe

WASHINGTON (UPI) — The long-delayed controversial nomination of former Gov. Thomas J. Meskill as a federal judge has again been stalled, this time until a probable FBI look into the Connecticut property leasing scandal.

An expected vote Wednesday by the Senate Judiciary Committee was put off for a week to further study conflicting testimony by Meskill and others involved in the leasing program.

Sen. Edward M. Kennedy, D-Mass., Wednesday prepared a letter for the approval of Sen. James Eastland, the chairman of the Judiciary Committee, asking the FBI to interview key figures in the scandal.

Refinery Rejected

AUGUSTA, Maine (UPI) — The Board of Environmental Protection has formally rejected the Pittston Co.'s proposed \$500 million oil refinery at Eastport but left the door open for the firm to pursue the issue.

The board Wednesday unanimously approved the refinery site and product piers but rejected the firm's proposed delivery system of crude oil.

Pittston vice president A.F. Kaulakus said he was "disappointed" but said within a week the firm would ask the BEP to hear additional testimony on the delivery system because "we've spent too much to drop it now."

Pittston's plan called for the delivery of crude oil by bringing supertankers through Head Harbour Passage, a narrow channel between Canadian Moose and Campobello Islands.

In Boston Race

BOSTON (UPI) — A South Boston state representative, who since September has led this city's anti-busing forces in opposing court ordered desegregation, has entered the race to end Kevin H. White's eight-year reign as mayor of Boston.

Rep. Raymond Flynn, a Democrat as well as all of White's viable challengers, Wednesday at a State House news conference became the second prominent Boston politician to challenge the mayor, with two more, and possibly a third, either unannounced or undecided.

The primary issues in the campaign, Flynn said, will involve busing and governmental accountability. Other issues will be the city's rising tax and crime rates.

Winged Fossil Found

WASHINGTON (UPI) — About 65 million years ago, a long-necked beast with wings 51 feet wide soared like a vulture over a west Texas stream bed in search of a meal from a fallen dinosaur, turtle or crocodile.

That's the scene that might be imagined on the basis of a report by Douglas Lawson in this week's issue of Science magazine.

Until now, most scientists had not believed any flying creature could be that big. But Lawson says he found the fossil bones of a such a winged reptile in the siltstone and sandstone of what once was a stream bed in west Texas' Big Bend National Park.

Hail Hits Memphis

A measure of the violence of late-winter weather sweeping from Texas to the Blue Ridge Mountains was the foot-thick hailstone that slammed through a roof in Tennessee. Add to that thunderstorms, flash floods and tornadoes.

A thunderstorm Wednesday dumped the 12-inch hailstone through the roof of a Memphis, Tenn., home, one woman drowned when she drove her car into a rain-filled Tennessee ditch and at least 17 persons were injured by tornadoes and high winds that hit Tennessee, Mississippi and Alabama.

A tornado swooped down on an elementary school at Charleston, Miss., demolishing three portable classrooms. The twister struck minutes after 87 children and teachers — alerted by a tornado warning — moved into the hallway of the main school building. Six children suffered minor injuries.

Would Revise Access Law

HARTFORD (UPI) — Gov. Ella T. Grasso has proposed sweeping revisions in Connecticut's right-to-know law, including fines and jail terms for public officials who destroy records.

A three-member commission to consider right-to-know complaints with the power to issue subpoenas, administer oaths and take testimony should be created, she said Wednesday.

The proposed commission could overrule any secret action taken by a public body and could order disclosure of public records.

SAIGON (UPI) — Communist troops extended their six-day offensive to the fertile Mekong Delta rice growing region today, overrunning five hamlets and putting three district capitals under heavy attack, the Saigon command said.

The new assaults expanded fighting to the length of South Vietnam. Previous Communist thrusts struck at a 400-mile line running north of Saigon, but not south of the capital.

Viet Cong saboteurs blew up a bus with a land mine near Tra On district capital, 60 miles southwest of Saigon, killing 18 civilians and wounding 20 others, a Saigon military spokesman said.

The command said an Air Vietnam commercial flight was believed hit by enemy anti-aircraft fire Wednesday near Pleiku in the Central Highlands, killing all 26 persons aboard, including three Americans.

In Saigon, the government ordered a nationwide mobilization, placing every man from the ages of 17 to 35 on military call to meet the Communist drive.

In the Mekong Delta, Communist troops overran five hamlets near Ba Tri district town, 47 miles southwest of Saigon, the command said.

Communist troops attacked but were repulsed and suffered 46 men killed in attacks on three district capitals — county seats — in Ba Xuyen province, 100 miles south of Saigon, command spokesman Lt. Col. Le Trung Hien said.

The militia suffered 12 killed and 23 wounded, Hien said.

Government warplanes knocked out eight tanks and damaged nine others in driving back a Communist armored assault near the Parrot's Beak sector of the Cambodian border and Go Dau Ha district capital, 35 miles west of Saigon, the command said.

Pilots said they killed 77 Communist soldiers during the bombing missions.

In the five-day house-to-house battle for the provincial capital of Ban Me Thuot, 163 miles north of Saigon, field officers said the government poured in fresh troops to fight off thousands of tank-led North Vietnamese and Viet Cong troops.

The Saigon command said government forces cleared the city of Communist tanks, destroying 46 of them, but added, "It is too difficult to say what part (of the city) belonged to whom."

Nine Americans, three Canadians, one

Australian and one Filipino have been pinned down inside the city since fighting broke out.

Just 25 miles north of Ban Me Thuot, however, Communist forces Wednesday overran the district capital of Buon Ho —

the sixth district capital to fall since the beginning of the six-day offensive.

To the north, government relief forces trying to recapture overrun Tien Phuoc district capital, 340 miles north of Saigon,

met strong Communist resistance today, the command said.

In Saigon, the government announced it was mobilizing draft-eligible men "to meet the battlefield requirement in the face of large-scale Communist attacks."

Rocket Delays Cambodia Airlift

PHNOM PENH (UPI) — Rebel gunners fired a rocket into an ammunition dump at Pochentong airport today, setting off an explosion that forced a two-hour halt in the U.S. food, fuel and ammunition airlift to Cambodia's besieged capital.

An American spokesman said the rocket exploded in "a small ammunition storage area" at the airport and a series of explosions followed.

"I understand the flights resumed coming in about two hours later," the spokesman said.

"limited progress" in the week-old government push to recapture Tuol Leap, a rebel artillery position five miles west of the airport.

Heavy government airstrikes against Tuol Leap Wednesday killed 110 rebels, the sources said.

The Communist-led rebels launched heavy attacks against government troops trying to clear the road between Prek Phnom near the capital's northern outskirts and the Cambodian 7th Division base at Doem Ampil, six miles to the north.

Twenty-six rebels were killed in the fighting Wednesday, military sources said.

One western source said government troops around the capital defense perimeter "seem to be doing better the last few days—the lines are tighter, better and stronger."

Heavy fighting continued at the Mekong river towns of Neak Luong and Banam, 35 miles southeast of Phnom Penh, where rebel mortars caused fresh civilian casualties Wednesday.

House Votes \$6 Million For Emergency Jobs

WASHINGTON (UPI) — The House has approved a nearly \$6 billion emergency employment measure which exceeds President Ford's proposals by about \$4 million.

The \$5.9 billion appropriations measure passed the House Wednesday on a 313 to 113 roll call vote. It was sent to the Senate for what was expected to be speedy consideration.

President Ford has agreed to spend \$2 billion of the appropriation, but he has not indicated publicly whether he would accept the other \$4 billion. James T. Lynn, Ford's new budget director, said he will urge Ford to veto the bill because it more than doubles the money the administration wanted.

The money is spread over a score of programs already authorized in law by the last Congress, but which have not been fully funded.

The largest single item is \$1.65 billion for public service jobs, which Ford requested. He also supported the \$412.7 million expenditure for summer youth employment.

Other projects that would be funded include public works projects, repair and construction of federal buildings, stepped up rural water and sewer grants and increased money for college work-study programs.

Democrats estimated the money for public service jobs and other work projects would result in 900,000 "direct jobs" within eight months while "indirect

jobs" from private contracts for federal work would open up another 1 million jobs.

But Rep. Robert Michel, R-Ill., said the Democrats' claims of 180,000 new jobs from the \$1.65 billion for public service work is "deceptive." He said 50 per cent of the jobs to be filled under this program are "recalls — public employees laid off and who are called back to work."

Lynn defended his call for a veto on grounds that the money would be an "excessive stimulus" to the economy.

But House Speaker Carl Albert scoffed at Lynn's explanation.

"In the face of an economy with more than 7 million unemployed, with the greatest idle productive capacity in more than 30 years," Albert said, "I find this argument about excessive stimulus to the economy to be entirely without merit or support."

The Lottery

The winning number in the Connecticut state lottery drawn today was 05 yellow 448. The bonus number was 191749.



It Was a Happy 95th Birthday

Getting a helping hand in cutting her 95th birthday cake is Mrs. Flora Wells who was honored by her friends at a party Wednesday at Cronin Hall in Mayfair Gardens. Leon Enderlin, executive director of the Manchester

Actress Sues Supermarket

NEW YORK (UPI) — Award winning actress Cicely Tyson Wednesday filed a \$2 million damage suit in Manhattan Supreme Court against a supermarket alleging that she and a companion were searched without cause.

According to the suit the actress and her companion, Susan Siem, were seized by four Pathmark

employees last November and forced into a room where their belongings were searched.

The suit, which seeks an additional \$200,000 in damages for Miss Siem, said the search took place in full view of other shoppers.

Miss Tyson won an Emmy award for her 1974 role in "The Autobiography of Miss Jane Pittman."

Indictment Rumored In Hearst Case

HARRISBURG, Pa. (UPI) — A U.S. grand jury met here today but federal sources refused to comment on published reports that it might consider indictments against "a person or persons" for harboring fugitive newspaper heiress Patricia Hearst in northeastern Pennsylvania several months ago.

Usually cooperative federal sources would answer no inquiries concerning the grand jury session and the hotel at which U.S. Attorney John Cottone was staying said the federal prosecutor was refusing all calls.

"The grand jury will be meeting all day and indictments will be handed down this afternoon," Cottone was quoted by the Harrisburg Patriot as saying Wednesday night.

The Patriot said it had learned "from reliable local sources" that the grand jury later today would indict "a person or persons" accused of harboring Miss Hearst in Scranton.

It said the sources could not say whether the indictments also might involve the harboring of William and Emily Harris, Miss Hearst's companions in the Symbionese Liberation Army.

The Scranton Tribune also reported in its morning edition that the grand jury here would be asked to "consider" such an indictment. A similar report was carried in the San Francisco Chronicle.

The Tribune said Miss Hearst had been seen in the Scranton-Wilkes-Barre area earlier this year but, according to its sources, was no longer in the vicinity.

The Weather

Cloudy tonight with chance of light rain possibly mixed with light snow late tonight. Tomorrow snow flurries with increasing possibility of snow later in day. Temperatures in 30s.

Assembly Moving To Hike Sales Tax

HARTFORD (UPI) — Connecticut taxpayers can expect to feel the bite of higher taxes starting April 1 when a Democratic-sponsored increase in the sales tax is expected to go into effect.

Approval of the increase in the sales tax from 6 per cent to 7 per cent was considered certain today as the Democratic leadership readied the measure for swift action in both houses.

Gov. Ella T. Grasso said she would approve the increase in the current levy, which will become the nation's highest state levy.

Mrs. Grasso proposed increasing the levy to 7 per cent effective July 1 and expanding the tax to cover rentals of equipment and other personal property. Her proposal is estimated to produce \$88 million on top of the \$18 million expected under the April 1 increase, sought by Democratic legislative leaders to help cover the state's anticipated \$90 million deficit June 30.

The \$18 million increase in the sales tax and a bill to authorize \$31.6 million in emergency funding, also due for quick action, were the first two substantial bills of the 1975 session up for consideration. The senate was scheduled to act first on

the sales tax, which leaders say will be used to help cover the state's expected \$90 million budget deficit.

Former Gov. Thomas J. Meskill, a Republican, had increased the sales tax in several steps until it hit 7 per cent two years ago, then lowered it in successive steps back to 6 per cent to produce election-year tax cuts last fall.

The emergency funding bill, which includes \$25 million to cover unpaid medical bills inherited from the Meskill administration and unanticipated increases in the welfare caseload, was due for action in the house.

The Finance Committee voted 11-7 Wednesday to ask for approval of the tax hike.

Mrs. Grasso, who voiced half-hearted opposition to the increase, said she would sign it rather than let it lapse into law without her signature.

"The easy thing would be to let it sit and become law," she told newsmen Wednesday.

Although the Finance Committee had anticipated stiff opposition to the increase at a hearing Tuesday night, few people turned out for the session.

City Now Accepts...
en Register...
ing Sentinel...
ut...
field...
Reporter...
istol Press...
gram...
ver...
ite...
rld...
75

1
3
M
A
R
1
3

Manchester Evening Herald

OPINION

Light at End Of Housing Tunnel?

It's no news that 1974 was a devastating year for the housing industry, both when inflation was the specter haunting the economy and after unemployment became the No. 1 concern.

Just how devastating is shown by statistics in the latest "U.S. Housing Markets," a semi-annual survey published by Advance Mortgage Corp.

Home starts fell by a full third from the 1973 level and apartment starts by more than half. Only in the first year of the Depression and the first year after Pearl Harbor were there steeper declines.

Monthly mortgage payments increased nearly 30 per cent while consumer incomes were increasing only 6 per cent. This reversed a long-time trend in which consumer income consistently rose faster than mortgage payments.

For the first time, mortgage interest rates climbed high enough to interfere with usury laws. In at least a half-dozen of the 17 major markets surveyed, interest ceilings staff off severely constrained conventional lending for part or all of the year.

An entire sector of real estate finance was virtually wiped out. New lending commitments by real estate investment trusts were only 5 per cent of the volume of 1973.

There was a net loss in construction employment of 300,000 jobs, plus an undetermined number in construction-related industries. Builders were whipsawed between inflated materials costs and the escalating cost of money.

Fortunately, there are heartening signs of a turnaround in response to an easing of mortgage funds, especially in the single-family home market.

Housing starts will hit a 1.9-million annual rate for the fourth quarter of 1975, predicts Advance Mortgage president Robert J. Mylod, and will reach a total of 1.5 million or better for the full year, compared to the 1.35 million starts in 1974.

He expects there will be enough mortgage money available to support a two-million-plus annual rate of starts by the fourth quarter — if the demand is there.

Like the automobile industry, however, the housing industry has an inventory problem that will be a drag on recovery. As the year began, there were some 410,000 unsold homes, compared to 227,000 at the end of the previous slump in 1971. There was no condominium inventory in 1971, this year there are some 300,000 unsold units.

For the first time, mortgage interest rates climbed high enough to interfere with usury laws. In at least a half-dozen of the 17 major markets surveyed, interest ceilings staff off severely constrained conventional lending for part or all of the year.

Enemies of the People

The criminal arsonists who set fire to the Sponge Rubber Company plant at Shelton may or may not have been members of the Weathermen Organization but they were anarchists in the classical sense of the term.

If anyone has been cherishing romantic illusions that terrorist groups were "fighting the establishment" for the sake of the workers or poor people, this ought to be enough to open their eyes to reality.

Nothing has been accomplished by this which will help working people. On the contrary 1,000 employees are out of a job in the midst of a depression and the city of Shelton has lost its biggest taxpayer.

This was an anarchical act to destroy, which had no rhyme nor reason, except the demoralization of a community and its people.

It happened almost simultaneously with other acts of terrorism around the world including assassination of an American Consul in Argentina and the kidnapping of a candidate for mayor in West Germany.

We have learned how to combat hijacking of planes which was so vogueish a few years ago. Now we must learn how to prevent terrorism or if it occurs bring the perpetrators to summary justice.

The pseudo humanitarian and sham idealism of terrorists has been starkly delineated and exposed in Shelton. These people are not only enemies of the government and society. They are enemies of the people.



Low water after a light winter at Mansfield Hollow Lake (Photo by Reginald Pinto)



HERALD YESTERDAYS

25 Years Ago This date was a Sunday. The Herald did not publish.

10 Years Ago Results of teachers' poll indicate that about 68 per cent of Manchester school teachers disapprove of proposed salary schedule and majority favor withholding signatures from salary agreements.

Mr. and Mrs. H. Hayner Davidson of West Hartford, formerly of Manchester, are elected worthy patron and worthy matron of Temple Chapter, OES.

ALMANAC table with columns for days of the week and months.

By United Press International Today is Thursday, March 13, the 72nd day of 1975 with 293 to follow.

The moon is between its new phase and first quarter.

The morning stars are Mercury and Mars.

The evening stars are Venus, Jupiter and Saturn.

Those born on this date are under the sign of Pisces.

Swiss naturalist Charles Bonnet was born March 13, 1720.

On this day in history: In 1868, the U.S. Senate began impeachment proceedings against President Andrew Johnson on charges of "high crime and misdemeanors." He was acquitted in May.

WASHINGTON — Sen. Lawton Chiles, D-Fla., is a relative newcomer on Capitol Hill, which is to say he is still relatively unaware that members of Congress are a kind of nobility and therefore automatically entitled to pick the taxpayer's pocket.

Chiles has introduced a bill to eliminate taxpaid junkets overseas by lame-duck legislators, a practice that has cost the public millions of dollars over the past few decades. It is, indeed, not so much a practice as it is a tradition; such junkets are considered a last chance to dip into the public trough.

But Chiles insists on viewing the tradition with cold logic. He says he finds it "hard to imagine what worthwhile purpose is served by so-called 'fact-finding' trips abroad when the members involved won't be around to make use of any facts they should not live in a style which is too far removed from the problems of ordinary citizens."

Money would be saved by both the Chiles and Proxmire bills, Proxmire says his measure would cut government costs by \$13-million a year, and that's not peanuts on Main Street. But it is much more important in these hard times that our VIPs not only set an example of frugality, but alter their life-styles—a little—so they can better comprehend the problems of plain citizens. Force a bureaucrat to drive his own car in rush-hour traffic, or take a bus and he would soon identify with the shoe clerk trying to make it home before his 1968 model breaks down.

The people have become too solicitous of our public servants. We drummer them to the spoiled children, lavishing our tax dollars on their con-

venience and social status. Almost absent-mindedly, we have built up a ruling class insulated from the hard and often cruel facts of our own lives.

Richard Nixon was the most notorious official example of what Vebien called "conspicuous consumption." But too many other government VIPs are living too high on the hog. That is not what the Founding Fathers had in mind when they gave us a Republic.

Don Oakley

Conservation Is Energy Money-Saver



DON OAKLEY

At the recent National Governors' Conference in Washington, 28 state chief executives called for a voluntary conservation program "of massive proportions" for a trial period of four to six months before the government attempts to curb oil consumption by harsher means.

Their voices join a growing chorus. Shortly before the governors convened, the National Research Council, a branch of the National Academy of Sciences, made the alarming report that the nation's actual reserves of recoverable oil and gas may be less than half that estimated by government energy analysts and claimed that the goal of energy self-sufficiency by the 1980s is "essentially impossible."

Among other steps, the council recommended a "conservation ethic" which, in the words of Dr. Brian J. Skinner, chairman of the panel that produced the study, should become "kind of a national religion."

But just how much hope does conservation promise?

In a letter to President Ford in January, David Rockefeller, president of the American Society of Heating Refrigerating and Air-Conditioning Engineers, outlined a number of proposals he said could save 7.5 to 10 per cent of the total energy used in the U.S. — the equivalent of 3 to 4 million barrels of oil a day.

While we are learning how to harness such exotic forms of energy as sunlight and the heat inside the earth, savings can be made now by the use of existing technology applied to existing structures, said Rockefeller, without fueling inflation as the \$3 tax on oil would do or creating an onerous bureaucracy as rationing would do.

As an example of what a single company can accomplish, for the 12-month period ending Oct. 31, 1974, General Mills reduced its in-house energy consumption by 9.8 per cent, for a savings of \$1.5 million in fuel costs.

Continental Oil Company has launched an internal conservation program aimed at a 15 per cent reduction in its energy consumption, ranging from turning off unnecessary lights to making sure that boilers and furnaces are programmed for the most efficient operation.

According to Ken Gerhart, director of the program, the 15 per cent reduction would add up to an annual savings of \$28 million for the company, but more important, would be the equivalent of finding a new oil field producing over 8,000 barrels a day.

A substantial degree of energy conservation is an attainable goal for the nation," says Dr. John G. Myers, author of an analysis by the Conference Board. "He notes that the industrial sector of the economy, mainly manufacturing, consumed about 40 per cent of all the energy output in the U.S. Yet while manufacturing output rose 4.3 per cent a year between 1947 and 1971, energy use expanded only 2.7 per cent — this during a period when the earth inside the earth, savings can be made now by the use of existing technology applied to existing structures, said Rockefeller, without fueling inflation as the \$3 tax on oil would do or creating an onerous bureaucracy as rationing would do.

TODAY'S THOUGHT

Lord, I may not be yet willing for thee to be with me, but I am for thee to be with me.

(F.R. Meyer)

Rev. Stephen K. Jacobson, St. Mary's Episcopal Church



MAX LERNER

Kissinger On The Couch

NEW YORK CITY — All secretaries of state are put on the grid for roasting as part of the political ritual in the United States, but each for different reasons and in a different way.

There is, no doubt, a room for a detached psychological study of him. In this case each of the two is sloppy, and each suffers from being an amateur psychoanalyst with the results in full-fledged book form.

This happened also to a secretary of state and to a prime foreign policy adviser before Kissinger, but only after their deaths.

The secretary was Thomas Jefferson, who was put on the couch by Fawn Brodie in her recent "Intimate Biography" of Jefferson's erotic life and his emotional hangups. The other was Col. Edward Wilson, who was President Woodrow Wilson's Henry Kissinger at the Versailles Peace Conference, and whose relationship with Wilson was described in the first and still the greatest of the psychohistorical studies, written almost two decades ago—Alexander and Juliette George's "Woodrow Wilson and Colonel House."

Now comes a very different kind of book — "Kissinger on the Couch," by Phyllis Schlafly and Rear Adm. (Ret.) Chester Ward, a selection of the Conservative Club. It is combative, hostile, partisan, but must be added to the mounting literature on the able and theatrical figure who is now secretary of state and who has gained the obsessive attention of the world.

Schlafly and Ward look into the future and they see only betrayal, failure of nerve and the end of American power. They have looked into Kissinger's past for the key to what they call his policy of "unilateral disarmament." "All that is left," they write, "is to answer the question, why did he do it?"

They find the answer not, as some on the extreme right have done, in the fact of Kissinger being a Jew, but something close to it — that he had been a Jew's son in Nazi Germany, had "seen his world destroyed and his father cowed by Hitler's persecution" of the Jews, had become obsessed with "the apocalyptic vision of Auschwitz" and the inevitability of dictators and therefore suffering from a "fear of nuclear war so intense as to paralyze the will."

Certainly there is a case to be made against Kissinger today, mainly because the new economic and energy crisis is a contingency which caught him unaware, and for which his historical, political and diplomatic studies had inadequately prepared him. But the quick-and-easy capsule psychoanalysis by Schlafly and Ward is not only sloppy thinking but comes close to the crude attacks on Kissinger as a Jew.

Andrew Tully

Living Too High On The Hog

WASHINGTON — Fortunately, Sen. Lawton Chiles, D-Fla., is a relative newcomer on Capitol Hill, which is to say he is still relatively unaware that members of Congress are a kind of nobility and therefore automatically entitled to pick the taxpayer's pocket.

Chiles has introduced a bill to eliminate taxpaid junkets overseas by lame-duck legislators, a practice that has cost the public millions of dollars over the past few decades. It is, indeed, not so much a practice as it is a tradition; such junkets are considered a last chance to dip into the public trough.

But Chiles insists on viewing the tradition with cold logic. He says he finds it "hard to imagine what worthwhile purpose is served by so-called 'fact-finding' trips abroad when the members involved won't be around to make use of any facts they should not live in a style which is too far removed from the problems of ordinary citizens."

Money would be saved by both the Chiles and Proxmire bills, Proxmire says his measure would cut government costs by \$13-million a year, and that's not peanuts on Main Street. But it is much more important in these hard times that our VIPs not only set an example of frugality, but alter their life-styles—a little—so they can better comprehend the problems of plain citizens. Force a bureaucrat to drive his own car in rush-hour traffic, or take a bus and he would soon identify with the shoe clerk trying to make it home before his 1968 model breaks down.

The people have become too solicitous of our public servants. We drummer them to the spoiled children, lavishing our tax dollars on their con-

venience and social status. Almost absent-mindedly, we have built up a ruling class insulated from the hard and often cruel facts of our own lives.

Richard Nixon was the most notorious official example of what Vebien called "conspicuous consumption." But too many other government VIPs are living too high on the hog. That is not what the Founding Fathers had in mind when they gave us a Republic.

Andrew Tully

Budget Requests Filed With Board

ANDOVER Donna Holland Correspondent 646-0375 Budget requests submitted to the Board of Finance by other town boards and commissions were: Board of Fire Commissioners, \$5,900; assessor, \$3,390; civil preparedness director, \$250; tax collector, \$2,275; town attorney, \$1,500. Also, treasurer, \$1,690.50; fire marshal, \$497.58; insurance Commission, \$19,700.

Friday Hours Listed For Hot Lunch Plan

BOLTON Donna Holland Correspondent 646-0375 Beginning Friday, all senior citizens in Bolton may participate in a hot lunch program each Friday from 11:15 a.m. until 12:45 p.m.

Seniors are asked to go to the art room at Bolton Elementary School upon arrival at school, then to the cafeteria to get their lunch and then to the art room to enjoy a lunch at their leisure. Seniors are asked to note the new time. They may be served lunch anytime between 11:15 a.m. and 12:45 p.m. The first hot lunch for seniors was served March 7. Eighteen seniors participated.

Friday Hours Listed For Hot Lunch Plan

BOLTON Donna Holland Correspondent 646-0375 Beginning Friday, all senior citizens in Bolton may participate in a hot lunch program each Friday from 11:15 a.m. until 12:45 p.m.

Seniors are asked to go to the art room at Bolton Elementary School upon arrival at school, then to the cafeteria to get their lunch and then to the art room to enjoy a lunch at their leisure. Seniors are asked to note the new time. They may be served lunch anytime between 11:15 a.m. and 12:45 p.m. The first hot lunch for seniors was served March 7. Eighteen seniors participated.

Appropriations The Board of Finance approved appropriations in the amount of \$18,895 at a meeting Tuesday. All appropriations must be approved by townpeople at a Town Meeting not yet scheduled.

The finance board approved appropriating \$4,400 from the reserve fund for capital and non-recurring expenditures for a tractor for Herrick Memorial Park.

From the same fund the board approved \$12,995 from the reserve fund in order for the town to meet safety requirements set by the Occupational Safety Health Act (OSHA) of 1974.

In other business, the board approved \$1,700 from cash surplus for the Emergency Employment Act program of which \$1,000 will be for the park and \$700 for the lawn recreation program. The total amount is reimbursable.

The Herald Area Profile

School Budget At \$6.9 Million

SOUTH WINDSOR Judy Kuehnel Correspondent 644-1164 Members of the Board of Tax Review (BTR) Friday will appear in Superior Court at 11:30 a.m. to show cause as to why an injunction blocking assessment appeals hearings should not be issued.

The hearing is a result of a suit by 12 Main St. homeowners, represented by Atty. Patrick Cavanaugh, also from Main St. The homeowners protesting the BTR policy of offering opportunity to appeal assessments before either one BTR member or the entire three-man board. The homeowners contend that the BTR should hold its hearings enmasse, rather than individually as is being offered to protesting property owners.

Last month the BTR decided it would hold strictly one-to-one hearings, in order to accommodate the hundreds of protests it is faced with this month, following the reassessment of all property in South Windsor. However, Town Atty. Tom Dennis has ruled that the BTR must offer the taxpayer the option of either a one-man or three-man hearing.

Dennis also ruled that all decisions pertaining to adjustments in assessments must be made by the entire board and not one member only. Atty. Cavanaugh said the residents will tomorrow seek court action to "find out what our legal rights are."

For the most part officials are reserving comment on the case until it is heard in Hartford County Superior Court before Judge Leo Parker. The 3-man BTR, consisting of Chairman Norman Peterson, Stephen L. Smith and Marshall Lamonezo, was served papers Saturday morning — the first day of assessment hearings. Protestors are being offered the option to have their cases heard separately or enmasse. If they choose to be heard by the three-man committee, their case is rescheduled until it can be given the 20 minutes allotted time the BTR sets aside.

It appears the BTR will not be able to handle the 600 cases and will most likely seek a time extension. If the court rules that strictly three-man hearings must be held, the BTR will definitely spill its hearings beyond March 31.

Based on the estimated value of a mill of \$204,000, the net increase approximates a 2.5-mill increase for 1975-76.

The council sets the mill rate after a review process concerned with the General Government Budget, the Board of Education budget, revenue from state and federal sources, cash surplus and the Grand List.

The appropriated board budget for 1974-75 reflected a gross increase of 7.8 per cent and a net increase of approximately three mills. The gross increase is composed of \$84,908 increased program costs and \$49,681 increased staff costs.

Controversy over the budget has stemmed over the hiring of the assistant superintendent, proposed last month. While no budget cuts occurred during the weekly budget hearings, the GOP's attempt to make an arbitrary cut — and not specify exactly where it would like the budget cut — was seen as a move to appease the residents who protested the hiring.

Dr. Goldman's explanation of the hiring centers around the annual evaluation of all faculty members, as is required by law. He said the work load he and Asst. Supt. William Perry now carry is too demanding to do the thorough evaluation job the state seeks in its new law, and that a new assistant superintendent would be able to devote the time needed to the assignment.

The final gross budget for 1975-76 stands at \$6,953,652, or \$514,589 over last year's \$6,439,063 budget.

With anticipated revenues other than local tax for the 1975-76 totaling \$1,679,876, the net budget for next year will stand at \$5,273,776, over last year's \$4,785,893. The \$487,883 difference represents a 10.2 per cent increase over last year.

The net increase is considered by the Town Council as the amount to be raised by taxes. Based on the estimated value of a mill of \$204,000, the net increase approximates a 2.5-mill increase for 1975-76.

The council sets the mill rate after a review process concerned with the General Government Budget, the Board of Education budget, revenue from state and federal sources, cash surplus and the Grand List.

The appropriated board budget for 1974-75 reflected a gross increase of 7.8 per cent and a net increase of approximately three mills. The gross increase is composed of \$84,908 increased program costs and \$49,681 increased staff costs.

Controversy over the budget has stemmed over the hiring of the assistant superintendent, proposed last month. While no budget cuts occurred during the weekly budget hearings, the GOP's attempt to make an arbitrary cut — and not specify exactly where it would like the budget cut — was seen as a move to appease the residents who protested the hiring.

Dr. Goldman's explanation of the hiring centers around the annual evaluation of all faculty members, as is required by law. He said the work load he and Asst. Supt. William Perry now carry is too demanding to do the thorough evaluation job the state seeks in its new law, and that a new assistant superintendent would be able to devote the time needed to the assignment.

The final gross budget for 1975-76 stands at \$6,953,652, or \$514,589 over last year's \$6,439,063 budget.

Court Hears Tax Appeal Injunction Friday

SOUTH WINDSOR Judy Kuehnel Correspondent 644-1164

Members of the Board of Tax Review (BTR) Friday will appear in Superior Court at 11:30 a.m. to show cause as to why an injunction blocking assessment appeals hearings should not be issued.

The hearing is a result of a suit by 12 Main St. homeowners, represented by Atty. Patrick Cavanaugh, also from Main St. The homeowners protesting the BTR policy of offering opportunity to appeal assessments before either one BTR member or the entire three-man board. The homeowners contend that the BTR should hold its hearings enmasse, rather than individually as is being offered to protesting property owners.

Last month the BTR decided it would hold strictly one-to-one hearings, in order to accommodate the hundreds of protests it is faced with this month, following the reassessment of all property in South Windsor. However, Town Atty. Tom Dennis has ruled that the BTR must offer the taxpayer the option of either a one-man or three-man hearing.

Dennis also ruled that all decisions pertaining to adjustments in assessments must be made by the entire board and not one member only. Atty. Cavanaugh said the residents will tomorrow seek court action to "find out what our legal rights are."



FORBES & WALLACE advertisement featuring the text 'YOU & FORBES' and 'FORBES & WALLACE'. It describes various sundae and ice cream items available at the location. The address is 112 Burnside Avenue, East Hartford, Connecticut. Phone: 529-9598.

13 MARCH 13

COURT CASES

COMMON PLEAS COURT

Rockville
Gary F. Alexander, 22, of Milford, presented in Common Pleas Court 19, Rockville, Tuesday on charges of first-degree robbery and first-degree larceny, was scheduled by Judge Philip Dwyer for a hearing on probable cause on March 19.

Alexander was charged in connection with an armed holdup at Friedrich Jewellers in Rockville on Jan. 17 during which it was reported that \$30,000 worth of diamonds were taken.

Other area cases presented Tuesday and their disposition are as follows: Blaine A. Perkins, 37, 5 River St., Rockville, operating an un-registered motor vehicle, \$25 bond forfeited; Peter T. Mackin, 31, 229 Vernon Ave., Rockville, following too closely changed from reckless driving, \$20 fine.

Charges were nolle in the following cases: Allen Moquin, 22, Upper Butcher Rd., Rockville, failure to stop for emergency vehicle; Peter Ignatowicz, 25, 35 Allen Dr., Rockville, third-degree criminal mischief; Vincent A. Orlovski, 63, 88 Prospect St., Rockville, disorderly conduct; Mark S. Simon, 40, Ward St., Rockville, disorderly conduct; Gary Weber, 20, 68 Davis Ave., fourth-degree larceny.

Robert Frazier, 24, of Edgemere Rd., Coventry, pleaded innocent to a charge of delivery of liquor to a minor and his case was continued for trial by court on March 19; Charles P. Ladany, 25, of Windsor, pleaded innocent to a charge of interfering with a police officer and was scheduled for trial by jury in April.

INVITATION TO BID

Sealed bids will be received in the Office of The Director of General Services, 41 Center Street, Manchester, Connecticut until March 27, 1975 at 11:00 a.m. for the following: **GLOBE HOLLOW CONCESSION STAND.**

Bid forms, plans and specifications are available at the General Services Office, 41 Center Street, Manchester, Connecticut.

LEGAL NOTICE

TOWN OF ANDOVER ZONING BOARD OF APPEALS
The Zoning Board of Appeals of the Town of Andover, Conn. will hold a public hearing on Wednesday, March 19, 1975 at the Town Office Building at 8:00 P.M. to hear the following appeal asking relief from the zoning laws of the Town of Andover.

Ernest Reed of 78 West St., Bolton, Conn. for variance to allow him to excavate within 50 feet of or up to adjoining property line at property owned by Mr. Reed located on Long Hill Rd. At this hearing interested persons may appear and be heard and written communications received. Said appeals are on file and may be seen in the office of the Town Clerk.

Dated this 12th day of March 1975.
Zoning Board of Appeals
Andover, Conn.
Eric Sismets,
Chairman
Stephen F. Willard,
Secretary



Finast SUPERMARKETS

Yarn Sale!
4 oz 4 ply Skein **77¢**
Machine Washable & Dryer Safe

Pyrex Bakeware
1-qt Casserole with Cover
8-inch Square Bake Dish
2-qt Rectangular Bake Dish
2-qt Loaf Dish
1.59 to 1.99 Values **1.19** ea

Paas Egg Dye 1/2 qt kit **69¢**
Shoe Polish 2 1/2 oz bot **39¢**
Roaster Pans Enamel with Cover **99¢**
Roaster Pan Enamel with Cover **2.99**
CLEARANCE SALE!
Make It & Bake It **79¢**
Nerf Footballs **1.29**
Nerf Mobiles **1.49**
Walt Disney Puzzle Plaques **99¢**

Eveready Batteries
D&C Cell Regular Price 69¢ **37¢**
pkgs 2

Above items available Manchester store only

EXTRA BONUS FROM FINAST
Clip These Valuable Coupons!

Tetley Tea Bags
pkg 100 **\$1**
Valid thru March 15 H-945

BIG DOLLAR DAY



Golden Grain Macaroni & Cheese
Quick & Easy
4 7 1/2 oz pkgs **\$1**

Franco American Spaghetti
Quick & Easy
5 15 oz cans **\$1**

Campbells Pork & Beans
Stock-up & Save
4 16 oz cans **\$1**

Finast Sugar
Granulated 5 lb. Bag **\$2.25**

Finast Flour
All Purpose 5 lb. Bag **69¢**

Salad Oil
Finast 48 oz. Bottle **\$1.99**

Rib Roasts
Beef-Extra Trim

Large End Bone In 6 to 8 Ribs **1.18** lb

Small End 9 to 12 Ribs **1.48** lb

Beef Loin Sirloin Steaks Bone In **1.49** lb

Porterhouse or T-Bone Steak Tail-less 1.89 lb **1.79** lb

Boneless Club Steaks Rib Eye **2.48** lb

Shoulder Steak Beef Chuck **1.38** lb

Beef Rib Steaks Extra Trim Large End 6 to 8 Ribs Bone In **1.28** lb

Young Tender Veal Sale!

Shoulder Chops **1.49** lb

Rib Veal Chops **1.79** lb

Loin Veal Chops **1.99** lb

Veal Cutlets Sliced Thin From Leg **2.59** lb

California Squid 3 lb box **39¢**

Fresh Oysters Standard 8 oz can **1.19**

Ocean Perch Fillet **79¢** lb

Halibut Steaks Center Cut **1.59** lb

Stuffed Clams Heat n Serve Large or Small 11 oz pkg **89¢**

Seafood Favorites!
Haddock Fillet Skinless Fresh Frozen **99¢** lb

Large Eggs Finast Fresh Grade A **59¢** doz
With This Coupon & purchase of \$5 or more Limit one Valid thru March 15 H-982

Finast Butter Quarters 1 lb pkg **69¢**
With This Coupon & purchase of \$5 or more Limit one Valid thru March 15 H-983

SALE AT FINAST!



Miramonte Sliced Peaches
Stock-up & Save
2 29 oz cans **\$1**

Vanity Fair Bathroom Tissue
Regal Print
6 roll pkg **\$1**

Fresh Crisp Finast Saltines
For Snacks or Lunch
2 1 lb pkgs **\$1**

Canned Soda 6 Finast 12-oz cans **89¢**

Mayonnaise Hellman's 1 Qt. Jar **\$1.33**

Bumble Bee Tuna Solid, White in Oil 7 oz. can **69¢**

Corned Beef
Brisket-Boneless Cryovac

Point Cut **89¢** lb

Flat Cut 1.09 lb

Turkey Breasts Delicious, Tender, Moist, White Meat **79¢** lb

Filet Mignon Whole Beef Tenderloin, all Boneless Steaks **\$1.98** lb.

Weaver Dutch Entrees!

Chicken Turnovers 1 lb pkg **1.49**

Chicken Croquettes 1 1/2 lb pkg **1.99**

Chicken Au Gratin 2 lb pkg **2.09**

Chicken Pie 2 lb pkg **2.09**

Sliced Bacon Schickhaus 1 lb **1.39**

Bogner Franks 1 lb pkg **1.19**

Bogner Kielbasa 12 oz pkg **1.09**

Bogner Knockwurst 12 oz pkg **1.09**

Bogner Kielbasa Cryovac 1 lb **1.29**

Mr. Deli Favorites!
Boiled Ham Freshly Sliced to Order Domestic **1.79** lb

White Meat Chicken Roll **1.29** lb

Kahns Liverwurst A/C **79¢** lb

Mr. Deli Bologna **1.19** lb

Polish Kielbasa Hillshire Farms **1.29** lb

American Cheese White or Yellow **1.19** lb



Finast SUPERMARKETS

Frozen Food Favorites!



Freezer Queen Mini Meals
All Varieties 3 pkgs **\$1**

Finast Spinach 6 9 oz pkgs **1.00**

Birds Eye Peas 3 10 oz pkgs **1.00**

Birds Eye Corn 3 10 oz pkgs **1.00**

Dinner Fish Cake 3 8 oz pkgs **1.00**

Orange Juice 4 cans **89¢**

Anacin Tablets For Relief of Pain **1.29** 100

Old Spice Deodorant 2 1/2 oz **1.00**

Kaopectate Anti-Diarrheal 8 oz **1.00**

Selsun Blue Anti-Dandruff Shampoo 4 oz **1.69**

Wipe n' Dip Vaseline Intensive Care pkg 110 **1.39**

100% Pure Orange Juice Finast 3 qt ctns **\$1**

Finast Buttermilk Biscuits 8 8 oz ctns **\$1**

Amer. Cheese Finast Deluxe Slices 12 oz pkg **95¢**

Cream Cheese Kraft Whipped 8 oz ctn **67¢**

Cottage Cheese Finast 1 lb ctn **59¢**

Big Round Top White Bread Baked Fresh the Finast Way! 3 20 oz loaves **\$1**

For Your Favorite Sandwiches

St. Patricks Day Cup Cakes pkg 6 **95¢**

St. Patricks Day Party Square 17 oz pkg **1.09**

HEALING POWERS MINERAL WELLS, Tex. (UPD)
Mineral Wells was so named by its founders who claimed the many lakes and streams around the city possessed healing powers. It is still principally a health and vacation resort area.

Board Seeks \$3.2 Million For Schools

TOLLAND
Vivian Keneson
Correspondent
875-4704

The Board of Education Wednesday approved a figure of \$3,214,000 to submit to the Board of Selectmen for its 1975-76 budget. This represents a \$22,366, or 7.38 per cent increase over the present budget.

Although teacher salary negotiations have not been completed, the board is using a 6.8 per cent increase for all salaries, including administration, teachers, and other employees as a basis for the final figure.

The projected budget was derived by taking the 1974-75 budget of \$3,010,446, adding \$149,897 for salary increases, \$38,389 for non-salary increases due to inflationary cost rises, deducting \$18,787 from the present budget for non-recurring expenses, and \$25,000 which the board had cut last week.

Dr. Kenneth MacKenzie, superintendent of schools, said the proposed budget represents a minimum. If it is reduced further it will mean cutting of personnel and supplies as there is no way the schools can get by on less materials and supplies than last year, he said.

School board chairman Robert Dean assigned different areas of the budget for members to become especially knowledgeable about: Roger Gallic, personnel and salaries; Barbara Kalas, central office; Carol Butterworth, special education; Tony Tantillo, Tolland High School; Carol Duncan and Carolyn Kolwicz, Tolland Middle School; Charles Mayer, Hicks School; Ellen Sorracchi, Parker School.

Public hearings for both the education and general budgets are expected to be set by the selectmen for the first or second week of April.

The latest enrollment figures are 671 at Parker, 491 at Hicks, 522 at Tolland Middle, and 887 at the high school. Special education and students attending technical schools bring the total enrollment to 2,340.

Dean's List Set at SCSC

The dean's list students have been announced by Southern Connecticut State College for the fall semester. The list is composed of students who ranked in the top 20 per cent of the class.

The following Manchester-area students were named:

- Andover: Sarah Richards, Lane Rd.
- Bolton: Evelyn A. Assard, 45 French Rd.
- Columbia: Gina Maria Lesca, Whitney Rd.
- Ellington: Joanne Bukowski, 70 Cider Mill Rd.
- Helltown: Cheryl J. Lyman, Wall St.
- Manchester: Kathleen Craportia, 73 Colony Rd.; Mary Farnham, 4 Harvard Rd.; Sara Giza, 123 Helaine Rd.; Anna Graczyk, 421 Spring St.; Mary Graczyk, 421 Spring St.; Maurine Harvey, 96 Dartmouth Rd.; Kim Hovey, 85, 101, 103, 105, Ann Kozak, 32 Willard Rd.; Bernadette Leary, 26 Bolton St.; Marianne Melin, 20 Arcadia Dr.; Charlene Rathbun, 35 Clarkswater St.; Diane Sienkowski, 59 Summer St.; David Stenstrom, 48 Kennedy Rd.; John Butler, 317 Spring St.; Leslie Vaughan, 228 Ludlow Rd.; Brian Wilson, 100 Portsmouth Lane.
- Rockville: Jeffrey D. Coella, Mt. Spring Rd., RD 1; Amy Fletcher, 51 Tolland Ave.; Edward T. Wendon, 54 Village St.; Paula White, 94 Gerard Dr.
- South Windsor: Michele Craportia, 73 Colony Rd.; Patricia D'Amico, 8 Locust St.; Patricia Farnham, 481 Graham Rd.; Patricia Foster, 80 Foster St.; Jacqueline Jones, 78 Denning St.; Jeffrey Jones, 78 Denning St.; Joseph Jones, 123 Graham Rd.; Debra Singer, 110 Northview Dr.
- Tolland: Roseann Kaimor, Bald Hill Rd.
- Vernon: Patti Lacey, 679 Hartford Tpk.; Sherry Lacey, 679 Hartford Tpk.; Lori Lewis, 48 Sunnyside Dr.

1
3
M
A
R

1
3

FROM YOUR NEIGHBOR'S KITCHEN

By VIVIAN FERGUSON

Mary LeDuc opened the door of her apartment on Homestead St. The aroma of baked goods filled the air. She had just taken a batch of Indonesian stuffed date fritters from the oven. A few minutes later, she had whipped up coconut biscuits and popped them in to bake. Following all this, she made Java pudding.

Last year, Mary became chairman of the foreign relations program for the American Legion Auxiliary in Manchester. This project is sponsored by CARE to help children in underdeveloped countries. Mary does a comprehensive study of the culture, customs and food of the country chosen for the year. At a program to be presented at the Legion on March 17, she will present a lecture based on her research and will serve the desserts, the recipes for which are given below. Mary took first prize on the state level for her travel essay last year on South Korea.



Mrs. LeDuc displays Indonesian artifacts from the Lutz Junior Museum. (Herald photo by Pinto)

The country of Indonesia is composed of thousands of islands. Of these islands, 992 are inhabited. The largest and the most familiar to us are Sumatra, Java, the Celebes and the southern part of Borneo, Indonesia, formerly the Netherlands East Indies, is about 25 percent of the size of the continental United States.

Each area of Indonesia has its own special foods and seasonings. Central Java, for example, includes a brown sugar made from palm in many main dishes. As a contrast to the sweetness, pickled bird eye chilies are popular. The people of Central Sumatra, by contrast, almost never use the chilies and they wouldn't think of adding sugar to meat dishes or to an absorbent paper. These can be made in advance. Serve with coffee.

Indonesian Fritter Batter (Adonan kulit pengoreng)
4 ounces flour
1/2 cup sugar
1 egg white
5 fluid ounces lukewarm water
Place flour and salt in a basin. Make a well in the middle. Add water, a little at a time and, with the back of a wooden spoon, stir in flour gradually. Beat into a smooth batter. Lightly fold in stiffly beaten egg white just before using. Note: This batter is ideal for all fruit fritters, such as pineapple, dates, prunes, etc.

Indonesian Coconut Biscuits (Cookies) (Kue Klapa)
4 ounces butter
1/2 cup sugar
2 eggs
1 cup self-rising flour
1/2 lb. desiccated coconut
1 teaspoon vanilla essence or extract

Cream butter and sugar. Add eggs one at a time and beat until light. Then, fold in flour. Add desiccated coconut and vanilla and stir well. Drop small teaspoonfuls on greased cookie sheet, allowing room to spread. Bake at 350 for 10-15 minutes. Note: Desiccated coconut is merely dried coconut. It can be purchased in plastic bags in this area.

Job MENUS

Java Pudding (Puding Djawa)
8 ounces brown sugar
5 fluid ounces hot water
3 eggs, beaten
12 ounces flour
4 teaspoons instant coffee powder
1/2 teaspoon baking powder
6 ounces butter
6 ounces evaporated milk mixed with 1/2 cup water, or 2 cups fresh milk

School Cafeteria menus which will be served in Manchester Public Schools, March 17-21, are as follows:

Monday: Baked meat loaf, parried Irish potatoes, buttered green beans, bread, butter, milk, lime whip.

Tuesday: Barbecued pork on a roll, molded apple salad, milk, mixed fruit.

Wednesday: Hamburg patty on a roll, potato chips, buttered peas and carrots, milk, pears.

Thursday: Sliced turkey with gravy, cranberry sauce, mashed potato or candied sweet potato, whole kernel corn, bread, butter, milk, ice cream.

Friday: Orange juice, tuna noodle casserole, vegetable sticks, roll, butter, milk, gingerbread with topping.

PARK HILL-JOYCE FLOWER SHOP

WEEKEND SPECIAL
FRESH CUT
DAFFODILS
\$2.69 bunch
(Cash and Carry)

Flowers and arrangements for every occasion...
36 OAK ST., MANCHESTER Tel. 649-0791 or 649-1443
FREE Delivery & Parking • Frank Gakler, Prop.

COUPON OFFER

WITH THIS COUPON
\$1.00 OFF
1 LB. PACKAGE
CARNATION SHRIMP

REDEEM AT HIGHLAND PARK MARKET
LIMIT ONE COUPON PER FAMILY
Good thru Saturday, March 15th

HIGHLAND PARK

317 Highland Street, Manchester
"Choicest Meats In Town"

Happy St. Patrick's Day!
Be Ye Irish or
Not, Ye'll Be Saving of
The Green Whenever
You Shop Highland
Park Market!

COUPON OFFER

WITH THIS COUPON
40¢ OFF
1/2 Gallon, All Flavors, Broyer's Natural
ICE CREAM

REDEEM AT HIGHLAND PARK MARKET
LIMIT ONE PER FAMILY
Good thru Saturday, March 15th

U.S.D.A. CHOICE MEATS!

All Meats Are Freshly Cut; They're Never Pre-Packaged!

LEAN CENTER CUT PORK CHOPS \$1.29 lb.	'COUNTRY STYLE' PORK RIBS 99¢ lb.	LOIN END PORK ROAST 99¢ lb.	LOIN HALF PORK ROAST \$1.09 lb.
CORNER BEEF 89¢ lb. Head Cut	LEAN, WHOLE PORK LOINS \$1.09 lb.	RIB END PORK ROAST 79¢ lb.	RIB HALF PORK ROAST 99¢ lb.

Grocery Specials

get to know us...
WE CAN HELP YOU SAVE ON YOUR FOOD BILL!

SWEET LIFE APPLE JUICEqt. bottles	3 for \$1.00
DUNCAN HINES BROWNIE MIX23 oz.	99¢
CHEF BOY-AR-DEE BEEF RAVIOLI15 oz.	2 for 79¢
SAW FANCY BLUEBACK SALMON7 1/2 oz.	\$1.09
SWEET LIFE MAYONNAISEqt.	\$1.19
DAILY'S KOSHER DILL PICKLESqt.	59¢

GARDEN FRESH produce

SPRING TIME FRESH ASPARAGUSlb.	69¢
CALIFORNIA CRISP LETTUCElb.	29¢
WESTERN TENDER CARROTSlb.	2 for 39¢
WASHINGTON STATE ANJOU PEARSlb.	10 for 69¢

Frozen Food & Dairy Specials

BORDEN'S 100% PURE ORANGE JUICE1/2 gal.	59¢
EGGO WAFFLES11 oz.	49¢
RHODES WHITE BREAD DOUGH5 1-lb. loaves	\$1.49
PEPPERIDGE FARM, ASST. FLAVORS TURNOVERS12 1/2-oz. pkg.	67¢
BIRDSEYE BROCCOLI10-oz. pkg.	2 for 65¢
BIRDSEYE CUT CORN10-oz. pkg.	2 for 59¢

STORE HOURS:

Mon. & Tues. 'til 6:00
Wed., Thurs & Fri. 'til 9:00
Sat. & Sun. 'til 6:00

The Above Specials Are Good Thru Saturday, March 15th.

Special on PAMPER TODDLERS (12 count)

\$1.19

Super Special on CASE OF 15 PAMPER TODDLERS **\$17.35** Save \$5.00!



A Honeymoon Or A Re-Run?

By Abigail Van Buren
© 1975 by Chicago Tribune & News Synd. Inc.

DEAR ABBY: Our daughter, very much against the wishes of her mother and us, moved out of our home to live with a boy she'd been going with for about a year.

After living together for two years, which they did openly, they decided to get married. New this daughter wants me to foot the bill for a big church wedding in June. She wants a long white gown, veil, bridesmaids, flowers and a catered dinner and reception for 300, complete with orchestra.

Not only that, but she told her grandparents that in case they wanted any ideas on what to give her for a wedding present, a Hawaiian honeymoon would really be great.

My question: Do you think the kind of wedding our daughter wants is in order under the circumstances? And what are your thoughts on a Hawaiian honeymoon?

FATHER OF THE BRIDE

DEAR FATHER: After a couple has been living together openly for two years, a wedding such as your daughter is planning is, I think, in poor taste. Also, a Hawaiian vacation would be lovely, but it could hardly be called a "honeymoon." It would be more like a summer recess.

DEAR ABBY: Our widowed mother, age 52, informed her children, much to our surprise, that she had been dating a man for the last three weeks.

The following week, she called and said she wanted us kids to meet this man because she was thinking about marrying him.

Well, we met him, and he seemed very polite and friendly. He told Mother that he was an undercover F.B.I. agent. My brother was very skeptical, so he asked his wife's cousin, who is on the police force, to run a check on this man. The report came back that this man was not connected with any law enforcement agency.

My brother and I got together and decided that we should tell our mother what we found out, but before we had a chance to tell her, she ups and marries this character.

Our question: Should we tell Mom? Or is it none of our business now that she's married to him?

LOUSED UP IN LONGVIEW

DEAR LOUSED: You're right. It's none of your business. She may be very happy with this man. If she isn't, and asks you for help, then you can become involved. But for now, the word from here is—cool it.

DEAR ABBY: What is your opinion of a non-Jewish person who all of a sudden starts wearing a Star of David? She went to Catholic schools all her life and couldn't possibly believe in the Jewish faith.

JUST ASKING

DEAR JUST: I would assume that she believes in someone who believes in the Jewish faith, and she doesn't care who knows it.

CONFIDENTIAL TO VIRGO: When a man tells the woman who has been dating him exclusively for two years that he thinks they should both start dating others, it's the beginning of the end. Say farewell to your Pines. There are other fish in the sea.

Everyone has a problem. What's yours? For a personal reply, write to ABBY: Box No. 69700, L.A., Calif. 90069. Enclose stamped, self-addressed envelope, please. Knowlton, send \$1 to Abigail Van Buren, 132 Lasky Dr., Beverly Hills, Calif. 90212. Please enclose a long, self-addressed, stamped (24¢) envelope.

ABOUT TOWN

A setback game will be played Friday at 7:30 p.m. in Cronin Hall of Mayfair Gardens. All residents of Mayfair are invited.

St. Stephen's Prayer Group of St. Mary's Episcopal Church will meet tonight at 8 at the church.

A Lenten Seminar will be conducted tonight at 7:30 in the Federation Room of Center Congregational Church.

The prudential board of Center Congregational Church will meet tonight at 7:30 in the church office.

Levine & Levine Co., Inc.

Lebanon Ave. 537-2373

Colchester, Conn.

Disney Films To Be Shown At Library

The Mary Cheney Library, Junior Room will present a program of Walt Disney films Sunday at 3 p.m.

The films to be shown are "Water Birds," one of the Nature Classics series and "Varda," the Peregrine Falcon, a live-action feature.

The program is about one-hour long and is planned for children at least six years of age and older.

Levine & Levine Co., Inc.

FACTORY OUTLET FINAL WINTER CLEARANCE

SAVE UP TO 50%

COATS SPORTWEAR PANT SUITS MANY FAMOUS BRANDS MISSES & WOMEN SIZES

Store Hours: Mon.-Fri. 9-4:30 Also Open Sunday 9-4:30

Join The Crowd and Save! AMPLE FREE PARKING AVAILABLE

COLLEGE NOTES

Miss Karen-Marie Cronin, daughter of Mr. and Mrs. John J. Cronin of E. Middle Tpka., will participate in Bay Path Junior College's annual Bermuda trip during spring vacation, March 22-26. Sixty-three students accompanied by the dean of the college, will stay at the Elbow Beach Surf Club for College Week activities.

A member of the Class of 1976, Miss Cronin is enrolled in Bay Path's Executive Secretarial Program leading to an associate in science degree.

Judith A. Pendergast of 81 Benton St. is appearing in Cole Porter's musical comedy "Anything Goes," which is being presented by Dean Junior College, Franklin, Mass. She is a senior majoring in theater at Dean where she has appeared in several other productions.

The officers will be installed April 10 in ceremonies at the Ellis Home. Mrs. Marion Zwart of Stamford, past supreme president, will be the installing officer. She will be assisted by Mrs. Helen Walker, also of Stamford, acting as supreme installing marshal.

Other elected officers are Mrs. Mary Moir, vice president; Mrs. Edward Bayles, financial secretary; Mrs. David Lyon, treasurer; Mrs. John Carson, recording secretary; Mrs. Anthony Berube, chairman of trustees; Mrs. Dominic Frasca, second trustee; and Mrs. John O'Leary, third trustee.

Also, Mrs. Kenneth Hodge, first assistant marshal; Mrs. John Zieman, second assistant marshal; Mrs. John Callahan, chaplain; Mrs. Alfred Ritter, press correspondent; Mrs. Francis Mahoney, historian; Mrs. Carol Hawthorne, first guard; and Mrs. Thomas Atman, second guard.

The newly elected president has appointed Mrs. Jean Fahour as corresponding secretary and Mrs. Joseph Reynolds as marshal.

Club Plans U.N. Trip

The Republican Women's Club is planning a trip to the United Nations in New York on April 15.

The trip, which is open to the public, will cost each participant \$8 for the bus, \$2 (optional) for a guided tour of the UN and \$3.50 to \$4.25 (optional) for a meal at the restaurant at the hotel.

The day can be spent as each person wishes to spend her time either with the group or sightseeing on her own.

The bus is limited to 40 people so early reservations are necessary. For reservations and further information contact Ellen Zinsner, 176 Ralph Rd.

CFS Auxiliary Plans Dessert-Fashion Show

Manchester Auxiliary of Child and Family Services of Connecticut will sponsor its annual dessert-fashion show Wednesday at 8 p.m. at Manchester Country Club.

The show, "Spring is 'Wunderful,'" is the major fund-raising event of the year for the local auxiliary to the agency, which aids unwed mothers, places children for adoption and in foster homes, and offers family counseling.

Fashions will be provided by Forbes and Wallace at Manchester Parkade. Anita Merriam, fashion coordinator

IN THE SERVICE

Coast Guard Aviation Structural Mechanic J.C. David K. Seavey, son of Mr. and Mrs. John F. Seavey of 77 Oxford St., has completed a five-week helicopter maintenance course at the Coast Guard Aircraft Repair and Supply Center, Elizabeth City, N.C.

He received advanced training in the operation and maintenance of fuel, oil, hydraulic, electrical and flight control systems. He has returned to duty at Brooklyn, N.Y.

Navy Airman Ret. Donald J. Coulombe, son of Mr. and Mrs. Frank Coulombe of 38 Redwood Rd., reported for duty with Training Squadron 10 at the Naval Air Station, Pensacola, Fla. He joined the Navy in October 1974.

THE BABY IS NAMED

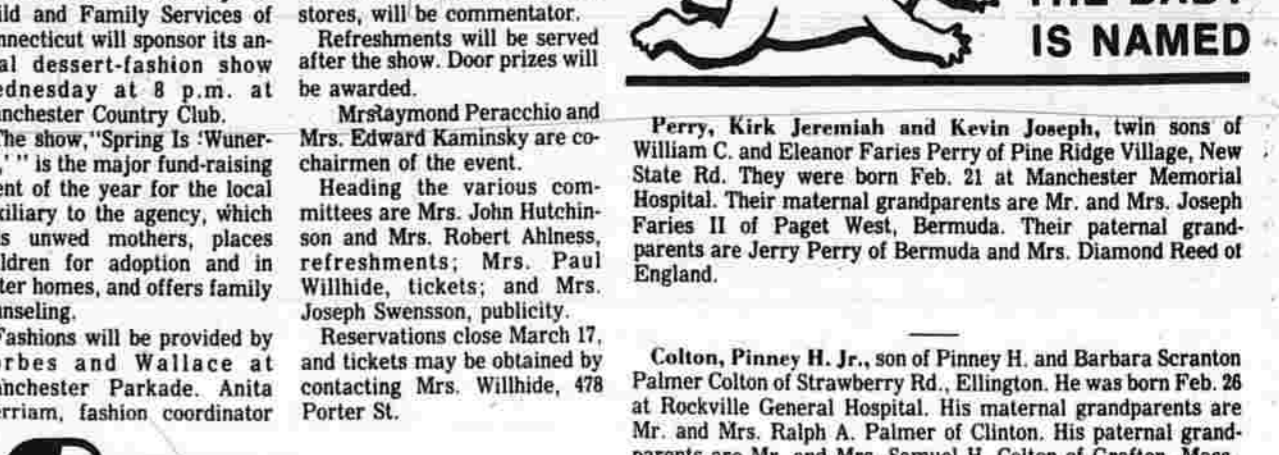
Perry, Kirk Jeremiah and Kevin Joseph, twin sons of William C. and Eleanor Faries Perry of Pine Ridge Village, New State Rd. They were born Feb. 21 at Manchester Memorial Hospital. Their maternal grandparents are Mr. and Mrs. Joseph Faries II of Paget West, Bermuda. Their paternal grandparents are Jerry Perry of Bermuda and Mrs. Diamond Reed of England.

Colton, Pinney H. Jr., son of Pinney H. and Barbara Scranton Palmer Colton of Strawberry Rd., Ellington. He was born Feb. 28 at Rockville General Hospital. His maternal grandparents are Mr. and Mrs. Ralph A. Palmer of Clanton. His paternal grandparents are Mr. and Mrs. Samuel H. Colton of Grafton, Mass.

Burdick, Brian Paul, son of Michael D. and Kristine Jacobucci Burdick of 51 Park West Dr., Rockville. He was born Feb. 28 at Manchester Memorial Hospital. His maternal grandparents are Mr. and Mrs. Michele Jacobucci of 4 Hayes Dr., Vernon. His paternal grandparents are Mr. and Mrs. Everett Murphy of Vernon. He has a brother, Michael David Jr., 2.

Marsh, Amy Lynn, daughter of William and Rosemary Brown Marsh of New Haven, formerly of Manchester. She was born Feb. 14 at Yale-New Haven Hospital. Her maternal grandparents are Mr. and Mrs. Robert L. Brown of Manchester. Her paternal grandparents are Mr. and Mrs. William C. Marsh of Manchester. Her maternal great-grandmother is Mrs. Grace V. Brown of LaPuente, Calif. Her paternal great-grandparents are Mrs. Lea Coderre of Springfield, Mass., an C. W. Marsh of Westfield, Mass. She has three brothers, Gregg Allen, 9, Scott Adam, 5, and Kevin Andrew, 6 1/2.

Smooth your nest with our wrinkle-free home improvement loans.



Fix it up, spread it out, make it prettier, turn it into a vacation paradise. Your friendly financial eagle knows how to make a home that people look up to. You can do it, too. With a First Federal Home Improvement Loan. And our rates won't send you up a tree.

Come in today, to any office of First Federal and ask about a home improvement loan.

Monthly Payment Chart

Amount Borrowed	3 years	4 years	5 years
\$1,000	\$31.79	\$24.88	\$20.75
1,500	47.69	37.32	31.13
2,000	63.59	49.77	41.51
3,000	95.39	74.65	62.27

Annual percentage rate 9%. Amounts of up to \$10,000 for a maximum period of 10 years.

First Federal Savings

Tel: 289-6401

East Hartford, Glastonbury, Manchester, Rockville, Vernon and South Windsor

Region 8 \$85,620 Budget Requested For Superintendency

Anne Dallaire
Correspondent
228-3267



In a 6 to 1 vote, the Central Office Committee this week approved the Central Office 1975-76 budget of \$85,620.

The Central Office Committee (COC) is composed of two members from each board of the four Boards of Education in Regional District 8.

The levy will be placed on each of the Boards of Education of Hebron, Marlborough, and Andover, and on the Rham High School Board of Education.

Prior to the vote Andrew Mulligan, president of the Hebron Taxpayers Association, (HTA) presented copies of the association's proposed 1975-76 budget for the Central Office.

Mulligan told COC members that the major areas of concern are the elimination of assistant superintendent and replace him with a business manager, machine maintenance, the area of legal fees, the "excessive" mileage, the tax fee raise in gas mileage of 12 cents to 15 cents per mile, and the increase of salaries.

Mrs. Betty Kowalski COC member representing the Andover Board of Education, questioned Mulligan in his role of a business manager instead of an assistant superintendent.

Mulligan replied that a business manager could spend his time in the business part of the Central Office and that would leave more time for the superintendent to devote to education.

Dr. David Cattanach, superintendent of schools, told Mulligan he felt his assistant superintendent was excellent in personnel, special education, and title programs and he needed someone working with him in the district. The office can not be run by one person, he said.

Howard Porter, member of the Hebron Board of Finance speaking as a taxpayer, told the COC members that he felt and the board felt there should be a 5 per cent decrease instead of a 5 per cent increase.

Porter went on to say "There is absolutely no reason to increase the Central Office budget, and they should have town meetings on this budget, and not just a levy put on that the public has no opportunity to vote on the budget, it's unfortunate."

Charles Barrasso, COC representative of the Hebron Board of Education, voted no on the budget, saying he would not go along with the budget, due to the raise in salary unless you drop the mileage completely.

"It's a thorn in everyone's side," Barrasso commented. "In other business Dr. Cattanach asked the COC members if it was acceptable to get a total combined bid from the milk dairies for all four districts, the COC members agreed to discuss it with their respective boards."

In other business Dr. Cattanach asked the COC members if it was acceptable to get a total combined bid from the milk dairies for all four districts, the COC members agreed to discuss it with their respective boards."

Howard Porter, member of the Hebron Board of Finance

Donna Holland
Correspondent
646-0377

About 25 residents, many of whom were members of town boards, attended a public hearing this week to hear budget requests presented to the Board of Finance by town boards.

The two budgets questioned more than any others were those submitted by the Board of Selectmen and Columbia-Hebron-Andover Community Health Service, Inc. (CHACHSI).

The Board of Selectmen's request included a 100 per cent raise in salary for the board's three members, the first selectman from \$3,300 to \$6,600 and the selectmen from \$150 to \$300.

John Yeomans, chairman of the finance board, said he saw how the increase could be implemented in the 1974-1975 budget.

Residents who spoke, including David Yeomans, first selectman, spoke in favor of the increase so as not to limit the persons holding the position to those of independent means.

This year, for the first time, Yeomans showed the amount of cash needed to operate the disposal area as well as the total cost of operating the disposal area. The total amount is \$40,858.41 and the cash amount is \$24,488.88. Yeomans said the requested amounts could be quickly and easily changed if residents at a scheduled March 27 town meeting vote to change the method of operation.

Bolton's share of the total is \$25,740.80.

The selectmen are requesting a roof on the building next to the town garage, \$300; roller shutters for land volumes vault, \$287; an 11-foot snow plow, \$1,400; an asphalt paver, second hand, \$1,500; conference table for Town Office Building, \$200 and a radio for the dump truck, \$975.

Pete Maneggia, a town employee, said he thought maybe all the items should be considered but consideration should also be given to putting off their purchase or replacement for a year.

The total amount requested by the Board of Selectmen is: salaries and expenses, \$7,600; courts, \$200; elections, \$720;

Radio Shack® 2000th STORE OPENING COAST-TO-COAST SALE!

LIMITED QUANTITIES
SOME ITEMS

2000th STORE OPENING
COAST-TO-COAST
SALE!

Company-Owned Only! USA Only!

LOWEST PRICE EVER

Reg. 89.95
59.95

CHARGE IT
At Radio Shack

PRICE SLASHED 33%
REALISTIC®
DELUXE
CASSETTE
RECORDER

- Battery Or AC Operation! Pushbutton!
- Built-In Condenser Mike!
- Tape Counter! Auto Shut-Off!

Big savings on the Realistic CTR-30 while they last! Total automatic end-of-cassette shut-off. Equal for off-the-air recording, output for optional external speaker! Battery/record level meter. Digital counter. Separate tone and volume controls. With earphone, carry case. AC cord. Batteries extra if desired.

SAVE \$100

AMAZING HI-FI BARGAIN

OUR BEST 8-TRACK RECORDER
AM-FM STEREO SYSTEM Reg. 239.95

Roll back inflation as you enjoy our 3-piece Modulare-8 recorder/receiver/player at spectacular savings! Play pre-recorded tapes or record your own for system or car use! Tune AM or FM stereo. Glide-Pair™ bass, treble, balance, volume, record level controls. Pause control for easy cueing. Mike, phone, aux. Stereo center is a sleek 4" x 22" x 10". Two compact air-suspension speakers, 10" x 9 x 5 1/2". All in luxurious walnut finish cabinet. There's only one place you can find it... Radio Shack.

Reg. 239.95
139.95

SAVE \$150

INCREDIBLE AUDIO BARGAIN

HUGE PRICE SLASH ON REALISTIC®
AM-FM STEREO & 4-CHANNEL RECEIVERS
Our Famous QTA 750 Series

Reg. 299.95
149.95

Reg. 339.95
189.95

NOT ALL MODELS IN ALL STORES

RADIO SHACK POLICY ON ADVERTISED ITEMS

During the normal or stated life of this ad, we intend to have every item in every Company-operated store unless a limitation is stated. If a shipping delay results in an out-of-stock, these stores will issue a Rain Check on request. If item was cancelled or sold out, they will offer similar savings on another similar item available in that store at that time. Dealer/Franchise stores determine their own policy. We appreciate your business and understanding.

SAVE \$20

SUBTRACT INFLATION WITH THIS RADIO SHACK® 10-DIGIT DESK CALCULATOR

Reg. 79.95
59.95

AMAZING LOW PRICE

Versatile EC-2000 is ideal problem solver for home or office! Does basic math functions, chain and mixed calculations. Constant mode divides or multiplies by a fixed number. Full-floating or pre-set decimal. Vivid 10-digit display. Clear entry. For 120 VAC.

SAVE \$30

A MUSIC LOVER'S BARGAIN!
AM-FM HI-FI RECEIVER WITH QUATRAVOX®

Reg. 119.95
89.95

SAVE \$30

EC-400 MEMORY CALCULATOR

Reg. 99.95
69.95

SAVE \$20

EC-425 SLIDE RULE CALCULATOR

Reg. 79.95
59.95

SAVE \$40

REALISTIC® STEREO & 4-CHANNEL AMPLIFIER

Reg. 79.95
39.95

SAVE \$10

REALISTIC SOUND LEVEL METER

Reg. 49.95
39.95

SAVE \$20

DUOFONE® TELEPHONE ANSWERING SYSTEM

Reg. 79.95
59.95

NOTE: Customer-owned equipment connected to telephone company equipment may be subject to local laws.

SAVE \$30

TAPE CHANGER PLAYS 3 B-TRACK TAPES AUTOMATICALLY!

Reg. 99.95
69.95

SAVE \$5

100K OHMS 43-RANGE V.O.M. TESTER

Reg. 44.95
39.95

SAVE \$17.07

REALISTIC AM-FM DIGITAL CLOCK WEATHERADIO*

Reg. 59.95
42.88

SAVE \$100

COMPLETE AM-FM STEREO AND 4-CHANNEL SYSTEM

Reg. 199.95
99.95

SAVE \$10

STEREO PHONO SYSTEM WITH ADD-ON FEATURES!

Reg. 99.95
89.95

SAVE \$10

DWELL TACH TIMING LIGHT

Reg. 39.95
29.95

SAVE \$10

BENCH STYLE P-BOX "DECISION-MAKER" HOBBY KIT

Reg. 49.95
29.95

POPULAR "ANIMAL" RADIOS (ASSORTED STYLES) REDUCED FOR EASY GIVING!

Reg. 10.95
5.88

SPECIAL PURCHASE AUTOMATIC ELECTRONIC ROOM AIR FRESHENER

Reg. 99.95
69.95

DYMO 3/8" LABELMAKER TAPE ASSORTED COLORS!

Reg. 99.95
5 \$1 FOR

\$5 OFF CATALOG PRICE NEW 680 PAGE DICTIONARY OF ELECTRONICS

Reg. 69.95
49.95

The 1975 American Song Festival
IT'S HAPPENING NOW!
DETAILS AT YOUR RADIO SHACK STORE. HEADQUARTERS FOR OFFICIAL COMPETITION TAPE!

RADIO SHACK HASN'T RAISED A PRICE SINCE JULY, 1974 BUT WE'VE LOWERED THEM PLENTY!

MANCHESTER PARKADE
388 Middle Turnpike West

Radio Shack

SALES PRICES MAY VARY AT INDIVIDUAL STORES

BUSINESS



Promoted

Terry M. D'Italia, a former reporter for The Manchester Evening Herald, has been promoted to associate consultant in the communications division of Connecticut Mutual Life Insurance Co. Hartford.

Livesey Home From Junket

Everett J. Livesey, president of Savings Bank of Manchester, has returned from Washington, D.C., where he was one of a group of savings bank executives who met with ranking officials of the administration and members of Congress.

PUBLIC RECORDS

Marriage license: Richard Thurston Clapp, Coventry, and Teresa Rossellen Muldown, 225 Highland St., March 22, St. James Church.

New Money Montevideo (UPI) - Uruguay will revise the face value of its currency July 1, the government announced recently.

Imported Car Ban Wouldn't Help

DETROIT (UPI) - Detroit's automakers say imported cars, despite their growing success, didn't create the domestic car sales slump and banning them from the U.S. market would not cure it.

Still, the consensus is banning imports would hurt more than it would help. U.S. imports generally account for about 15 per cent of sales - a figure analysts say is lowest among industrialized nations with the exception of Japan.

What automakers and lawmakers are worried about, however, is "dumping," a practice banned by treaty in which an automaker will sell cars in other countries cheaper than they are available where they are made.

Number One Styling... Men's Famous Label DENIM JACKETS Fabulous Value!

Reg. 12.99
\$10

Still the top favorite jacket! Authentic western cut. 14 oz. denim, 4 pocket. 136 to 46.

Save \$4 Off Our Regular Low Price

Boys' Doubleknit BLAZER SPORT COATS

Reg. 15.99
11.99

Great solid colors, fully lined. Popular center vent, sizes 8 to 18.

Polyester KNIT SLACKS

Solids Reg. 6.99
5.88

Machine washable solid colors, regulars 8 to 18, slims 8 to 16.

Fancy Plaids & Checks Reg. 7.99
6.37

Famous Label DENIM JEANS

Reg. 8.99
7.47

Blue 10 oz. denim flare jeans with 4 patch pockets. You'll know the famous label! Sizes 29 to 42.

SAVE 33% Off Our Regular Low Prices

Misses & Women's 100% Polyester DAYTIME DRESSES

Reg. 8.99
5.99

A Spring oriented assortment of prints and jacquards, all with matching or contrasting belts. Regular collars or jewel necks, contrasting stitching. Sizes 10-18, 14-12, 24-12.

Save 25% Off Our Regular Low Prices

Short Sleeve KNIT TOPS

Reg. 3.99
2.99

Nylon knit printed T-shirts and V-necks, sizes S, M, L.

Famous Maker JEANS

Reg. 5.99 to 10.99
4.49 8.24

Basic and fashion jeans in navy denim and brown colors. 8 to 16.

Save 25% Off Our Reg. Prices

Long Sleeve CARDIGANS

Reg. 7.99
5.88

Soft acrylic knit cardigans in jacquard and pointelle treatments. S, M, L.

Save Up To 20% Off Our Regular Low Prices

Boys' Long Sleeve WESTERN SHIRTS

Reg. 3.97
3.17

Solid body, gingham yoke. 8-18.

Flannel Lined WARM-UP JACKETS

Reg. 5.99
4.66

Solid colors. 2 pockets. 8-18.

DENIM DUNGAREES

Indigo dyed. Reg. 5.99
4.77

Indigo in 10's. 29-42.

New Spring and Easter Fashion Men's Short Sleeve SPORT and DRESS SHIRTS

Your Choice Reg. 5.99
4.88

Sport Shirts: Bandana, jean and floral print. Sizes small to extra large.

Dress Shirts: Caldor's own brand permanent press shirts in chambray, gingham checks and stripes. 14-17, 17.

Fabulous! MIX and MATCH Separates

Button Front Face T-Shirts: Reg. 5.99 Ea.
4.88 Ea.

Long Sleeve Print Shirts: Reg. 7.99
5.88 Ea.

Belted Pants & Short Sleeve Jackets: Reg. 8.99 Ea.
6.88 Ea.

Tri-acetate or nylon shirts in heavenly colors, poly rib knit jackets, skirts, slacks, all sizes 8-16.

Americans Leading Mfr. PANTY HOSE

Extra sheer, fits smoothly from hip to toe. Reg. 1.19
67c

Famous Nylon Opaque Machine Washable KNEE HI SOCKS

Solids, cables, novelties. 1 size fits 9-11. Reg. 99c
79c

Save Over 20% Off Our Regular Prices

Boys' BASEBALL JACKETS

Reg. 4.67
3.77

Acrylic fleece shell. 4-7.

Machine Washable FLARE JEANS

Reg. 3.99
3.27

Poly-cotton denim or twill. 4-7.

Boys' Machine Washable Short Sleeve KNIT SHIRTS

Reg. 2.99
2.47

Crew neck styles, fancy patterns, sizes 8 to 18.

Save 37% Off Our Reg. Low Prices

Girls' Spring 100% Polyester Novelty SLACK SETS

Reg. 5.99
3.77

Double knit jacquards in delicious pastels. Button front jacket, pull-on pants. Sizes 4 to 6x, 7 to 12.

Save 25% Off Our Reg. Prices

SPRING SLACKS or JEANS

Reg. 2.97
2.17

4 to 6x To 7 to 14 Reg. 3.99
2.97

Easy launder pants with crisp creases.

CALDOR BRAND BOYS' Permanent Press T-SHIRTS & BRIEFS

Reg. 3.29
2.79

Machine wash

Men's & Boys' BASKETBALL SNEAKERS

Reg. 2.97
2.47

Heavy duty uppers, arch support, 11-6 to 12.

Men's & Boys' All Pro SPORT SOCKS

Reg. 99c to 1.49
79c to 1.19

By J. Boys' Sports, Reg. 89c-1.19 - 69c

Save An Additional \$2 Off Our Regular Prices

Girls' 100% Acrylic Spring CAPES

Reg. 6.99
4.99

Button front style in pretty proportions of cable knit, dress or pants. Machine Wash.

Save 34% Off Our Reg. Low Prices

Girls' 100% Nylon S-T-R-E-T-C-H BODY SHIRTS

Reg. 2.99
1.97

Short sleeves, button fronts. Solids or prints. 4 to 14.

Save 25% Off Our Reg. Price

SPRING SLACKS or JEANS

Reg. 2.97
2.17

4 to 6x To 7 to 14 Reg. 3.99
2.97

Easy launder pants with crisp creases.

Latest Spring SCARVES Assorted 299 Group 299 Ea.

Novelty BELTS & Nylon UMBRELLAS

Your Choice Reg. 2.99
2.19

Leather or rope belts. Nylon slims and corded umbrellas.

Save An Additional \$2 Off Our Regular Prices

Girls' 100% Acrylic Spring CAPES

Reg. 6.99
4.99

Button front style in pretty proportions of cable knit, dress or pants. Machine Wash.

Save 37% Off Our Reg. Low Prices

Girls' Spring 100% Polyester Novelty SLACK SETS

Reg. 5.99
3.77

Double knit jacquards in delicious pastels. Button front jacket, pull-on pants. Sizes 4 to 6x, 7 to 12.

Save 25% Off Our Reg. Price

SPRING SLACKS or JEANS

Reg. 2.97
2.17

4 to 6x To 7 to 14 Reg. 3.99
2.97

Easy launder pants with crisp creases.

Save 25% Off Our Reg. Price

SPRING SLACKS or JEANS

Reg. 2.97
2.17

4 to 6x To 7 to 14 Reg. 3.99
2.97

Easy launder pants with crisp creases.

3 WAYS TO CHARGE

MANCHESTER
1145 Tolland Turnpike

SALE: Thursday thru Saturday
Store Hours: 10 a.m. to 9 p.m.



'Hilarious Time' Didn't Mind Rider or Dip Bikini-Clad Jockey Donna Hillman Cools Off in Florida

Pre-Season Choice Hawks Struggling

NEW YORK (UPI) — When the National Hockey League divided its teams up into four divisions for the 1974-75 season, the only sure bet for a first place finish was the Chicago Black Hawks.

Chicago was plotted in front of the pack in the first period and then Pierre Plager and Wayne Merrick took turns setting each other up for what proved to be the game winning goals.

Collins gave St. Louis a 2-0 lead in the first period and then Pierre Plager and Wayne Merrick took turns setting each other up for what proved to be the game winning goals.

Yankee Conference Set To Continue Program

BOSTON (UPI) — Yankee Conference athletic directors want to file a request to the NCAA, which should receive them in late April.

Advertisement for Termites Swarming Bliss, featuring a termite illustration and contact information for Bliss Termite Control Corp.

Indiana's Bobby Knight Tabled Coach-of-Year

NEW YORK (UPI) — Undefeated Indiana carries the stamp of its coach — an unrelenting defense — and Wednesday Bobby Knight was announced as an overwhelming winner of United Press International's Coach-of-the-Year award.

Knight, a noted perfectionist who can be quite loud when his team or the officials come up short of perfection, has guided the Hoosiers to a 29-0 record this season, with an average winning margin of 23.3.

Jack Redmond Helped Prepare U.S.A. Squad

FT. LAUDERDALE, Fla. (UPI) — Third baseman Joe Torre suffered a sprained right ankle Wednesday in a freak accident during the New York Mets' exhibition game with the New York Yankees.

Dave Kingman Homers Decide

FT. LAUDERDALE, Fla. (UPI) — A pair of home runs by Dave Kingman, his third and fourth of the spring, gave Tom Seaver a big edge on Catfish Hunter and the New York Mets.

Rec Volleyball NATIONAL DIVISION Standings

Table showing National Division Standings for Rec Volleyball, listing teams like Watkins, CBT, and Kaden Fuel with their respective records.

World Series Rings Of Jackson Recovered

MESA, Ariz. (UPI) — Police have recovered the three World Series rings stolen from the home of Oakland A's slugger Reggie Jackson.

All-Events Pin Record

DAYTON, Ohio (UPI) — Hall of Famer Joe Norris Wednesday fired his 19th 1,800 or above all-events total in 45 years of competition in American Bowling Congress tournaments.

Whalers, Phoenix To Battle

HARTFORD (UPI) — The New England Whalers may be comfortably in first place in the East Division of the World Hockey Association, but one thing must gall them.

Learning Year for East, Future Prospects Bright

By Len Auster Poor by past standards, East Catholic did make advances on the basketball court during the 1974-75 season.

Kurt Hassett Wins In Ski Club Racing

Emerging as champion of the Manchester Ski Club last Sunday at Okemo Mt. Ludlow, Vt., was 18-year-old Kurt Hassett of Manchester.

Rec Volleyball NATIONAL DIVISION Standings

Table showing National Division Standings for Rec Volleyball, listing teams like Watkins, CBT, and Kaden Fuel with their respective records.

Tennis Tourney Set in Sweden

BOSTON (UPI) — The \$100,000 Commercial Union Masters tennis tournament, held last year in Melbourne, Australia, will take place Dec. 17 in Stockholm, Sweden, it was announced Wednesday.

East Side PeeWee Basketball Champs

Coach Doc Callahan's Celtics captured the East Side Pee Wee Basketball League title this season, Squad members, front row, left to right, David Boeshaw, Jim Redd, Dean Lautenbach, Allen Choiniere, Jim Choiniere, Rear Row, Dave Callahan, Pat Burke, Mike Everett, Roger Greenwood, Jim Sivertson, Standing, Coach Callahan.

Fisk Out Two Months, Ball Breaks Right Arm

NEW YORK (UPI) — Carlton Fisk is back in familiar surroundings today — baseball's disabled list.

Crowd Roars Its Approval, Steve Blass Throws Strike

BRADENTON, Fla. (UPI) — Still struggling mightily to find his way back, and sweating already even though this was only his second pitch, Steve Blass threw a good slider to Don Hahn and the umpire called it a strike.

Trevino Doral Favorite

MIAMI (UPI) — Lee Trevino is the favorite judging by the odds of the last two weeks, but most of the attention will be focused on two blond bombers as first-round play begins today in the \$100,000 Doral Eastern Open golf tournament.

East Side PeeWee Basketball Champs

Coach Doc Callahan's Celtics captured the East Side Pee Wee Basketball League title this season, Squad members, front row, left to right, David Boeshaw, Jim Redd, Dean Lautenbach, Allen Choiniere, Jim Choiniere, Rear Row, Dave Callahan, Pat Burke, Mike Everett, Roger Greenwood, Jim Sivertson, Standing, Coach Callahan.

BOWLING

ELKS - Walt Modzierz 141-141, Joe Desimone 174-394, Bill Adams 153-382, Gene Richardson 146, Al Parkey 192-385, Joe Pagano 138-163-428, Al Atkins 141-372, Dmg Farr 137-392, Reggie Tomlinson 368, Don Carpenter 387, Dick Krol 385, Jack Talley 364, Nick Twery 366, Mike Dunlop 353.

HOME ENGINEERS

Elaire Neckerman 188-478, Gerry Tucker 198-511, Barbara Higley 177-457, Phyllis Allen 460, Alyce McArdle 452, Maryis Dvorak 423, Jenne Leggett 423, Cathy Bohalian 455, Alyce McArdle 452.

HAPPY HOLIDAYS

Val Sally 340, Marti Saries 364, Kathy Hayden 374.

AUTOMOTIVE

Dan Wells 222-510, Lenny DeLaise 560, George Moquin 519, Steve Kershaw 508, Ben Meakin 178-178-516, Nancy Duodec 178-580, Sharlene DeLaise 197-497, Jeanette Stankowski 196-194-520, Sandy Kershaw 196-194-520, Dianne Randall 452.

EASTERN BUSINESSMEN

Alan Gryzb 176-438, Larry Aceto 189-337, Mike Zwick 153-382, Bert Carlson 188-525, Ernie Gakman 193-383, Ed Ralph 138-153-382, Ding Baich 155-406, Mick Johnson 175-371, Sam Little 145-383, Sandy Hanna 136-143-396, Don DeDominicus 142-551, Tony Rinaldi 143-406, Joe Vinko 188-528, Dave Gryzb 158-380, Paul Gilbert 138-388, Ted Kowanz 143-386, Cliff Jones 152-387, Stan Waickowski 138-388, Lou DeLaferra 138-388, Jim Striani 138-381, Howie Peters 373, Vic Salsius 351, Larry Fahney 383, Ed Schworm 367, Dennis Slankewicz 363, Rich Cochetki 382, John Davis 138-389, Hank Michael 137-137-388, Slim Harrison 138-354, Ron Jones 143-406, Ed Bata 135-383, Hatch Hart 137, Pete Scott 140, Rich DeDominicus 152.

TV AND RADIO

7:25 WHA: Whalers vs. Road Runners, WTC 7:30 NBA: Knicks vs. Blazers, WINF

FREE

ONE CAN OF WILSON TENNIS BALLS Supplied by Alpine Haus of Watersfield with LUBE, OIL and FILTER CHANGE BROWN'S TIRE SHOP 333 MAIN ST., MANCHESTER

FREE DRAWING

1st PRIZE TENNIS RACQUET 2nd PRIZE 1 DOZ. TENNIS BALLS

The Herald

Area Profile

Library Construction Is Behind Schedule

BOLTON
Donna Holland
Correspondent
646-0375

Douglas Cheney, chairman of Bolton Public Building Commission, said today construction of the new Bentley Memorial Library is running about a month behind schedule.

Cheney said the main reason for the delay has been the weather. It was originally anticipated the library would be completed in May.

The new library is being built by DMC Construction Inc. of

State Aid Eyed For Ball Field

SOUTH WINDSOR
July Kuehnel

A solution to a request for a lighted softball field may come in the form of a field that would accommodate high school girls and may be funded through a state education grant.

The Town Council at present is surveying existing fields in town with the possibility of converting one into a softball field. However, this does not necessarily mean the council is ready to spring for a lit field yet.

A second option open to the council is a tract of land across from South Windsor High School, where Plum Gutley Park was to have gone if accepted by Vincent Maricovich, M.D., and Alan Hill, M.D., of Stanford University Medical School, California.

Revival Services Planned

VERNON

Special revival services will be conducted at the Vernon Assemblies of God Church, 51 Old Town Rd., starting Friday at 7:30 p.m. and will continue with special services Saturday and Sunday also.

The Saturday service at 7:30 p.m. will have a youth emphasis with the Rev. and Mrs. Ralph D. Bellows of Eastham, Mass. leading the program.

Also sharing in the service will be several Bible college students from Faith School of Theology, Brookline, Maine. During each service special prayers will be said for those who are ill.

Mrs. Bellows will share illustrated Bible stories with the Sunday school students during the Sunday school hour starting at 9:45 a.m.

The Rev. Mr. Bellows will preach at the 11 a.m. and the 7 p.m. services on Sunday.

The Bible college students will remain in Vernon for five days to conduct a house-to-house Sunday School canvass. They will work under the direction of the Rev. Earl Pettibone, pastor of the local church along with the local youth group. The public is invited to attend the weekend services.

Hungry Thieves?

South Windsor Police are looking for one or two small thieves who must have been hungry yesterday.

Janis DePinto of 330 Diane Dr., South Windsor, reported a window was broken in her home, the house was entered and "two freshly baked cookies were taken."

She said she had seen two youngsters in the area earlier.

Chamber Seeks Town Aid To Revitalize City Center

VERNON
Steven Lamont, reporting for the Economic Development Committee of the Rockville Area Chamber of Commerce, Wednesday called on town officials and other residents to assist the committee in its attempt to revitalize the center of Rockville.

Lamont said a survey is being conducted to determine the number of vacant offices and businesses, and when all returns are in the chamber could act as a clearing house in an effort to rent the vacant places.

He said the committee of businessmen is made up of chamber members who are working toward Rockville's revitalization. He said, "It seems we would have a chance if we could get more help, especially from local government."

He said the Vernon Board of Realtors has agreed to cooperate with the committee and urged other board members to speak at civic groups and ask for their support.

John Pazzato, chairman of the board, and A. Bernard Crowl, executive director of the chamber, reported that Tri-Town maps are ready for printing. Maps were printed three years ago and most of them are gone.

Crowl said the new maps will carry a brief history of the three towns, Vernon, Tolland, and Ellington, and also several pictures of the area.

The Beautification Committee is making plans for a "Flower Power" sale and a Rid-Litter Day. Rid-Litter Day, an annual event, is scheduled for April 28 in the three towns.

Town trucks will pick up trash collected by such groups as Boy and Girl Scouts, who will be helping to clean up the towns.

In connection with the day, children in Grades 3 to 6 in Tri-Town schools will enter a poster contest. Prizes will be awarded by the chamber and MacDonald's Drive-In.

Some 4,000 geraniums and petunias have been ordered for the flower sale which will be May 17 and 18 at the Tolland County Agricultural Center on Rt. 30, Vernon. Window boxes will also be on sale.

Lee Higgins, chairman of the entertainment committee, reported that the next "Get Acquainted" breakfast is scheduled for April 22 at 8 a.m. at the Steak-Out in Talcottville. Breakfast will cost \$3 and chamber members are urged to bring guests.

Pazzato said he was told by

Elected

Joseph Colasanto, 33 Imperial Dr., has been elected chairman of the South Windsor Economic Development Commission to succeed Roland M. Aubin, who resigned last month.

Colasanto, a resident of South Windsor since 1969, is president of Colasanto Bros. Building Corp. of Storrs.

A native of Brooklyn, N.Y., Colasanto graduated from East Hartford High School in 1964 and attended Hillier College School of Architecture.

Between 1954 and 1957 he served with the First Infantry Division in Germany and with the 11th Airborne Division at Ft. Campbell, Ky.

He is a member of South Windsor Rotary Club, South Windsor Chamber of Commerce, St. Francis of Assisi Church and the South Windsor Democratic Town Committee. He has been a member of the Economic Development Commission since November, 1973.

Portrait Special

Limited Time Only

One 5x7 Color Portrait, Only 38¢

All ages. Babies, children and adults. Additional sittings—Groups or individuals in same family—\$1.00 per subject. The special choice from limited professional portraits—our selection! Portraits offered at low prices.

SATISFACTION GUARANTEED

SPENCER ST. MANCHESTER VERNON

NO HANDLING CHARGE

Put your Easter Shoe wardrobe in shape without putting your wallet out of shape.

Just come in to Tagway and look around. You'll find thousands of fine quality shoes for men, women and children on display. Famous names, too - like Jack and Jill children's shoes, Keds and Converse. All at easy-pleasing prices. We have a great selection for Easter. The latest fashions and styles, at low prices that let you buy several pairs. You can charge* too. Tagway makes Easter shoe shopping easy. Easy on your feet and your budget.



JACK and JILL SHOES for BOYS and GIRLS

Keds and CONVERSE

Tagway SHOES

MONEY BACK GUARANTEE We're so sure you'll love our shoes that (within 60 days) we will accept any pair of shoes, accompanied by a sales slip, for exchange or refund.

OPEN EVERY DAY 10 to 10
K-Mart Shopping Mall
207 Spencer Street, Manchester

Woodland Garden

168 Woodland St. Manchester 643-8474

For St. Patrick's Day True, Irish Shamrocks (Seed from Ireland) 69¢ 3 for \$2.00

2 1/2" Pot, only 69¢

3" Pots only 89¢

SEE US FOR: POTTED AZALEAS, HUMPS, AFRICAN VIOLETS, REIGER BEGONIAS, CINERARIAS, POUCH PLANTS, GERANIUMS FOR 69¢, BROMILIADS, plus 100'S OF HOUSE PLANTS, GIFT and TERRARIUM PLANTS. COME BROWSE IN A FAIRLAND OF VEGETATION and COLOR, plus WIDE, AIRY AISLES FOR EASY SHOPPING!

NURSERY DEPT. NOW ONLY SPECIALS

- Weeping Willows (each) large 2 gal. pot \$3.95
- FORSYTHIA (yellow) large 2 gal. pot reg. \$5.50
- WIGELIA (red) large 2 gal. pot reg. \$5.50
- LILACS large 2 gallon pot 5 for \$19.19

BUY FERTILIZER NOW & SAVE!

HOW ALL PURPOSE PLANT FOOD 5-10-5, 50 lbs., reg. \$6.95 NOW \$5.95

HAZ LAWN FOOD 10-6-4, 50 lbs., reg. \$6.95 NOW \$5.95

ORTHO LAWN FOOD, 12,000 square feet NOW \$12.95

GREENFIELD 12 LAWN FOOD 15,000 square feet SPECIAL \$18.95

SCOTT'S LAWN FOOD 15,000 square feet SAVE \$4.00 SPECIAL \$19.95

"Plant Something Alive In Seventy Five!"

CONN. SALVAGE CO., Inc., atlasts THE GLORIOUS EMPORIUM

CORNER OF HARTFORD ROAD & PINE ST., MANCHESTER - 649-7782

Hi Neighbor!

Well, my wife finally gave in - she let me go south to play golf. Before I left she made me agree to a whole set of rules. I wouldn't carouse while I was there; I wouldn't drink anything stronger than lemonade; I wouldn't even talk to girls; and last but not least, I WOULDN'T GO WITHOUT HER! So, I'm happy to report that we went, played some golf I'm not very proud of, and returned. Hopefully the motley crew did some work while I was away - here's a sampling of their labors.

Usually US

- 14.95 Hollywood Bed Frames 10.90
- 3.25 8' Fluorescent Tubes 1.95
- 3.50 Orson Garden/Auto Sprayer 1.79
- 1.00 3/4" Foam Padding 20' ft. .59
- 1.45 Yuban Freeze Dry Coffee 4 oz. 1.05
- 2.50 Yuban Freeze Dry Coffee 8 oz. 1.99
- 155.00 Set of 6 Mates Maple Chairs 102.99
- 299.95 48" Pine Table w/4 Chairs 149.70
- 449.95 Hercules 2 pc. Sofa & Chair 288.40
- 3.00 Easter Egg Kits 1.50
- 2.89 100 ft. Poly Clothline 2.00
- 89 Ziploc 30 gallon bags 49

Plus disposable diapers, boots and skates, clothing, greeting cards, mattresses, stereo sets & speakers, carpet, school supplies and hundred of things I can't even remember.

So come visit and enjoy the delicious complementary coffee while you look. We'll really enjoy seeing you. Remember that we sell with a real "No hard time" money back guarantee if your purchase does not please you in every way. And my wife says, "Don't forget your wallet!"

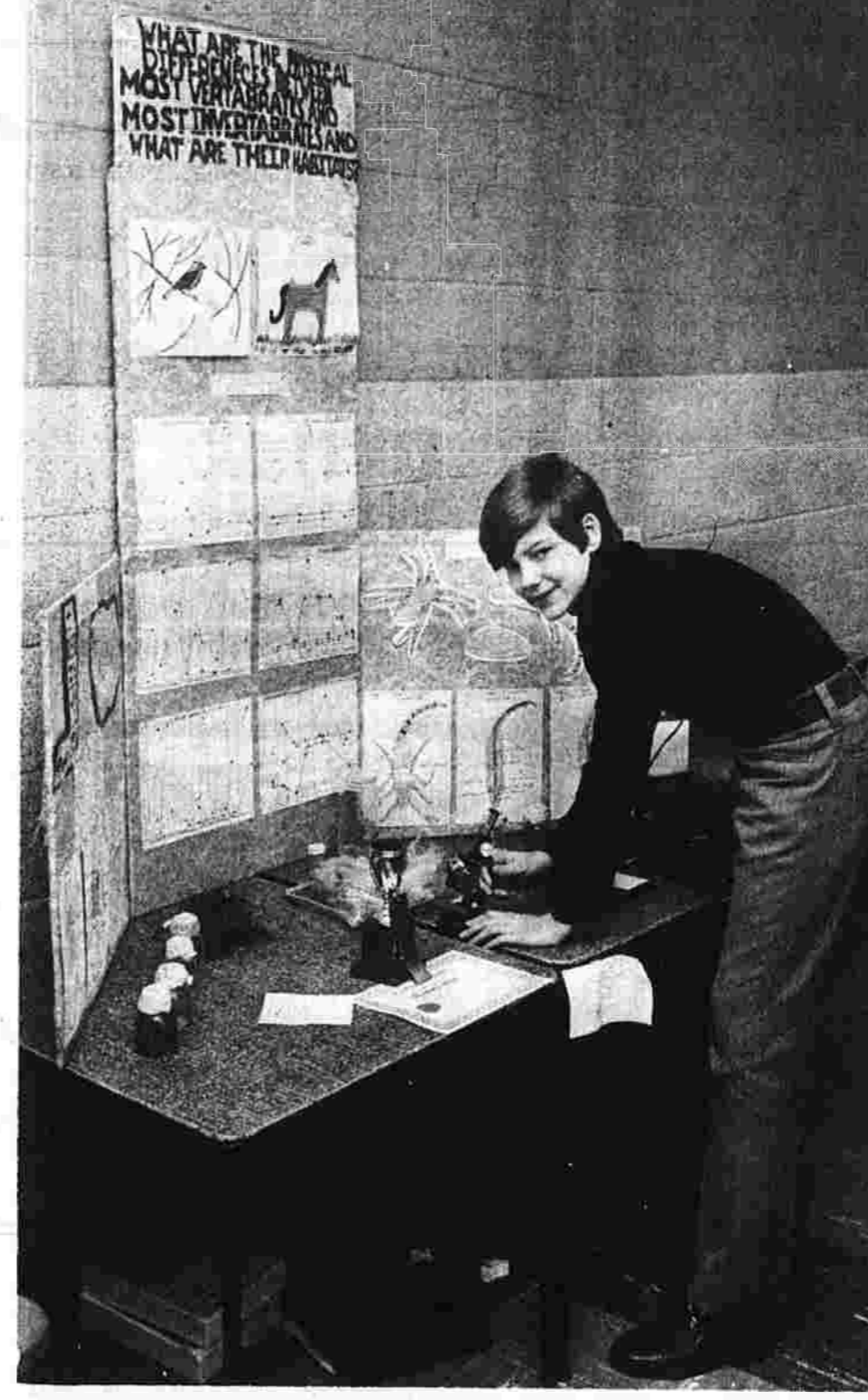
Remember OUR Exhausting Hours: Thurs. Eve (Ugh) 8 to 9; Fridays 10 to 9; Saturdays 10 to 5. We're resting less!

Conchally
Cecilia Rich



St. James Science Fair Winners

These are the winners of the recent St. James School Science Fair. In the top photo are the winners in the physical science category, Peter LaBelle, left, of 146 Porter St. and Mark Pagan of 32 E. Maple St. look over their solar energy exhibit. Below, Thomas Caffrey of 21 Limmore Dr. works on his exhibit in the biological science category. (Herald photos by Pinto)



MHS '50 Plans Oct. 18 Reunion

The Class of 1950 Manchester High School reunion committee is meeting Tuesday to discuss plans for its 25th year reunion. The meeting will be at 7:30 p.m. in the Community Room of First Federal Savings and Loan, W. Middle Tpk.

The reunion is scheduled for Oct. 18 at the Colony, Talcottville. Class members interested in helping with plans are invited to attend Tuesday's meeting.

Receipts were \$13,465,901 and estimates \$14,022,531.

Receipts to other funds as of Feb. 28 are: Fire District Fund, \$1,287,114 against 12-month estimates of \$1,941,671; Water Fund, \$498,712 against \$720,106; Sewer Fund, \$444,923 and \$697,480; Special Downtown Taxing District Fund, \$27,471 and \$63,150; and Data Processing Fund, \$108,063 and \$229,700.

725 E. Middle Turnpike

FRANK'S Supermarkets

OUR PRIDE: QUALITY MEATS & PERSONAL SERVICE

ALL OUR BEEF IS USDA CHOICE "The Finest Sold Anywhere"

DOUBLE S&H GREEN STAMPS SAT. 7 to 10 pm

EXTRA 200 EXTRA 300
EXTRA with \$20 purchase EXTRA with \$30 purchase

Not good during double stamp hours. Good Thurs., Fri., Sat., March 13, 14, 15

Turkeys

Riverside Young Grade A 12 to 16 lb. avg. 39¢ lb

USDA Choice Shoulder Cut ROAST BEEFlb. \$1.49	USDA Choice Shoulder Cut LONDON BROILlb. \$1.59
USDA Choice BONELESS ROLLED CHUCK ROASTlb. \$1.09	USDA Choice FIRST CUT CHUCK STEAKlb. 49¢
Family Pack PORK CHOPS End & Center Cuts 99¢ lb.	Mosey's Head Cut CORNED BEEF 89¢ lb.
Our Own Pork Hot or Sweet ITALIAN SAUSAGElb. \$1.09	From The Dell - Imported BOILED HAM 1/2 lb. 89¢
PEPSI COLA Diet or Regular 64 Oz. 79¢	Sweet Life VEGETABLES Cut or Waxed Green Beans, Sliced Carrots, Whole or Sliced White Potatoes - 16 oz. can 4 \$1.00 FOR
With coupon below FOLGERS COFFEE 1 lb. can 79¢	With coupon below, Sweet Life SUGAR 5 lb. bag \$2.28
POTATOES US No. 1 20 lbs. 79¢	SMALL EGGS Strictly Fresh Grade A Dozen 45¢
California Iceberg LETTUCE HEADS 4 \$1.00	BUTTER Land 'O Lake 1 lb. quarters 79¢ lb.
Snow White MUSHROOMS .LIMIT lb. 69¢	Fresh BROCCOLI RABBI .lb. 39¢

10¢ OFF 79¢ WITH COUPON 69¢ WITH COUPON \$2.28 WITH COUPON 89¢ WITH COUPON 49¢ WITH COUPON

• Citrus Trees • Large Palms • Norfolk Pine • Gardenias

PHONE 649-2522 HOURS: MON.-SAT. 10:00 - 5:30 THURSDAYS 10:00 - 9:00

1
3
M
A
R

1
3



Studying the contents of assorted math books has helped these members of the Manchester High School math team to place second in a recent math meet. Standing behind Cindy Sheldon, senior, left to right, Dave Beaulieu, junior; Mike Lombardo, senior; Micky Simon, junior; and Mark Otter, sophomore. (Herald photo by Pinto)

Burchill Says He Favors Contracting Road Sweeping

Bids will be opened March 21 in the Municipal Building for furnishing the Manchester Highway Department with its street sweeping needs for 1975. Burchill said the department is looking for initial and monthly sweeping of all parking lots. Prices are being sought for initial and monthly sweeping of all parking lots. Burchill said the department is looking for initial and monthly sweeping of all parking lots. Prices are being sought for initial and monthly sweeping of all parking lots.

There are very few public complaints and the new rule is good for the town, he said. The new rule is being dis-

MID-WINTER SALE/ABRATON

TURNPIKE TV & APPLIANCE

273 WEST MIDDLE TURNPIKE
NEXT TO STOP & SHOP
OPEN WED. THRU FRI. 9-9, SATURDAY 9-5

OPEN THURSDAY 9 to 9

WE SERVICE WHAT WE SELL
We have our own service department to service our customer needs. Our factory trained technicians take care of the product after it's in your home...

- FREE DELIVERY
- ON CONSOLE T.V.S
- ON CONSOLE STEREOS
- ON MAJOR APPLIANCES

USE YOUR MASTER CHARGE
CONVENIENT CREDIT TERMS AVAILABLE

MHS Math Team Second in Meet

The Manchester High School math team placed second with 98 points at a recent math meet in St. Paul's High School in Bristol. The Bristol Eastern High School math team won first place with a score of 99 points. Manchester's score was the highest ever achieved by the math team with 105 points as the highest number attainable.

Two Clubs Sponsoring Charity Bridge Play

Manchester bridge players may participate in a section of the spring American Contract Bridge League (ACBL) nationwide charity game Friday starting at 7:45 p.m. at 146 Hartford Rd., Rooms 102 and 103.

Spaying Clinic Bill To Be Heard Friday

Donna Holland Correspondent 646-0375
Establishment of dog and cat spaying and neutering clinics to reduce the number of unwanted dogs and cats in Connecticut will be the subject of a public hearing by the Environment Committee Friday at 10 a.m. in Room 418 at the State Capitol.

AGWAY

BIG-WIDE TIRE SALE

DUNLOP GT QUALIFIERS RAISED LETTERS 60 & 70 SERIES

G70-14 LIST PRICE \$51.30 AGWAY PRICE NOW \$38.88 PLUS F.E.T.	L60-15 LIST PRICE \$63.61 AGWAY PRICE NOW \$47.99 PLUS F.E.T.
-----------------------------------------------------------------------------------	-----------------------------------------------------------------------------------

ALL OTHER SIZES AT COMPARABLE SALE PRICES...OFFER GOOD THRU MARCH 15, 1975...EVEN ON TIRES WE MUST ORDER!
MOUNTING ON STEEL WHEELS ONLY!

AGWAY Inc.

540 New State Road, Buckland 643-5123

WESTINGHOUSE FAMILY SIZE WASHER \$188

ZENITH GIANT TRADE IN ALLOWANCES

10% OFF ALL KELVINATOR FREEZERS IN STOCK

KELVINATOR CHEST FREEZERS UPRIGHT FREEZERS 6 to 20 cubic feet

ENERGY WORLD

By THADDEUS C. KOPINSKI (UPI) - In the scramble to find ways to cut the country's fuel consumption, West Germany plans to harness excess hot water from power plant turbines to heat houses in winter. By piping 12 billion gallons of boiling water to individual households, the project envisages a saving equivalent to 115 million tons of oil a year.

Top Notch Big Discount Foods

IN EAST HARTFORD: 1150 Burnside Ave. 801 Silver Lane
IN MANCHESTER: 260 North Main St. at Main St.
IN GLASTONBURY: Fox Run Mall

Excedrin P.M. 1.48	Excedrin 1.19	Ultra Ban 5000 2.24	Silence Is Golden Cough Syrup 1.99	Vitalis Hair Tonic 1.85	Scope Mouthwash 1.39	Gillette The Dry Look 1.67
Vitalis Hair Tonic 1.29	Vitalis Dry 3" 1.37	Vitalis Dry Control Hair Spray 1.37	Ultra Ban Lotion Roll On 1.55	Miss Breck Hair Spray 1.08	Earthborn Shampoo 87¢	Earthborn Shampoo 1.24
Polident Powder for Dentures 97¢	Crest Toothpaste 70¢	Sure Deodorant 1.59	Head & Shoulders Shampoo 2.35	Prell Liquid Shampoo 99¢	Crest Toothpaste 1.03	Johnson & Johnson Band-Aid Brand Plastic Strips 1.09
Preference Colors by L'Oréal 2.75	Clairol Final Net Hair Spray 1.94	Adorn Firm & Free Non-Aerosol Hair Spray 1.79	Johnson & Johnson Pour On Rinse 89¢	Style Hair Sprays 99¢	Phillips Milk of Magnesia Tabs 1.15	Johnson & Johnson Dental Floss 89¢
Bayer Aspirin 2.33	Bayer Time-Release Aspirin 89¢	Breacol Cough Medication 1.75	Midol Tablets 1.67	Phillips Milk of Magnesia 95¢	Phillips Milk of Magnesia 89¢	Bayer's Aspirin 1.69
One-A-Day Vitamins 2.81	One-A-Day Vitamins 2.99	Alka Seltzer 1.14	Johnson's Baby Powder 1.57	"ACE" Brand Bandage 1.99	Clairol Herbal Rinse 1.33	Clairol Herbal Essence Shampoo 1.37
Gillette Platinum Plus Blades 99¢	Gillette Platinum Plus Blades 2.46	Maybelline Great Lash Mascara 1.75	Multi Scrub for Acne 25¢	Silence Is Golden Cough Syrup 1.36	Clairol Happiness 2.18	Clairol Nice & Easy Shampoo 2.00
Gillette The Dry Look 1.29	Soft & Dri Deodorants 99¢	Brand New Soft & Dri Super Dry Deodorant Spray 1.19	Brand New Soft & Dri Super Dry Deodorant Spray 2.34	Brand New Soft & Dri Super Dry Deodorant Spray 1.59	Clairol Frost & Tip Kit 4.79	Clairol Balm Colors 2.10

1
3
M
A
R
1
3

HAPPY SEWING BEGINS AT BEACONWAY

Beaconway fabric center

Spring fabric sale!

save 1.33 to 2.33 yd. on this fabulous buy! polyester double knits

save 50c yard famous Dan River gingham checks

save 55c to 1.05 yd. 4 1/2" wide no-iron novelty seersuckers

save up to \$2 yd. famous make washable polyester prints

144 yd. originally 1.99 to 2.49 yd.

99c yd. regularly 1.49 yd.

doorbuster notions sensations! woven rayon elastic 5 for \$1 reg. 25c-40c ea.

iron-on seam binding 6 for 25c reg. 35c ea.

novelty tapes and braids 3 for 25c reg. 25c-45c ea.

Sale ends Saturday.

1 • MANCHESTER 389 Broad Street
2 • EAST HARTFORD Putnam Bridge Plaza 17 Main St.
3 • BLOOMFIELD Copaco Shopping Center Cottage Grove Road Rt. 218
Open 10 a.m. to 9 p.m. Saturdays 'til 6
BankAmericard and Master Charge Available in Most Stores

INDEX

NOTICES

1 - Lost and Found
2 - Announcements
3 - Entertainment
4 - Auctions

FINANCIAL

5 - Bonds-Stocks-Mortgages
6 - Personal Loans
7 - Insurance

EMPLOYMENT

8 - Help Wanted
9 - Business Opportunities
10 - Situation Wanted

EDUCATION

11 - Schools-Colleges
12 - Schools-Colleges
13 - Schools-Colleges
14 - Schools-Colleges

REAL ESTATE

15 - Homes for Sale
16 - Lots for Sale
17 - Investment Property
18 - Business Property
19 - Real Estate Wanted
20 - Real Estate Wanted

MISC. SERVICES

21 - Services Offered
22 - Painting-Plumbing
23 - Building-Contracting
24 - Heating-Plumbing
25 - Heating-Plumbing
26 - Moving-Trucking-Storage
27 - Moving-Trucking-Storage

MISC. FOR SALE

28 - Articles for Sale
29 - Books-Records
30 - Dogs-Birds-Pets
31 - Antiques
32 - Boats & Accessories
33 - Sporting Goods
34 - Garden Products
35 - Miscellaneous
36 - Wanted to Buy

RENTALS

37 - Rooms for Rent
38 - Apartments for Rent
39 - Homes for Rent
40 - Business Property for Rent
41 - Misc. for Rent
42 - Wanted to Rent

AUTOMOTIVE

43 - Autos for Sale
44 - Trucks for Sale
45 - Heavy Equipment for Sale
46 - Motorcycles-Boats
47 - Campers-Trailers-Mobile Homes
48 - Automotive Service
49 - Autos for Rent

ADVERTISING RATES

1st day 10¢ per day
2-7 days 8¢ per day
8-14 days 6¢ per day
15-21 days 5¢ per day
22-28 days 4¢ per day
15 WORD MINIMUM
Happy Ads - \$2.00 each

HAPPY ADS

SMILE TODAY

Someone may have sent you a happy ad!

Happiness is - Reserving a table at WADDELL SCHOOL PTA MEETING MARKET April 12th, 9:30-3:30 Call Mrs. Richard H. Wright, or Mrs. David L. Caron

ADVERTISING DEADLINE

12:00 noon the day before publication.

PLEASE READ YOUR AD

Classified ads are taken over the phone as a convenience. The Herald is responsible for one incorrect insertion and no more than only to the size of the original advertisement. We do not assume the value of the advertisement will not be corrected by an advertiser's error.

NOTICES

Lost and Found

LOST - Passbook number 25-0102951, Savings Department of the Conn. Bank & Trust Co., application for payment. Call Dan Mosler, 648-2329 or 648-8263.

LOST - Saving Passbook number 064-01951, Hartford National Bank and Trust Co., North Manchester office. Application made for payment. Call Dan Mosler, 648-2329 or 648-8263.

PERSONALS

INCOME tax returns prepared in the privacy of your home. Call Dan Mosler, 648-2329 or 648-8263.

INCOME Tax preparation - your home or mine. Available by Danny Dymally, 648-5996.

TAX RETURNS and accounting done professionally. Reasonable rates. Confidential. Free estimates. Call Dan Hickey, 649-6145.

INCOME TAX returns prepared in your home. Reasonable. Call H.H. Wilson, 648-9569.

RUSSELL'S Barber Shop, corner Oak and Spruce, will close for vacation March 17-26. Open Thursday, March 14. All benefits not drop in the week for the traffic passing by, the age and condition of the cars and trucks, the weather and the place where the sample was taken.

The team reported its results in the current issue of Environmental Health and concluded that the casual pedestrian should be wary to worry about unless he or she is a persistent shopper burdened by heavy bags.

But the report said those who habitually walk on city streets such as street repair crews, street cleaners, public utility workers, street vendors, delivery men and taxi and bus drivers are at much greater risk of being affected by carbon monoxide.

Carbon monoxide concentrations along busy streets ranged from 10 to 20 parts per million (ppm). United States standards for the regularly exposed person set ppm as the maximum for eight hours of exposure and 35 ppm for one hour. Canada's limits are similar.

Carbon monoxide displaces oxygen from the blood and therefore reduces the amount of oxygen that reaches tissue. In high concentrations, which would not be reached on streets, the gas can kill. In lesser concentrations, carbon monoxide poisoning can affect judgment, exercise ability and cause dizziness and headaches.

Dr. Nicholas Rummo, acting director of clinical studies at the U.S. National Environmental Research Center in North Carolina, said in a telephone interview that concentrations of 50 parts per million can be a hazardous level for someone having some degree of heart disease, a common condition for people over 45. Healthy persons, however, should be able to tolerate such conditions.

The Canadian researchers, led by Geoffrey R. Wright of the university's department of environmental health, said that the risks of carbon monoxide poisoning to fire fighters, tunnel police, garage attendants and foundry workers have been less than appreciated.

"However, the danger of those working on abouts a 1,000 open street has been less widely appreciated," the report said.

CUT THIS AD OUT TO KEEP US HANDY!

denial f. reale

SORRY

We are one day ahead with our Friday ad, but we thought you would like a head start.

CONDOMINIUM - 2 bedroom aluminum sided Ranch style. Completely carpeted, extra large master bedroom. All appliances, central air, only \$29,900.

IMMACULATE - 6 room Ranch, 1 1/2 baths, large kitchen, family room with fireplace, large yard, nice neighbors, \$34,900.

JUST REDUCED - to \$22,000. Live rent free in this 3 family home. Located on Main Street, Coventry. Owner anxious.

NEW LISTING - Completely vinyl sided 6 room Colonial. Front to back living room with fireplace, front to back living size master bedroom. Immaculate condition. REALE value at \$39,900.

NEW LISTING - 7 room Ranch with vinyl dining room. Enclosed heated sun porch, aluminum sided, 2 car garage. Lots of extras. Must see. Only \$49,900.

TAKE A SWIM - In this one year old pool attached to the lovely aluminum sided, 2 1/2 bath, fireplace Colonial with king size bed room, only \$45,900.

BRAND NEW RAISED RANCH - 1 1/2 bathrooms, aluminum sided, fireplace, all tilt-out windows. One acre lot, 2 car garage offered at \$44,900.

BRAND NEW - 4 bedroom Colonial, 1st floor dining room, built in breakfast room, 2 1/2 baths, 2 car garage, custom built on one acre lot. Call for details. Offered at \$56,900.

NEW FAMILY - Investment property in Manchester. Two 4 room apartments, one 8 room apartment. Income over \$700 per month. Asking only \$52,500.

5 FAMILY - In Coventry. Good investment. Four 4 room apartments, one 6 room apartment. Located on 3 acres. Asking \$52,900.

ROOM TO RUN - On this 2 1/2 acre building lot. Terms available.

MANCHESTER BRAND NEW - Colonial, floor to ceiling fireplace. Front to back living room, bath and one half king size master bedroom. Custom built by Mac Construction Co. Only \$41,900.

LIST YOUR HOUSE IN...

REALE'S CORNER

175 MAIN STREET PHONE 646-4525

FM Real Estate Center

DUPLEXES WE HAVE THEM!

\$38,500 - Remodeled 6-6, gas furnace, new wiring.

\$38,900 - Assumable 7 1/2 VA, 6-8. Needs some work.

\$41,000 - Central location, 5-5 flat, two finished rooms in attic, 2-car garage.

\$45,500 - Large 6-8. New roof, new carpeting, recently decorated. Must be sold. \$39,800 mortgage could be assumed to qualified buyer.

\$47,900 - Huge 6-6 with 2 attic rooms, 2-car garage, large lot. Possible assumption to qualified buyer.

\$49,900 - Gorgeous 6-8. Extremely nice condition, 2 fireplaces, 2-car garage.

\$54,900 - Newer 5-5 duplex, 3 years old, gas furnaces, aluminum siding.

\$56,500 - Brand new 5-5 duplex. Choose your colors. Ideal location.

\$77,000 - Rockville, 7-unit package. Two and 5-family. Good income. Secondary financing available.

\$92,900 - Rockville, Three-family. Great shape.

HEBROH

Spring is just around the corner. Watch it happen from your beautiful deck or screened porch. Hundreds of built-in barbecues, swimming pools, 100% carpeting, 100% vinyl flooring, 100% 3-bedroom Raised Ranch with 2-car garage and convenient location, \$52,000. Philbrick Agency, Realtors, 646-4200.

MANCHESTER VICINITY

Call us and find out why it may be cheaper to buy than rent. Aluminum sided Duplex, 2 and 6 rooms, on corner lot. Priced to sell at \$21,999.

PITKIN STREET - Large 6-6 Colonial, 1 1/2 baths, 2-car garage, 116x150 treed corner lot. An unusual offering. Bel Air Real Estate, 643-5323.

COVENTRY \$26,900

Three-bedroom full-dormer Cape, double lot, 100' front private beach, large fireplace and more!

WARREN E. HOWLAND Realtors 643-1108

MANCHESTER - Seven rooms and 2 baths in this pleasant older home. Walk to restaurants, shopping, library, two parks, Senior Citizens Center. St. James School and bus line. Interior layout is good for an "in-law" situation. Offered for \$49,900.

MANCHESTER - Seven rooms and 2 baths in this pleasant older home. Walk to restaurants, shopping, library, two parks, Senior Citizens Center. St. James School and bus line. Interior layout is good for an "in-law" situation. Offered for \$49,900.

MANCHESTER - Seven rooms and 2 baths in this pleasant older home. Walk to restaurants, shopping, library, two parks, Senior Citizens Center. St. James School and bus line. Interior layout is good for an "in-law" situation. Offered for \$49,900.

MANCHESTER - Seven rooms and 2 baths in this pleasant older home. Walk to restaurants, shopping, library, two parks, Senior Citizens Center. St. James School and bus line. Interior layout is good for an "in-law" situation. Offered for \$49,900.

MANCHESTER - Seven rooms and 2 baths in this pleasant older home. Walk to restaurants, shopping, library, two parks, Senior Citizens Center. St. James School and bus line. Interior layout is good for an "in-law" situation. Offered for \$49,900.

MANCHESTER - Seven rooms and 2 baths in this pleasant older home. Walk to restaurants, shopping, library, two parks, Senior Citizens Center. St. James School and bus line. Interior layout is good for an "in-law" situation. Offered for \$49,900.

MANCHESTER - Seven rooms and 2 baths in this pleasant older home. Walk to restaurants, shopping, library, two parks, Senior Citizens Center. St. James School and bus line. Interior layout is good for an "in-law" situation. Offered for \$49,900.

MANCHESTER - Seven rooms and 2 baths in this pleasant older home. Walk to restaurants, shopping, library, two parks, Senior Citizens Center. St. James School and bus line. Interior layout is good for an "in-law" situation. Offered for \$49,900.

MANCHESTER - Seven rooms and 2 baths in this pleasant older home. Walk to restaurants, shopping, library, two parks, Senior Citizens Center. St. James School and bus line. Interior layout is good for an "in-law" situation. Offered for \$49,900.

MANCHESTER - Seven rooms and 2 baths in this pleasant older home. Walk to restaurants, shopping, library, two parks, Senior Citizens Center. St. James School and bus line. Interior layout is good for an "in-law" situation. Offered for \$49,900.

MANCHESTER - Seven rooms and 2 baths in this pleasant older home. Walk to restaurants, shopping, library, two parks, Senior Citizens Center. St. James School and bus line. Interior layout is good for an "in-law" situation. Offered for \$49,900.

MANCHESTER - Seven rooms and 2 baths in this pleasant older home. Walk to restaurants, shopping, library, two parks, Senior Citizens Center. St. James School and bus line. Interior layout is good for an "in-law" situation. Offered for \$49,900.

MANCHESTER - Seven rooms and 2 baths in this pleasant older home. Walk to restaurants, shopping, library, two parks, Senior Citizens Center. St. James School and bus line. Interior layout is good for an "in-law" situation. Offered for \$49,900.

MANCHESTER - Seven rooms and 2 baths in this pleasant older home. Walk to restaurants, shopping, library, two parks, Senior Citizens Center. St. James School and bus line. Interior layout is good for an "in-law" situation. Offered for \$49,900.

MANCHESTER - Seven rooms and 2 baths in this pleasant older home. Walk to restaurants, shopping, library, two parks, Senior Citizens Center. St. James School and bus line. Interior layout is good for an "in-law" situation. Offered for \$49,900.

MANCHESTER - Seven rooms and 2 baths in this pleasant older home. Walk to restaurants, shopping, library, two parks, Senior Citizens Center. St. James School and bus line. Interior layout is good for an "in-law" situation. Offered for \$49,900.

MANCHESTER - Seven rooms and 2 baths in this pleasant older home. Walk to restaurants, shopping, library, two parks, Senior Citizens Center. St. James School and bus line. Interior layout is good for an "in-law" situation. Offered for \$49,900.

MANCHESTER - Seven rooms and 2 baths in this pleasant older home. Walk to restaurants, shopping, library, two parks, Senior Citizens Center. St. James School and bus line. Interior layout is good for an "in-law" situation. Offered for \$49,900.

MANCHESTER - Seven rooms and 2 baths in this pleasant older home. Walk to restaurants, shopping, library, two parks, Senior Citizens Center. St. James School and bus line. Interior layout is good for an "in-law" situation. Offered for \$49,900.

MANCHESTER - Seven rooms and 2 baths in this pleasant older home. Walk to restaurants, shopping, library, two parks, Senior Citizens Center. St. James School and bus line. Interior layout is good for an "in-law" situation. Offered for \$49,900.

MANCHESTER - Seven rooms and 2 baths in this pleasant older home. Walk to restaurants, shopping, library, two parks, Senior Citizens Center. St. James School and bus line. Interior layout is good for an "in-law" situation. Offered for \$49,900.

MANCHESTER - Seven rooms and 2 baths in this pleasant older home. Walk to restaurants, shopping, library, two parks, Senior Citizens Center. St. James School and bus line. Interior layout is good for an "in-law" situation. Offered for \$49,900.

MANCHESTER - Seven rooms and 2 baths in this pleasant older home. Walk to restaurants, shopping, library, two parks, Senior Citizens Center. St. James School and bus line. Interior layout is good for an "in-law" situation. Offered for \$49,900.

MANCHESTER - Seven rooms and 2 baths in this pleasant older home. Walk to restaurants, shopping, library, two parks, Senior Citizens Center. St. James School and bus line. Interior layout is good for an "in-law" situation. Offered for \$49,900.

MANCHESTER - Seven rooms and 2 baths in this pleasant older home. Walk to restaurants, shopping, library, two parks, Senior Citizens Center. St. James School and bus line. Interior layout is good for an "in-law" situation. Offered for \$49,900.

MANCHESTER - Seven rooms and 2 baths in this pleasant older home. Walk to restaurants, shopping, library, two parks, Senior Citizens Center. St. James School and bus line. Interior layout is good for an "in-law" situation. Offered for \$49,900.

MANCHESTER - Seven rooms and 2 baths in this pleasant older home. Walk to restaurants, shopping, library, two parks, Senior Citizens Center. St. James School and bus line. Interior layout is good for an "in-law" situation. Offered for \$49,900.

MANCHESTER - Seven rooms and 2 baths in this pleasant older home. Walk to restaurants, shopping, library, two parks, Senior Citizens Center. St. James School and bus line. Interior layout is good for an "in-law" situation. Offered for \$49,900.

MANCHESTER - Seven rooms and 2 baths in this pleasant older home. Walk to restaurants, shopping, library, two parks, Senior Citizens Center. St. James School and bus line. Interior layout is good for an "in-law" situation. Offered for \$49,900.

MANCHESTER - Seven rooms and 2 baths in this pleasant older home. Walk to restaurants, shopping, library, two parks, Senior Citizens Center. St. James School and bus line. Interior layout is good for an "in-law" situation. Offered for \$49,900.

MANCHESTER - Seven rooms and 2 baths in this pleasant older home. Walk to restaurants, shopping, library, two parks, Senior Citizens Center. St. James School and bus line. Interior layout is good for an "in-law" situation. Offered for \$49,900.

MANCHESTER - Seven rooms and 2 baths in this pleasant older home. Walk to restaurants, shopping, library, two parks, Senior Citizens Center. St. James School and bus line. Interior layout is good for an "in-law" situation. Offered for \$49,900.

MANCHESTER - Seven rooms and 2 baths in this pleasant older home. Walk to restaurants, shopping, library, two parks, Senior Citizens Center. St. James School and bus line. Interior layout is good for an "in-law" situation. Offered for \$49,900.

MANCHESTER - Seven rooms and 2 baths in this pleasant older home. Walk to restaurants, shopping, library, two parks, Senior Citizens Center. St. James School and bus line. Interior layout is good for an "in-law" situation. Offered for \$49,900.

MANCHESTER - Seven rooms and 2 baths in this pleasant older home. Walk to restaurants, shopping, library, two parks, Senior Citizens Center. St. James School and bus line. Interior layout is good for an "in-law" situation. Offered for \$49,900.

MANCHESTER - Seven rooms and 2 baths in this pleasant older home. Walk to restaurants, shopping, library, two parks, Senior Citizens Center. St. James School and bus line. Interior layout is good for an "in-law" situation. Offered for \$49,900.

MANCHESTER - Seven rooms and 2 baths in this pleasant older home. Walk to restaurants, shopping, library, two parks, Senior Citizens Center. St. James School and bus line. Interior layout is good for an "in-law" situation. Offered for \$49,900.

MANCHESTER - Seven rooms and 2 baths in this pleasant older home. Walk to restaurants, shopping, library, two parks, Senior Citizens Center. St. James School and bus line. Interior layout is good for an "in-law" situation. Offered for \$49,900.

MANCHESTER - Seven rooms and 2 baths in this pleasant older home. Walk to restaurants, shopping, library, two parks, Senior Citizens Center. St. James School and bus line. Interior layout is good for an "in-law" situation. Offered for \$49,900.

MANCHESTER - Seven rooms and 2 baths in this pleasant older home. Walk to restaurants, shopping, library, two parks, Senior Citizens Center. St. James School and bus line. Interior layout is good for an "in-law" situation. Offered for \$49,900.

MANCHESTER - Seven rooms and 2 baths in this pleasant older home. Walk to restaurants, shopping, library, two parks, Senior Citizens Center. St. James School and bus line. Interior layout is good for an "in-law" situation. Offered for \$49,900.

MANCHESTER - Seven rooms and 2 baths in this pleasant older home. Walk to restaurants, shopping, library, two parks, Senior Citizens Center. St. James School and bus line. Interior layout is good for an "in-law" situation. Offered for \$49,900.

MANCHESTER - Seven rooms and 2 baths in this pleasant older home. Walk to restaurants, shopping, library, two parks, Senior Citizens Center. St. James School and bus line. Interior layout is good for an "in-law" situation. Offered for \$49,900.

MANCHESTER - Seven rooms and 2 baths in this pleasant older home. Walk to restaurants, shopping, library, two parks, Senior Citizens Center. St. James School and bus line. Interior layout is good for an "in-law" situation. Offered for \$49,900.

MANCHESTER - Seven rooms and 2 baths in this pleasant older home. Walk to restaurants, shopping, library, two parks, Senior Citizens Center. St. James School and bus line. Interior layout is good for an "in-law" situation. Offered for \$49,900.

MANCHESTER - Seven rooms and 2 baths in this pleasant older home. Walk to restaurants, shopping, library, two parks, Senior Citizens Center. St. James School and bus line. Interior layout is good for an "in-law" situation. Offered for \$49,900.

MANCHESTER - Seven rooms and 2 baths in this pleasant older home. Walk to restaurants, shopping, library, two parks, Senior Citizens Center. St. James School and bus line. Interior layout is good for an "in-law" situation. Offered for \$49,900.

MANCHESTER - Seven rooms and 2 baths in this pleasant older home. Walk to restaurants, shopping, library, two parks, Senior Citizens Center. St. James School and bus line. Interior layout is good for an "in-law" situation. Offered for \$49,900.

MANCHESTER - Seven rooms and 2 baths in this pleasant older home. Walk to restaurants, shopping, library, two parks, Senior Citizens Center. St. James School and bus line. Interior layout is good for an "in-law" situation. Offered for \$49,900.

MANCHESTER - Seven rooms and 2 baths in this pleasant older home. Walk to restaurants, shopping, library, two parks, Senior Citizens Center. St. James School and bus line. Interior layout is good for an "in-law" situation. Offered for \$49,900.

MANCHESTER - Seven rooms and 2 baths in this pleasant older home. Walk to restaurants, shopping, library, two parks, Senior Citizens Center. St. James School and bus line. Interior layout is good for an "in-law" situation. Offered for \$49,900.

MANCHESTER - Seven rooms and 2 baths in this pleasant older home. Walk to restaurants, shopping, library, two parks, Senior Citizens Center. St. James School and bus line. Interior layout is good for an "in-law" situation. Offered for \$49,900.

MANCHESTER - Seven rooms and 2 baths in this pleasant older home. Walk to restaurants, shopping, library, two parks, Senior Citizens Center. St. James School and bus line. Interior layout is good for an "in-law" situation. Offered for \$49,900.

MANCHESTER - Seven rooms and 2 baths in this pleasant older home. Walk to restaurants, shopping, library, two parks, Senior Citizens Center. St. James School and bus line. Interior layout is good for an "in-law" situation. Offered for \$49,900.

MANCHESTER - Seven rooms and 2 baths in this pleasant older home. Walk to restaurants, shopping, library, two parks, Senior Citizens Center. St. James School and bus line. Interior layout is good for an "in-law" situation. Offered for \$49,900.

MANCHESTER - Seven rooms and 2 baths in this pleasant older home. Walk to restaurants, shopping, library, two parks, Senior Citizens Center. St. James School and bus line. Interior layout is good for an "in-law" situation. Offered for \$49,900.

MANCHESTER - Seven rooms and 2 baths in this pleasant older home. Walk to restaurants, shopping, library, two parks, Senior Citizens Center. St. James School and bus line. Interior layout is good for an "in-law" situation. Offered for \$49,900.

MANCHESTER - Seven rooms and 2 baths in this pleasant older home. Walk to restaurants, shopping, library, two parks, Senior Citizens Center. St. James School and bus line. Interior layout is good for an "in-law" situation. Offered for \$49,900.

MANCHESTER - Seven rooms and 2 baths in this pleasant older home. Walk to restaurants, shopping, library, two parks, Senior Citizens Center. St. James School and bus line. Interior layout is good for an "in-law" situation. Offered for \$49,900.

MANCHESTER - Seven rooms and 2 baths in this pleasant older home. Walk to restaurants, shopping, library, two parks, Senior Citizens Center. St. James School and bus line. Interior layout is good for an "in-law" situation. Offered for \$49,900.

MANCHESTER - Seven rooms and 2 baths in this pleasant older home. Walk to restaurants, shopping, library, two parks, Senior Citizens Center. St. James School and bus line. Interior layout is good for an "in-law" situation. Offered for \$49,900.

MANCHESTER - Seven rooms and 2 baths in this pleasant older home. Walk to restaurants, shopping, library, two parks, Senior Citizens Center. St. James School and bus line. Interior layout is good for an "in-law" situation. Offered for \$49,900.

MANCHESTER - Seven rooms and 2 baths in this pleasant older home. Walk to restaurants, shopping, library, two parks, Senior Citizens Center. St. James School and bus line. Interior layout is good for an "in-law" situation. Offered for \$49,900.

MANCHESTER - Seven rooms and 2 baths in this pleasant older home. Walk to restaurants, shopping, library, two parks, Senior Citizens Center. St. James School and bus line. Interior layout is good for an "in-law" situation. Offered for \$49,900.

MANCHESTER - Seven rooms and 2 baths in this pleasant older home. Walk to restaurants, shopping, library, two parks, Senior Citizens Center. St. James School and bus line. Interior layout is good for an "in-law" situation. Offered for \$49,900.

MANCHESTER - Seven rooms and 2 baths in this pleasant older home. Walk to restaurants, shopping, library, two parks, Senior Citizens Center. St. James School and bus line. Interior layout is good for an "in-law" situation. Offered for \$49,900.

MANCHESTER - Seven rooms and 2 baths in this pleasant older home. Walk to restaurants, shopping, library, two parks, Senior Citizens Center. St. James School and bus line. Interior layout is good for an "in-law" situation. Offered for \$49,900.

MANCHESTER - Seven rooms and 2 baths in this pleasant older home. Walk to restaurants, shopping, library, two parks, Senior Citizens Center. St. James School and bus line. Interior layout is good for an "in-law" situation. Offered for \$49,900.

MANCHESTER - Seven rooms and 2 baths in this pleasant older home. Walk to restaurants, shopping, library, two parks, Senior Citizens Center. St. James School and bus line. Interior layout is good for an "in-law" situation. Offered for \$49,900.

MANCHESTER - Seven rooms and 2 baths in this pleasant older home. Walk to restaurants, shopping, library, two parks, Senior Citizens Center. St. James School and bus line. Interior layout is good for an "in-law" situation. Offered for \$49,900.

MANCHESTER - Seven rooms and 2 baths in this pleasant older home. Walk to restaurants, shopping, library, two parks, Senior Citizens Center. St. James School and bus line. Interior layout is good for an "in-law" situation. Offered for \$49,900.

MANCHESTER - Seven rooms and 2 baths in this pleasant older home. Walk to restaurants, shopping, library, two parks, Senior Citizens Center. St. James School and bus line. Interior layout is good for an "in-law" situation. Offered for \$49,900.

MANCHESTER - Seven rooms and 2 baths in this pleasant older home. Walk to restaurants, shopping, library, two parks, Senior Citizens Center. St. James School and bus line. Interior layout is good for an "in-law" situation. Offered for \$49,900.

MANCHESTER - Seven rooms and 2 baths in this pleasant older home. Walk to restaurants, shopping, library, two parks, Senior Citizens Center. St. James School and bus line. Interior layout is good for an "in-law" situation. Offered for \$49,900.

MANCHESTER - Seven rooms and 2 baths in this pleasant older home. Walk to restaurants, shopping, library, two parks, Senior Citizens Center. St. James School and bus line. Interior layout is good for an "in-law" situation. Offered for \$49,900.

MANCHESTER - Seven rooms and 2 baths in this pleasant older home. Walk to restaurants, shopping, library, two parks, Senior Citizens Center. St. James School and bus line. Interior layout is good for an "in-law" situation. Offered for \$49,900.

MANCHESTER - Seven rooms and 2 baths in this pleasant older home. Walk to restaurants, shopping, library, two parks, Senior Citizens Center. St. James School and bus line. Interior layout is good for an "in-law" situation. Offered for \$49,900.

MANCHESTER - Seven rooms and 2 baths in this pleasant older home. Walk to restaurants, shopping, library, two parks, Senior Citizens Center. St. James School and bus line. Interior layout is good for an "in-law" situation. Offered for \$49,900.

MANCHESTER - Seven rooms and 2 baths in this pleasant older home. Walk to restaurants, shopping, library, two parks, Senior Citizens Center. St. James School and bus line. Interior layout is good for an "in-law" situation. Offered for \$49,900.

MANCHESTER - Seven rooms and 2 baths in this pleasant older home. Walk to restaurants, shopping, library, two parks, Senior Citizens Center. St. James School and bus line. Interior layout is good for an "in-law" situation. Offered for \$49,900.

MANCHESTER - Seven rooms and 2 baths in this pleasant older home. Walk to restaurants, shopping, library, two parks, Senior Citizens Center. St. James School and bus line. Interior layout is good for an "in-law" situation. Offered for \$49,900.

MANCHESTER - Seven rooms and 2 baths in this pleasant older home. Walk to restaurants, shopping, library, two parks, Senior Citizens Center. St. James School and bus line. Interior layout is good for an "in-law" situation. Offered for \$49,900.

MANCHESTER - Seven rooms and 2 baths in this pleasant older home. Walk to restaurants, shopping, library, two parks, Senior Citizens Center. St. James School and bus line. Interior layout is good for an "in-law" situation. Offered for \$49,900.

MANCHESTER - Seven rooms and 2 baths in this pleasant older home. Walk to restaurants, shopping, library, two parks, Senior Citizens Center. St. James School and bus line. Interior layout is good for an "in-law" situation. Offered for \$49,900.

MANCHESTER - Seven rooms and 2 baths in this pleasant older home. Walk to restaurants, shopping, library, two parks, Senior Citizens Center. St. James School and bus line. Interior layout is good for an "in-law" situation. Offered for \$49,900.

MANCHESTER - Seven rooms and 2 baths in this pleasant older home. Walk to restaurants, shopping, library, two parks, Senior Citizens Center. St. James School and bus line. Interior layout is good for an "in-law" situation. Offered for \$49,900.

MANCHESTER - Seven rooms and 2 baths in this pleasant older home. Walk to restaurants, shopping, library, two parks, Senior Citizens Center. St. James School and bus line. Interior layout is good for an "in-law" situation. Offered for \$49,900.

MANCHESTER - Seven rooms and 2 baths in this pleasant older home. Walk to restaurants, shopping, library, two parks, Senior Citizens Center. St. James School and bus line. Interior layout is good for an "in-law" situation. Offered for \$49,900.

MANCHESTER - Seven rooms and 2 baths in this pleasant older home. Walk to restaurants, shopping, library, two parks, Senior Citizens Center. St. James School and bus line. Interior layout is good for an "in-law" situation. Offered for \$49,900.

MANCHESTER - Seven rooms and 2 baths in this pleasant older home. Walk to restaurants, shopping, library, two parks, Senior Citizens Center. St. James School and bus line. Interior layout is good for an "in-law" situation. Offered for \$49,900.

MANCHESTER - Seven rooms and 2 baths in this pleasant older home. Walk to restaurants, shopping, library, two parks, Senior Citizens Center. St. James School and bus line. Interior layout is good for an "in-law" situation. Offered for \$49,900.

MANCHESTER - Seven rooms and 2 baths in this pleasant older home. Walk to restaurants, shopping, library, two parks, Senior Citizens Center. St. James School and bus line. Interior layout is good for an "in-law" situation. Offered for \$49,900.

MANCHESTER - Seven rooms and 2 baths in this pleasant older home. Walk to restaurants, shopping, library, two parks, Senior Citizens Center. St. James School and bus line. Interior layout is good for an "in-law" situation. Offered for \$49,900.

MANCHESTER - Seven rooms and 2 baths in this pleasant older home. Walk to restaurants, shopping, library, two parks, Senior Citizens Center. St. James School and bus line. Interior layout is good for an "in-law" situation. Offered for \$49,900.

MANCHESTER - Seven rooms and 2 baths in this pleasant older home. Walk to restaurants, shopping, library, two parks, Senior Citizens Center. St. James School and bus line. Interior layout is good for an "in-law" situation. Offered for \$49,900.

MANCHESTER - Seven rooms and 2 baths in this pleasant older home. Walk to restaurants, shopping, library, two parks, Senior Citizens Center. St. James School and bus line. Interior layout is good for an "in-law" situation. Offered for \$49,900.

MANCHESTER - Seven rooms and 2 baths in this pleasant older home. Walk to restaurants, shopping, library, two parks, Senior Citizens Center. St. James School and bus line. Interior layout is good for an "in-law" situation. Offered for \$49,900.

MANCHESTER - Seven rooms and 2 baths in this pleasant older home. Walk to restaurants, shopping, library, two parks, Senior Citizens Center. St. James School and bus line. Interior layout is good for an "in-law" situation. Offered for \$49,900.

MANCHESTER - Seven rooms and 2 baths in this pleasant older home. Walk to restaurants, shopping, library, two parks, Senior Citizens Center. St. James School and bus line. Interior layout is good for an "in-law" situation. Offered for \$49,900.

MANCHESTER - Seven rooms and 2 baths in this pleasant older home. Walk to restaurants, shopping, library, two parks, Senior Citizens Center. St. James School and bus line. Interior layout is good for an "in-law" situation. Offered for \$49,900.

MANCHESTER - Seven rooms and 2 baths in this pleasant older home. Walk to restaurants, shopping, library, two parks, Senior Citizens Center. St. James School and bus line. Interior layout is good for an "in-law" situation. Offered for \$49,900.

MANCHESTER - Seven rooms and 2 baths in this pleasant older home. Walk to restaurants, shopping, library, two parks, Senior Citizens Center. St. James School and bus line. Interior layout is good for an "in-law" situation. Offered for \$49,900.

MANCHESTER - Seven rooms and 2 baths in this pleasant older home. Walk to restaurants, shopping, library, two parks, Senior Citizens Center. St. James School and bus line. Interior layout is good for an "in-law" situation. Offered for \$49,900.

MANCHESTER - Seven rooms and 2 baths in this pleasant older home. Walk to restaurants, shopping, library, two parks, Senior Citizens Center. St. James School and bus line. Interior layout is good for an "in-law" situation. Offered for \$49,900.

MANCHESTER - Seven rooms and 2 baths in this pleasant older home. Walk to restaurants, shopping, library, two parks, Senior Citizens Center. St. James School and bus line. Interior layout is good for an "in-law" situation. Offered for \$49,900.

MANCHESTER - Seven rooms and 2 baths in this pleasant older home. Walk to restaurants, shopping, library, two parks, Senior Citizens Center. St. James School and bus line. Interior layout is good for an "in-law" situation. Offered for \$49,900.

MANCHESTER - Seven rooms and 2 baths in this pleasant older home. Walk to restaurants, shopping, library, two parks, Senior Citizens Center. St. James School and bus line. Interior layout is good for an "in-law" situation. Offered for \$49,900.

MANCHESTER - Seven rooms and 2 baths in this pleasant older home. Walk to restaurants, shopping, library, two parks, Senior Citizens Center. St. James School and bus line. Interior layout is good for an "in-law" situation. Offered for \$49,900.

MANCHESTER - Seven rooms and 2 baths in this pleasant older home. Walk to restaurants, shopping, library, two parks, Senior Citizens Center. St. James School and bus line. Interior layout is good for an "in-law" situation. Offered for \$49,900.

MANCHESTER - Seven rooms and 2 baths in this pleasant older home. Walk to restaurants, shopping, library, two parks, Senior Citizens Center. St. James School and bus line. Interior layout is good for an "in-law" situation. Offered for \$49,900.

MANCHESTER - Seven rooms and 2 baths in this pleasant older home. Walk to restaurants, shopping, library, two parks, Senior Citizens Center. St. James School and bus line. Interior layout is good for an "in-law" situation. Offered for \$49,900.

MANCHESTER - Seven rooms and 2 baths in this pleasant older home. Walk to restaurants, shopping, library, two parks, Senior Citizens Center. St. James School and bus line. Interior layout is good for an "in-law" situation. Offered for \$49,900.

MANCHESTER - Seven rooms and 2 baths in this pleasant older home. Walk to restaurants, shopping, library, two parks, Senior Citizens Center. St. James School and bus line. Interior layout is good for an "in-law" situation. Offered for \$49,900.

MANCHESTER - Seven rooms and 2 baths in this pleasant older home. Walk to restaurants, shopping, library, two parks, Senior Citizens Center. St. James School and bus line. Interior layout is good for an "in-law" situation. Offered for \$49,900.

MANCHESTER - Seven rooms and 2 baths in this pleasant older home. Walk to restaurants, shopping, library, two parks, Senior Citizens Center. St. James School and bus line. Interior layout is good for an "in-law" situation. Offered for \$49,900.

MANCHESTER - Seven rooms and 2 baths in this pleasant older home. Walk to restaurants, shopping, library, two parks, Senior Citizens Center. St. James School and bus line. Interior layout is good for an "in-law" situation. Offered for \$49,900.

MANCHESTER - Seven rooms and 2 baths in this pleasant older home. Walk to restaurants, shopping, library, two parks, Senior Citizens Center. St. James School and bus line. Interior layout is good for an "in-law" situation. Offered for \$49,900.

MANCHESTER - Seven rooms and 2 baths in this pleasant older home. Walk to restaurants, shopping, library, two parks, Senior Citizens Center. St. James School and bus line. Interior layout is good for an "in-law" situation. Offered for \$49,900.

MANCHESTER - Seven rooms and 2 baths in this pleasant older home. Walk to restaurants, shopping, library, two parks, Senior Citizens Center. St. James School and bus line. Interior layout is good for an "in-law" situation. Offered for \$49,900.

MANCHESTER - Seven rooms and 2 baths in this pleasant older home. Walk to restaurants, shopping, library, two parks, Senior Citizens Center. St. James School and bus line. Interior layout is good for an "in-law" situation. Offered for \$49,900.

MANCHESTER - Seven rooms and 2 baths in this pleasant older home. Walk to restaurants, shopping, library, two parks, Senior Citizens Center. St. James School and bus line. Interior layout is good for an "in-law" situation. Offered for \$49,900.

RENTALS

THOMPSON HOUSE, furnished rooms, centrally located. Kitchen privileges. Parking. Reasonable rates. Phone 649-2358.

ROOMS for rent, clean, centrally located, parking, on bus line. Phone 647-9588.

LADIES ONLY - room for rent, furnished, reasonable rates and ideal location. Call after 5 p.m., 644-0383.

GENTLEMEN only - kitchen privileges, central location, free parking, references required. 643-2933 for appointment only.

COUPLES or singles wanted to share 5-room house over 21, no pets, no children, no lease. Call after 6 p.m., 643-5247.

LARGE Pleasant furnished room, central, quiet, immaculate, parking, mature gentlemen. Hot water, shower. 569-2525.

NEWLY FURNISHED room, on bus line, clean, convenient, good view. 646-6566.

FEMALE roommate, modern garden apartment, fully furnished, own bedroom, tennis, swimming. Call 872-2413 after 3.

WANTED - Career woman to share home, non-smoker, have own bedroom set, references. P.O. Box 2158, Vernon, Conn.

ELLINGTON - Pleasant room, private home, air-conditioned, kitchen privileges, \$20 weekly. References. Call 872-3148.

WE HAVE customers waiting for the rental of your apartment or home. J.D. Real Estate Associates, Inc. 646-1980.

LOOKING for apartments in real estate rental agency, multiple dwellings, no fees. Call J.D. Real Estate Associates, Inc. 646-1980.

3 1/2 ROOMS with heat, hot water, cooking gas, stove, refrigerator, wall-to-wall carpet, \$175. Centrally located, adults only. No pets. Security deposit required. Call 646-8278.

LARGE live room flat, first floor, Mr. Clean condition, 2 bedrooms, storage, park 2 cars. \$225 per month. Lease security deposit. Keith Real Estate, 646-1922, 646-4126.

MANCHESTER GARDENS - One or two bedroom apartments, in beautiful setting, walk to everything, \$164-\$184 monthly including heat, hot water and appliances. Superintendent, 646-0950. Equal housing.

CENTRAL - One-bedroom apartment on first floor. Modern bath and kitchen appliances. Security, \$175 monthly with heat. No pets. Hohenbush, Realtor, 646-1166.

VERNON - 3 1/2 room apartment with heat, electric stove, ceramic bath, combination windows, electric water heater, cabinet kitchen, close to shopping. Adults plus one child workable. Security deposit. Call between 8:30 p.m., 643-8256.

DELMONT STREET - Duplex, two bedrooms, 1 1/2 baths, appliances, no pets, security, available April 1st. Call days, 643-5144 ask for Jack.

SUB-LET for rooms, 1 1/2 baths, 2 bedrooms, carpeted, appliances and refrigerator. Call Jean Howat, 644-2543.

BOLTON-MANCHESTER town line, large three room apartment, stove, refrigerator, quiet neighborhood, references, \$185 monthly. 643-5983.

DELUXE ONE - bedroom apartment - Complete appliances, carpeting, air-conditioned, swimming pool. \$175 plus utilities. Robert D. Murdoch, Realtor, 643-2692.

MANCHESTER - New 3 bedroom Duplex, half of two-family 1 1/2 baths, full basement, includes appliances, \$275 per month. Paul W. Dougan Realtor, 646-1021 or 644-6335.

MANCHESTER - Deluxe 2-bedroom Townhouse, 1 1/2 baths, private entrance, patio and full basement. Includes heat, appliances and carpeting. \$265 per month. Paul W. Dougan, Realtor, 646-1021 or 644-6335.

ROCKVILLE 3 1/2 ROOMS - One and one-half bedroom apartment, heat, hot water, all appliances including dishwasher, disposal, carpeting, pool and your own private terrace in a country setting. Call 872-4223, 875-7466, 529-6516.

MANCHESTER - 2-family, completely remodeled, storage, yard, convenient location. No pets. Available March 22, \$225. 649-1677.

TWO BEDROOM apartment in 2-family, carpeting, appliances, parking, heat included, \$220 per month. Security deposit. Call 649-5608 after 6.

WANTED 2 bedroom apartment in duplex or 2-family. Have small child and small dog. Rent \$150 including utilities. 646-2009.

PRIVATE Gymnastics Studio building for a larger home in Bolton-Manchester vicinity. Needs at least a 40x80' area with 16' minimum ceiling height. Would consider a large barn. Call 669-3377 or 651-6511.

RETIRED COUPLE wants unfurnished 3-4 room heated apartment, Manchester, \$100 maximum. Call 643-8879 after 2.

WILLAGE APARTMENTS - Five-room townhouse apartment, 1 1/2 tiled baths, 2 air-conditioned, wall-to-wall carpeting, full basement, homelike atmosphere. Total electric, no pets, rentals \$180 per month. Please call 872-5258 Monday-Friday, 9 a.m. - 5 p.m., 649-7620.

RENOVATED first floor apartment, available March 15th, water, grounds maintenance and parking included for \$180 and \$185 per month. For more information, call 646-6555, Monday-Friday, 9-5. Workweek call 649-8887.

MANCHESTER - Nice one bedroom Townhouse, private entrance, and basement, patio, includes heat, appliances and carpeting, \$250 per month. Paul W. Dougan, Realtor, 646-1021 or 644-6335.

MANCHESTER - Family styled 2-bedroom Townhouse, good view, full basement and patio. Includes heat, all appliances and carpeting, \$250 per month. Paul W. Dougan, Realtor, 646-1021 or 644-6335.

MANCHESTER - Three bedroom Condominium, 2 1/2 baths, wall-to-wall carpeting and all appliances included. \$350 monthly plus utilities. Available March 1. Mr. Fioramano, 646-6555.

FOUR ROOM single house, Call Joey, Toland Auto, 646-1180.

EIGHT room, three bedroom Condominium, appliances, central air, 2 1/2 baths, porch, patio, beautiful large yard, full recreation area. Carpet, \$50 monthly plus utilities. Option to buy, 646-5391.

122 EAST CENTER STREET - Personal size first floor modern office. Merritt Agency, 646-1180.

EXCELLENT location, 500-1500 square feet, full kitchen, parking included. As low as \$75 per month. Call 649-5334, 643-7125.

BOLTON NOTCH, highway location across shopping center, 4,000 square feet building for professional offices or sales. Four acres industrial commercial, storage buildings. Phone, 1-223-4460.

700 SQUARE FOOT office in Vernon Professional Building, Route 83, \$275 monthly includes heat and air-conditioning in carpeted 2 1/2 room office with kitchenette. Call after 6 p.m., 644-2314.

OFFICE SPACE FOR RENT - 250 square feet, center of Manchester, air conditioning and parking. Call 643-8651.

STORE FOR rent, Best Main Street location. About 1,000 square feet. Same size basement. For information, Philbrick Agency, Realtors, 646-4200.

1,200 SQUARE FEET plus full basement in busy Colonial brick shopping center. Air-conditioned, plenty of parking. Ideal for ice cream shop, boutique, insurance office, doughnut shop etc. Mr. Belliere, 647-1413.

CONDOMINIUM in Killington, Vermont - 4 bedroom, 4 bathroom, wall to wall carpet thru out, all electrical appliances, including dishwasher and disposal. On access road to Killington Mountain. Available Sunday night thru Thursday night. Call 643-1181.

YOUNG COUPLE with dogs needs small house to rent in UConn area. Painting and light carpentry. Terms negotiable. Call 672-8257.

WANTED 2 bedroom apartment in duplex or 2-family. Have small child and small dog. Rent \$150 including utilities. 646-2009.

PRIVATE Gymnastics Studio building for a larger home in Bolton-Manchester vicinity. Needs at least a 40x80' area with 16' minimum ceiling height. Would consider a large barn. Call 669-3377 or 651-6511.

RETIRED COUPLE wants unfurnished 3-4 room heated apartment, Manchester, \$100 maximum. Call 643-8879 after 2.

WILLAGE APARTMENTS - Five-room townhouse apartment, 1 1/2 tiled baths, 2 air-conditioned, wall-to-wall carpeting, full basement, homelike atmosphere. Total electric, no pets, rentals \$180 per month. Please call 872-5258 Monday-Friday, 9 a.m. - 5 p.m., 649-7620.

RENOVATED first floor apartment, available March 15th, water, grounds maintenance and parking included for \$180 and \$185 per month. For more information, call 646-6555, Monday-Friday, 9-5. Workweek call 649-8887.

MANCHESTER - Nice one bedroom Townhouse, private entrance, and basement, patio, includes heat, appliances and carpeting, \$250 per month. Paul W. Dougan, Realtor, 646-1021 or 644-6335.

MANCHESTER - Family styled 2-bedroom Townhouse, good view, full basement and patio. Includes heat, all appliances and carpeting, \$250 per month. Paul W. Dougan, Realtor, 646-1021 or 644-6335.

MANCHESTER - Three bedroom Condominium, 2 1/2 baths, wall-to-wall carpeting and all appliances included. \$350 monthly plus utilities. Available March 1. Mr. Fioramano, 646-6555.

FOUR ROOM single house, Call Joey, Toland Auto, 646-1180.

EIGHT room, three bedroom Condominium, appliances, central air, 2 1/2 baths, porch, patio, beautiful large yard, full recreation area. Carpet, \$50 monthly plus utilities. Option to buy, 646-5391.

122 EAST CENTER STREET - Personal size first floor modern office. Merritt Agency, 646-1180.

EXCELLENT location, 500-1500 square feet, full kitchen, parking included. As low as \$75 per month. Call 649-5334, 643-7125.

BOLTON NOTCH, highway location across shopping center, 4,000 square feet building for professional offices or sales. Four acres industrial commercial, storage buildings. Phone, 1-223-4460.

700 SQUARE FOOT office in Vernon Professional Building, Route 83, \$275 monthly includes heat and air-conditioning in carpeted 2 1/2 room office with kitchenette. Call after 6 p.m., 644-2314.

OFFICE SPACE FOR RENT - 250 square feet, center of Manchester, air conditioning and parking. Call 643-8651.

STORE FOR rent, Best Main Street location. About 1,000 square feet. Same size basement. For information, Philbrick Agency, Realtors, 646-4200.

1,200 SQUARE FEET plus full basement in busy Colonial brick shopping center. Air-conditioned, plenty of parking. Ideal for ice cream shop, boutique, insurance office, doughnut shop etc. Mr. Belliere, 647-1413.

CONDOMINIUM in Killington, Vermont - 4 bedroom, 4 bathroom, wall to wall carpet thru out, all electrical appliances, including dishwasher and disposal. On access road to Killington Mountain. Available Sunday night thru Thursday night. Call 643-1181.

YOUNG COUPLE with dogs needs small house to rent in UConn area. Painting and light carpentry. Terms negotiable. Call 672-8257.

WANTED 2 bedroom apartment in duplex or 2-family. Have small child and small dog. Rent \$150 including utilities. 646-2009.

PRIVATE Gymnastics Studio building for a larger home in Bolton-Manchester vicinity. Needs at least a 40x80' area with 16' minimum ceiling height. Would consider a large barn. Call 669-3377 or 651-6511.

RETIRED COUPLE wants unfurnished 3-4 room heated apartment, Manchester, \$100 maximum. Call 643-8879 after 2.

WILLAGE APARTMENTS - Five-room townhouse apartment, 1 1/2 tiled baths, 2 air-conditioned, wall-to-wall carpeting, full basement, homelike atmosphere. Total electric, no pets, rentals \$180 per month. Please call 872-5258 Monday-Friday, 9 a.m. - 5 p.m., 649-7620.

RENOVATED first floor apartment, available March 15th, water, grounds maintenance and parking included for \$180 and \$185 per month. For more information, call 646-6555, Monday-Friday, 9-5. Workweek call 649-8887.

MANCHESTER - Nice one bedroom Townhouse, private entrance, and basement, patio, includes heat, appliances and carpeting, \$250 per month. Paul W. Dougan, Realtor, 646-1021 or 644-6335.

MANCHESTER - Family styled 2-bedroom Townhouse, good view, full basement and patio. Includes heat, all appliances and carpeting, \$250 per month. Paul W. Dougan, Realtor, 646-1021 or 644-6335.

MANCHESTER - Three bedroom Condominium, 2 1/2 baths, wall-to-wall carpeting and all appliances included. \$350 monthly plus utilities. Available March 1. Mr. Fioramano, 646-6555.

FOUR ROOM single house, Call Joey, Toland Auto, 646-1180.

EIGHT room, three bedroom Condominium, appliances, central air, 2 1/2 baths, porch, patio, beautiful large yard, full recreation area. Carpet, \$50 monthly plus utilities. Option to buy, 646-5391.

122 EAST CENTER STREET - Personal size first floor modern office. Merritt Agency, 646-1180.

EXCELLENT location, 500-1500 square feet, full kitchen, parking included. As low as \$75 per month. Call 649-5334, 643-7125.

BOLTON NOTCH, highway location across shopping center, 4,000 square feet building for professional offices or sales. Four acres industrial commercial, storage buildings. Phone, 1-223-4460.

700 SQUARE FOOT office in Vernon Professional Building, Route 83, \$275 monthly includes heat and air-conditioning in carpeted 2 1/2 room office with kitchenette. Call after 6 p.m., 644-2314.

OFFICE SPACE FOR RENT - 250 square feet, center of Manchester, air conditioning and parking. Call 643-8651.

STORE FOR rent, Best Main Street location. About 1,000 square feet. Same size basement. For information, Philbrick Agency, Realtors, 646-4200.

1,200 SQUARE FEET plus full basement in busy Colonial brick shopping center. Air-conditioned, plenty of parking. Ideal for ice cream shop, boutique, insurance office, doughnut shop etc. Mr. Belliere, 647-1413.

CONDOMINIUM in Killington, Vermont - 4 bedroom, 4 bathroom, wall to wall carpet thru out, all electrical appliances, including dishwasher and disposal. On access road to Killington Mountain. Available Sunday night thru Thursday night. Call 643-1181.

YOUNG COUPLE with dogs needs small house to rent in UConn area. Painting and light carpentry. Terms negotiable. Call 672-8257.

WANTED 2 bedroom apartment in duplex or 2-family. Have small child and small dog. Rent \$150 including utilities. 646-2009.

PRIVATE Gymnastics Studio building for a larger home in Bolton-Manchester vicinity. Needs at least a 40x80' area with 16' minimum ceiling height. Would consider a large barn. Call 669-3377 or 651-6511.

RETIRED COUPLE wants unfurnished 3-4 room heated apartment, Manchester, \$100 maximum. Call 643-8879 after 2.

WILLAGE APARTMENTS - Five-room townhouse apartment, 1 1/2 tiled baths, 2 air-conditioned, wall-to-wall carpeting, full basement, homelike atmosphere. Total electric, no pets, rentals \$180 per month. Please call 872-5258 Monday-Friday, 9 a.m. - 5 p.m., 649-7620.

RENOVATED first floor apartment, available March 15th, water, grounds maintenance and parking included for \$180 and \$185 per month. For more information, call 646-6555, Monday-Friday, 9-5. Workweek call 649-8887.

MANCHESTER - Nice one bedroom Townhouse, private entrance, and basement, patio, includes heat, appliances and carpeting, \$250 per month. Paul W. Dougan, Realtor, 646-1021 or 644-6335.

MANCHESTER - Family styled 2-bedroom Townhouse, good view, full basement and patio. Includes heat, all appliances and carpeting, \$250 per month. Paul W. Dougan, Realtor, 646-1021 or 644-6335.

MANCHESTER - Three bedroom Condominium, 2 1/2 baths, wall-to-wall carpeting and all appliances included. \$350 monthly plus utilities. Available March 1. Mr. Fioramano, 646-6555.

FOUR ROOM single house, Call Joey, Toland Auto, 646-1180.

EIGHT room, three bedroom Condominium, appliances, central air, 2 1/2 baths, porch, patio, beautiful large yard, full recreation area. Carpet, \$50 monthly plus utilities. Option to buy, 646-5391.

122 EAST CENTER STREET - Personal size first floor modern office. Merritt Agency, 646-1180.

EXCELLENT location, 500-1500 square feet, full kitchen, parking included. As low as \$75 per month. Call 649-5334, 643-7125.

BOLTON NOTCH, highway location across shopping center, 4,000 square feet building for professional offices or sales. Four acres industrial commercial, storage buildings. Phone, 1-223-4460.

700 SQUARE FOOT office in Vernon Professional Building, Route 83, \$275 monthly includes heat and air-conditioning in carpeted 2 1/2 room office with kitchenette. Call after 6 p.m., 644-2314.

OFFICE SPACE FOR RENT - 250 square feet, center of Manchester, air conditioning and parking. Call 643-8651.

STORE FOR rent, Best Main Street location. About 1,000 square feet. Same size basement. For information, Philbrick Agency, Realtors, 646-4200.

1,200 SQUARE FEET plus full basement in busy Colonial brick shopping center. Air-conditioned, plenty of parking. Ideal for ice cream shop, boutique, insurance office, doughnut shop etc. Mr. Belliere, 647-1413.

CONDOMINIUM in Killington, Vermont - 4 bedroom, 4 bathroom, wall to wall carpet thru out, all electrical appliances, including dishwasher and disposal. On access road to Killington Mountain. Available Sunday night thru Thursday night. Call 643-1181.

YOUNG COUPLE with dogs needs small house to rent in UConn area. Painting and light carpentry. Terms negotiable. Call 672-8257.

WANTED 2 bedroom apartment in duplex or 2-family. Have small child and small dog. Rent \$150 including utilities. 646-2009.

PRIVATE Gymnastics Studio building for a larger home in Bolton-Manchester vicinity. Needs at least a 40x80' area with 16' minimum ceiling height. Would consider a large barn. Call 669-3377 or 651-6511.

RETIRED COUPLE wants unfurnished 3-4 room heated apartment, Manchester, \$100 maximum. Call 643-8879 after 2.

WILLAGE APARTMENTS - Five-room townhouse apartment, 1 1/2 tiled baths, 2 air-conditioned, wall-to-wall carpeting, full basement, homelike atmosphere. Total electric, no pets, rentals \$180 per month. Please call 872-5258 Monday-Friday, 9 a.m. - 5 p.m., 649-7620.

RENOVATED first floor apartment, available March 15th, water, grounds maintenance and parking included for \$180 and \$185 per month. For more information, call 646-6555, Monday-Friday, 9-5. Workweek call 649-8887.

MANCHESTER - Nice one bedroom Townhouse, private entrance, and basement, patio, includes heat, appliances and carpeting, \$250 per month. Paul W. Dougan, Realtor, 646-1021 or 644-6335.

MANCHESTER - Family styled 2-bedroom Townhouse, good view, full basement and patio. Includes heat, all appliances and carpeting, \$250 per month. Paul W. Dougan, Realtor, 646-1021 or 644-6335.

MANCHESTER - Three bedroom Condominium, 2 1/2 baths, wall-to-wall carpeting and all appliances included. \$350 monthly plus utilities. Available March 1. Mr. Fioramano, 646-6555.

FOUR ROOM single house, Call Joey, Toland Auto, 646-1180.

EIGHT room, three bedroom Condominium, appliances, central air, 2 1/2 baths, porch, patio, beautiful large yard, full recreation area. Carpet, \$50 monthly plus utilities. Option to buy, 646-5391.

122 EAST CENTER STREET - Personal size first floor modern office. Merritt Agency, 646-1180.

EXCELLENT location, 500-1500 square feet, full kitchen, parking included. As low as \$75 per month. Call 649-5334, 643-7125.

BOLTON NOTCH, highway location across shopping center, 4,000 square feet building for professional offices or sales. Four acres industrial commercial, storage buildings. Phone, 1-223-4460.

700 SQUARE FOOT office in Vernon Professional Building, Route 83, \$275 monthly includes heat and air-conditioning in carpeted 2 1/2 room office with kitchenette. Call after 6 p.m., 644-2314.

OFFICE SPACE FOR RENT - 250 square feet, center of Manchester, air conditioning and parking. Call 643-8651.

STORE FOR rent, Best Main Street location. About 1,000 square feet. Same size basement. For information, Philbrick Agency, Realtors, 646-4200.

1,200 SQUARE FEET plus full basement in busy Colonial brick shopping center. Air-conditioned, plenty of parking. Ideal for ice cream shop, boutique, insurance office, doughnut shop etc. Mr. Belliere, 647-1413.

CONDOMINIUM in Killington, Vermont - 4 bedroom, 4 bathroom, wall to wall carpet thru out, all electrical appliances, including dishwasher and disposal. On access road to Killington Mountain. Available Sunday night thru Thursday night. Call 643-1181.

YOUNG COUPLE with dogs needs small house to rent in UConn area. Painting and light carpentry. Terms negotiable. Call 672-8257.

WANTED 2 bedroom apartment in duplex or 2-family. Have small child and small dog. Rent \$150 including utilities. 646-2009.

PRIVATE Gymnastics Studio building for a larger home in Bolton-Manchester vicinity. Needs at least a 40x80' area with 16' minimum ceiling height. Would consider a large barn. Call 669-3377 or 651-6511.

RETIRED COUPLE wants unfurnished 3-4 room heated apartment, Manchester, \$100 maximum. Call 643-8879 after 2.

WILLAGE APARTMENTS - Five-room townhouse apartment, 1 1/2 tiled baths, 2 air-conditioned, wall-to-wall carpeting, full basement, homelike atmosphere. Total electric, no pets, rentals \$180 per month. Please call 872-5258 Monday-Friday, 9 a.m. - 5 p.m., 649-7620.

RENOVATED first floor apartment, available March 15th, water, grounds maintenance and parking included for \$180 and \$185 per month. For more information, call 646-6555, Monday-Friday, 9-5. Workweek call 649-8887.

MANCHESTER - Nice one bedroom Townhouse, private entrance, and basement, patio, includes heat, appliances and carpeting, \$250 per month. Paul W. Dougan, Realtor, 646-1021 or 644-6335.

MANCHESTER - Family styled 2-bedroom Townhouse, good view, full basement and patio. Includes heat, all appliances and carpeting, \$250 per month. Paul W. Dougan, Realtor, 646-1021 or 644-6335.

MANCHESTER - Three bedroom Condominium, 2 1/2 baths, wall-to-wall carpeting and all appliances included. \$350 monthly plus utilities. Available March 1. Mr. Fioramano, 646-6555.

FOUR ROOM single house, Call Joey, Toland Auto, 646-1180.

EIGHT room, three bedroom Condominium, appliances, central air, 2 1/2 baths, porch, patio, beautiful large yard, full recreation area. Carpet, \$50 monthly plus utilities. Option to buy, 646-5391.

122 EAST CENTER STREET - Personal size first floor modern office. Merritt Agency, 646-1180.

EXCELLENT location, 500-1500 square feet, full kitchen, parking included. As low as \$75 per month. Call 649-5334, 643-7125.

BOLTON NOTCH, highway location across shopping center, 4,000 square feet building for professional offices or sales. Four acres industrial commercial, storage buildings. Phone, 1-223-4460.

700 SQUARE FOOT office in Vernon Professional Building, Route 83, \$275 monthly includes heat and air-conditioning in carpeted 2 1/2 room office with kitchenette. Call after 6 p.m., 644-2314.

OFFICE SPACE FOR RENT - 250 square feet, center of Manchester, air conditioning and parking. Call 643-8651.

STORE FOR rent, Best Main Street location. About 1,000 square feet. Same size basement. For information, Philbrick Agency, Realtors, 646-4200.

1,200 SQUARE FEET plus full basement in busy Colonial brick shopping center. Air-conditioned, plenty of parking. Ideal for ice cream shop, boutique, insurance office, doughnut shop etc. Mr. Belliere, 647-1413.

CONDOMINIUM in Killington, Vermont - 4 bedroom, 4 bathroom, wall to wall carpet thru out, all electrical appliances, including dishwasher and disposal. On access road to Killington Mountain. Available Sunday night thru Thursday night. Call 643-1181.

YOUNG COUPLE with dogs needs small house to rent in UConn area. Painting and light carpentry. Terms negotiable. Call 672-8257.

WANTED 2 bedroom apartment in duplex or 2-family. Have small child and small dog. Rent \$150 including utilities. 646-2009.

PRIVATE Gymnastics Studio building for a larger home in Bolton-Manchester vicinity. Needs at least a 40x80' area with 16' minimum ceiling height. Would consider a large barn. Call 669-3377 or 651-6511.

RETIRED COUPLE wants unfurnished 3-4 room heated apartment, Manchester, \$100 maximum. Call 643-8879 after 2.

WILLAGE APARTMENTS - Five-room townhouse apartment, 1 1/2 tiled baths, 2 air-conditioned, wall-to-wall carpeting, full basement, homelike atmosphere. Total electric, no pets, rentals \$180 per month. Please call 872-5258 Monday-Friday, 9 a.m. - 5 p.m., 649-7620.

RENOVATED first floor apartment, available March 15th, water, grounds maintenance and parking included for \$1



ABOUT TOWN

Young Women's Fellowship of the Salvation Army will meet tonight at 7:30 at the Citadel. Jane Bell is hostess.

Directors Okay Plea for Funds

The Board of Directors Tuesday night authorized a Manchester application for a supplementary grant under the federal Housing and Community Development Act. The sum is in addition to a \$301,000 block grant tentatively promised Manchester. It would come from a special \$500,000 discretionary fund established for the whole of Connecticut. The \$301,000 block grant set aside for Manchester originally was expected to be \$470,000. However, when HUD (the department of Housing and Urban Development) rechecked the formula it had used to determine the size of the grant, it found an error in computation. The lowered (\$301,000) figure resulted. Meetings between town and HUD officials haven't changed the town situation. Under the latest \$300,000 application, \$100,000 is for establishing a revolving fund for rehabilitation of downtown housing and \$200,000 for sewer improvements downtown. In other actions Tuesday night (all unanimous) the board approved: A \$68,103 appropriation for the Head Start program, to be financed by an equivalent federal grant. It is for 180 schools days in the period Jan. 1 to Dec. 31, 1975. The Head Start Program, now in its eighth year, involves 72 pupils. A \$6,563 appropriation to the school board's Work Incentive Program, to be financed by an equivalent state grant. It is a year's cost for hiring an unemployed Manchester resident as a maintenance man. A \$1,214 appropriation to the Social Services Account, to be financed from 1973-74 General Fund surplus. It is for three-months' salary (to June 30) for a social services clerk working under ECA (Emergency Employment Act) funds. Town Manager Robert Weiss said he will recommend keeping the position next year and funding for it in the 1975-76 General Fund budget. An extension of the newwalk construction contract (at the same price as when granted two years ago) with Aleria & Sons of East Hartford.

Round Table Singers Plan Fund-Raisers

The Round Table Singers of Manchester High School have been invited for a second time to represent our town in a singing tour of Hawaii this spring. The group, directed by Martha White, will be performing for schools, civic organizations and is scheduled for a TV appearance on Kona. To help defray the cost of the tour, the group has scheduled the following events: Friday—Dance, featuring the "Nifty-Fifty Boys" at the Teen Center from 8 to 11:30 p.m. Saturday—Bean supper in the school cafeteria with sitings at 5:30 and 7 p.m. April 5—Tag sale at Center Congregational Church, 10 a.m. to 3 p.m. There will be a raffle drawing at the tag sale at 11 a.m. Raffle tickets may be purchased from most Round Table Singers, any of their parents, or at the door of any of the above events. The group, directed by Martha White, will be performing for schools, civic organizations and is scheduled for a TV appearance on Kona. To help defray the cost of the tour, the group has scheduled the following events: Friday—Dance, featuring the "Nifty-Fifty Boys" at the Teen Center from 8 to 11:30 p.m. Saturday—Bean supper in the school cafeteria with sitings at 5:30 and 7 p.m. April 5—Tag sale at Center Congregational Church, 10 a.m. to 3 p.m. There will be a raffle drawing at the tag sale at 11 a.m. Raffle tickets may be purchased from most Round Table Singers, any of their parents, or at the door of any of the above events.

Fire Calls

MANCHESTER Wednesday, 3:38 p.m.—False alarm from Town Box 139. TOLLAND COUNTY Wednesday, 2:32 p.m.—Chimney fire on Lower Butcher Rd., Ellington. Wednesday, 7:59 p.m.—Structure fire on Regan Rd., Vernon. Vernon Fire Department was assisted by Rockville aerial ladder, and Rockville and Tolland sent standby pumpers.

Concert Slated in Glastonbury

The Fairfield University Glee Club will present a concert Friday at 8:30 p.m. at Glastonbury High School. The event is sponsored by St. Dunstan's Church. The program will include religious selections as well as a medley of songs by The Beatles, and a medley of numbers from "Godspell." Tickets are available by calling 649-3004, or 646-1591. They will also be available at the door.

Caldwell To Appear At Democrats Party

State Comptroller J. Edward Caldwell, the Bridgeport Democrat who succeeded Nathan Agostinelli in the state post, will attend Saturday's fourth annual dinner-dance by the Democratic Club of Manchester. It will be at the K of C Home, Main St., with about 200 persons expected and is a complete sell-out. A highlight of the evening will be installation of new officers, with Irene LaMay succeeding James Holmes as president. Caldwell, 47, served eight consecutive terms as state senator before being elected state comptroller. He was majority leader of the State Senate in 1971-72 and was its minority leader 1973-74. He is an attorney.

MANCHESTER HOSPITAL NOTES

Discharged Tuesday: Ann Eaton, Bear Swamp Rd., Andover; Theresa Hayden, 34 Flower St.; Tilly Maturio, 120 Bolton St.; Jan Gurewicz, 52 North St.; Evelyn Florence, 29 Cottage St.; Michael Brennan, 107 Overbrook Dr.; Vernon; Hilda Gerlach, N. River Rd., Coventry; Matilda Peila, 174 Eldridge St. Grace Nelson, East Hartford; Ruth Milligan, Broad Brook; Alice Gadsoury, Storrs; Linda Luby, Eric Dr., Coventry; Robert Fish, 68C Ambassador Dr.; Everett Dickinson, East Hartford; Lanelle Bouchard, Glastonbury; Sheryl Western, 470 Woodbridge St.; Ginger Howard, 4 Bolton Center Rd.; Jerilyn Gordon, 46 Wetherell St.; Marjorie Lamesa, 33 Maple St.

Gives Orders

PORTLAND VALLEY, Calif. (UPI) — Retired Army Col. Lewis Day, 74, is so impressive in giving orders that even burglars obey him. When Day and his wife returned home, they were confronted by a six-foot intruder who pointed the officer's 22-caliber rifle at him. "Give me that gun and get the hell out of here," Day said. The intruder took off out the front door. The officer then found two more men in his bathroom. He barked similar orders. The pair jumped out the window. Day had an added reason for his confidence. The rifle, he said, "can't be fired—I have it fixed so only I can make it work."

WRITING AWARDS

HOLLYWOOD (UPI) — Author James Michener will present the writing awards on the 47th Annual Academy Award presentations April 8.

POLICE REPORT

MANCHESTER In other Manchester Police reports: Michael McCallister, 16, of 275 Oakland St. was taken into custody Wednesday on charges of third-degree burglary and third-degree larceny. Manchester Police reported. Police said the charges stem from a recent break into a Downey Dr. residence and theft of several tools. In another Wednesday arrest, William E. Starr, 31, of East Hartford was charged with third-degree burglary and fourth-degree larceny in connection with a recent break at a High St. home. Both McCallister and Starr were presented in the Court of Common Pleas at East Hartford Wednesday, where each was released on a \$50 bond for court appearance March 21.

"DECORATING TIPS For The Homeowner"

Dear Homeowner... Remember, in selecting a wallcovering, it is supposed to be fun, not a chore. If you looked at so many patterns that you're feeling confused, take a break. Take some of our books home. That's your chance to look at a pattern you like; right in the room where you plan to use it. If you still are confused, let our competent staff help you select your pattern... Sincerely, "Your Complete Decorating Center" Paul's Paint 615 Main Street Manchester, Conn. PHONE 643-5200

frame factory DO-IT-YOURSELF PICTURE FRAMING We cut the molding and the glass, then help you with everything else. The right tools make the job easy—and you get professional results! Fine Art Prints from the New York Geographic Society LAPP PLAZA Route 83, Vernon (12 miles north of Vernon Circle) Phone 872-8022

Manchester Evening Herald

MANCHESTER, CONN., FRIDAY, MARCH 14, 1975 — VOL. XXIV, No. 139

Manchester—A City of Village Charm

TWENTY-FOUR PAGES

PRICE: FIFTEEN CENTS



Out of Chaos, Eventually Order

What looks like disorganized activity on the stage at Manchester High School will be an organized, choreographed and costumed performance of "My Fair Lady" on April 4, 5 and 11, 12 in Bailey Auditorium. Martha White, the school's music director, is seen at far right as she directs the dance in one of the scenes. This is what visitors saw as they attended scheduled phases of training in musical theater in observance of the first national "Music in Our Schools Day." (Herald photo by Pinto)

NEWS CAPSULES

Senate Panel May Raise Tax Cut to \$31 Billion

WASHINGTON (UPI) — The Senate Finance Committee appears headed for approval of tax cuts in excess of \$31 billion including forgiveness of up to \$2,000 in income taxes for those who buy homes between April 1 and Dec. 31 this year.

Blames Hanoi

WASHINGTON (UPI) — The years of retirement have not changed Gen. William C. Westmoreland's strategies for fighting in Vietnam. Westmoreland, commander of U.S. troops during the 1960s and Army chief of staff, emerged from a meeting with President Ford Thursday and told reporters, "the culprit in this whole thing is Hanoi," that the North Vietnamese were responsible for heavy fighting in both Cambodia and South Vietnam.

Examine Hearst Hideaway

SOUTH CANAAN, Pa. (UPI) — Fugitive Patricia Hearst and several members of the Symbiote Liberation Army apparently hid for several months last fall in a shabby, rundown farmhouse in rural northeastern Pennsylvania. Local residents said Thursday the FBI has examined the two-story house on a rutted dirt road between Honesdale and Carbondale.

Oil Profits High

WASHINGTON (UPI) — The major U.S. oil companies will reap a minimum of \$4.4 billion in profits this year — mostly from price increases. Two opponents of the oil depletion allowance say these figures refute arguments that eliminating the tax break will reduce incentives to increase production.

Loyalty Pledge Circulated

WASHINGTON (UPI) — A loyalty pledge approved by both the White House and Vice President Nelson Rockefeller is being circulated among Republicans in a bid to head off a possible conservative third party. House GOP leader John Rhodes and Rep. John Anderson, chairman of the House GOP Conference, told a news conference Thursday 111 House members and at least 20 of the Senate's 88 Republicans signed the "expression of approval" of President Ford and a pledge "to work within the party." It was also sent to GOP governors and state chairmen.

Sales Tax Hiked To 7 Per Cent April 1

HARTFORD (UPI) — Connecticut consumers will be paying the nation's highest state sales tax April 1 when a 7 per cent levy, approved by the Democratic-controlled legislature, is due to go into effect.

Although Gov. Ella T. Grasso said she was opposed to the tax, she said she will sign the measure which Democratic majority leaders sought to help reduce a projected \$90 million deficit by some \$18 million. Barely had the lawmakers approved the increase Thursday when state Tax Commissioner Gerald J. Heffernan announced rate cards for the 7 per cent levy were being printed up for distribution next week. He said the cards will be mailed along with regular sales tax return cards sent to merchants throughout the state.

The Weather

Connecticut forecast: Heavy snow warnings in effect for tonight, with light warnings displayed along the coast. Snow becoming heavy tonight with accumulations of six inches or more before ending Saturday. Lows tonight in the upper 20s and high Saturday upper 30s. Chance of precipitation 100 per cent tonight and 60 per cent Saturday.

Egypt's Concrete Ideas Presented to Israelis

JERUSALEM (UPI) — Secretary of State Henry A. Kissinger brought concrete Egyptian ideas for a Middle East peace settlement to Israel today and began to push for an Israeli decision on how much Sinai Desert territory it will yield. A senior official aboard the plane carrying Kissinger from Aswan, Egypt, this morning did not specifically mention a possible Israeli return of the Sinai mountain passes and Abu Rudeis oil fields, seized by Israel in the 1967 Middle East war. The official said, however, he believed an Israeli response would be necessary to keep the negotiations going when Kissinger flies back to Aswan to see Egyptian President Anwar Sadat Monday. The official said he believed it was time for Israel to make a decision on moving beyond the official cabinet proposal for a withdrawal short of the oil fields and the strategic Sinai passes that are a cornerstone of Israel's defensive perimeter. Prime Minister Yitzhak Rabin has said Israel will give up the passes and oil fields in return for a direct pledge to end the state of war — a key point in the present shut negotiations which Kissinger is conducting between Egypt and Israel. Neither Kissinger nor other American officials disclosed the "concrete ideas" Kissinger was bringing from Sadat, but they did say the secretary expected to take back something equally concrete. The Israeli cabinet is meeting Sunday. "We are making progress slowly and I hope we can come to agreement, but that is far from guaranteed," Kissinger said on his plane flying from Aswan to Israel. Kissinger reported Thursday that Sadat had come up with "concrete ideas" for him to relay to Israel, but the senior official would have gone to those making more than \$20,000. Other increase attempts were expected. Two other major tentative decisions were made by the committee Thursday. One and moderate income families with children and give a bigger break than the House bill to middle income persons who itemize deductions. This proposal, by Finance Committee chairman Russell Long, D-La., said the committee probably would approve a bill in excess of \$31.5 billion and he expected the Senate to act more when it reached the floor. However, most of the increases apparently will be in 1975 tax cuts. The committee Thursday rejected a move to increase the maximum 1974 tax rebate from \$200 to \$500. All of the rebate increase would have gone to those making more than \$20,000. Other increase attempts were expected. Two other major tentative decisions were made by the committee Thursday. One and moderate income families with children and give a bigger break than the House bill to middle income persons who itemize deductions. This proposal, by Finance Committee chairman Russell Long, D-La., said the committee probably would approve a bill in excess of \$31.5 billion and he expected the Senate to act more when it reached the floor. However, most of the increases apparently will be in 1975 tax cuts. The committee Thursday rejected a move to increase the maximum 1974 tax rebate from \$200 to \$500. All of the rebate increase would have gone to those making more than \$20,000. Other increase attempts were expected. Two other major tentative decisions were made by the committee Thursday. One and moderate income families with children and give a bigger break than the House bill to middle income persons who itemize deductions. This proposal, by Finance Committee chairman Russell Long, D-La., said the committee probably would approve a bill in excess of \$31.5 billion and he expected the Senate to act more when it reached the floor. However, most of the increases apparently will be in 1975 tax cuts. The committee Thursday rejected a move to increase the maximum 1974 tax rebate from \$200 to \$500. All of the rebate increase would have gone to those making more than \$20,000. Other increase attempts were expected. Two other major tentative decisions were made by the committee Thursday. One and moderate income families with children and give a bigger break than the House bill to middle income persons who itemize deductions. This proposal, by Finance Committee chairman Russell Long, D-La., said the committee probably would approve a bill in excess of \$31.5 billion and he expected the Senate to act more when it reached the floor. However, most of the increases apparently will be in 1975 tax cuts. The committee Thursday rejected a move to increase the maximum 1974 tax rebate from \$200 to \$500. All of the rebate increase would have gone to those making more than \$20,000. Other increase attempts were expected. Two other major tentative decisions were made by the committee Thursday. One and moderate income families with children and give a bigger break than the House bill to middle income persons who itemize deductions. This proposal, by Finance Committee chairman Russell Long, D-La., said the committee probably would approve a bill in excess of \$31.5 billion and he expected the Senate to act more when it reached the floor. However, most of the increases apparently will be in 1975 tax cuts. The committee Thursday rejected a move to increase the maximum 1974 tax rebate from \$200 to \$500. All of the rebate increase would have gone to those making more than \$20,000. Other increase attempts were expected. Two other major tentative decisions were made by the committee Thursday. One and moderate income families with children and give a bigger break than the House bill to middle income persons who itemize deductions. This proposal, by Finance Committee chairman Russell Long, D-La., said the committee probably would approve a bill in excess of \$31.5 billion and he expected the Senate to act more when it reached the floor. However, most of the increases apparently will be in 1975 tax cuts. The committee Thursday rejected a move to increase the maximum 1974 tax rebate from \$200 to \$500. All of the rebate increase would have gone to those making more than \$20,000. Other increase attempts were expected. Two other major tentative decisions were made by the committee Thursday. One and moderate income families with children and give a bigger break than the House bill to middle income persons who itemize deductions. This proposal, by Finance Committee chairman Russell Long, D-La., said the committee probably would approve a bill in excess of \$31.5 billion and he expected the Senate to act more when it reached the floor. However, most of the increases apparently will be in 1975 tax cuts. The committee Thursday rejected a move to increase the maximum 1974 tax rebate from \$200 to \$500. All of the rebate increase would have gone to those making more than \$20,000. Other increase attempts were expected. Two other major tentative decisions were made by the committee Thursday. One and moderate income families with children and give a bigger break than the House bill to middle income persons who itemize deductions. This proposal, by Finance Committee chairman Russell Long, D-La., said the committee probably would approve a bill in excess of \$31.5 billion and he expected the Senate to act more when it reached the floor. However, most of the increases apparently will be in 1975 tax cuts. The committee Thursday rejected a move to increase the maximum 1974 tax rebate from \$200 to \$500. All of the rebate increase would have gone to those making more than \$20,000. Other increase attempts were expected. Two other major tentative decisions were made by the committee Thursday. One and moderate income families with children and give a bigger break than the House bill to middle income persons who itemize deductions. This proposal, by Finance Committee chairman Russell Long, D-La., said the committee probably would approve a bill in excess of \$31.5 billion and he expected the Senate to act more when it reached the floor. However, most of the increases apparently will be in 1975 tax cuts. The committee Thursday rejected a move to increase the maximum 1974 tax rebate from \$200 to \$500. All of the rebate increase would have gone to those making more than \$20,000. Other increase attempts were expected. Two other major tentative decisions were made by the committee Thursday. One and moderate income families with children and give a bigger break than the House bill to middle income persons who itemize deductions. This proposal, by Finance Committee chairman Russell Long, D-La., said the committee probably would approve a bill in excess of \$31.5 billion and he expected the Senate to act more when it reached the floor. However, most of the increases apparently will be in 1975 tax cuts. The committee Thursday rejected a move to increase the maximum 1974 tax rebate from \$200 to \$500. All of the rebate increase would have gone to those making more than \$20,000. Other increase attempts were expected. Two other major tentative decisions were made by the committee Thursday. One and moderate income families with children and give a bigger break than the House bill to middle income persons who itemize deductions. This proposal, by Finance Committee chairman Russell Long, D-La., said the committee probably would approve a bill in excess of \$31.5 billion and he expected the Senate to act more when it reached the floor. However, most of the increases apparently will be in 1975 tax cuts. The committee Thursday rejected a move to increase the maximum 1974 tax rebate from \$200 to \$500. All of the rebate increase would have gone to those making more than \$20,000. Other increase attempts were expected. Two other major tentative decisions were made by the committee Thursday. One and moderate income families with children and give a bigger break than the House bill to middle income persons who itemize deductions. This proposal, by Finance Committee chairman Russell Long, D-La., said the committee probably would approve a bill in excess of \$31.5 billion and he expected the Senate to act more when it reached the floor. However, most of the increases apparently will be in 1975 tax cuts. The committee Thursday rejected a move to increase the maximum 1974 tax rebate from \$200 to \$500. All of the rebate increase would have gone to those making more than \$20,000. Other increase attempts were expected. Two other major tentative decisions were made by the committee Thursday. One and moderate income families with children and give a bigger break than the House bill to middle income persons who itemize deductions. This proposal, by Finance Committee chairman Russell Long, D-La., said the committee probably would approve a bill in excess of \$31.5 billion and he expected the Senate to act more when it reached the floor. However, most of the increases apparently will be in 1975 tax cuts. The committee Thursday rejected a move to increase the maximum 1974 tax rebate from \$200 to \$500. All of the rebate increase would have gone to those making more than \$20,000. Other increase attempts were expected. Two other major tentative decisions were made by the committee Thursday. One and moderate income families with children and give a bigger break than the House bill to middle income persons who itemize deductions. This proposal, by Finance Committee chairman Russell Long, D-La., said the committee probably would approve a bill in excess of \$31.5 billion and he expected the Senate to act more when it reached the floor. However, most of the increases apparently will be in 1975 tax cuts. The committee Thursday rejected a move to increase the maximum 1974 tax rebate from \$200 to \$500. All of the rebate increase would have gone to those making more than \$20,000. Other increase attempts were expected. Two other major tentative decisions were made by the committee Thursday. One and moderate income families with children and give a bigger break than the House bill to middle income persons who itemize deductions. This proposal, by Finance Committee chairman Russell Long, D-La., said the committee probably would approve a bill in excess of \$31.5 billion and he expected the Senate to act more when it reached the floor. However, most of the increases apparently will be in 1975 tax cuts. The committee Thursday rejected a move to increase the maximum 1974 tax rebate from \$200 to \$500. All of the rebate increase would have gone to those making more than \$20,000. Other increase attempts were expected. Two other major tentative decisions were made by the committee Thursday. One and moderate income families with children and give a bigger break than the House bill to middle income persons who itemize deductions. This proposal, by Finance Committee chairman Russell Long, D-La., said the committee probably would approve a bill in excess of \$31.5 billion and he expected the Senate to act more when it reached the floor. However, most of the increases apparently will be in 1975 tax cuts. The committee Thursday rejected a move to increase the maximum 1974 tax rebate from \$200 to \$500. All of the rebate increase would have gone to those making more than \$20,000. Other increase attempts were expected. Two other major tentative decisions were made by the committee Thursday. One and moderate income families with children and give a bigger break than the House bill to middle income persons who itemize deductions. This proposal, by Finance Committee chairman Russell Long, D-La., said the committee probably would approve a bill in excess of \$31.5 billion and he expected the Senate to act more when it reached the floor. However, most of the increases apparently will be in 1975 tax cuts. The committee Thursday rejected a move to increase the maximum 1974 tax rebate from \$200 to \$500. All of the rebate increase would have gone to those making more than \$20,000. Other increase attempts were expected. Two other major tentative decisions were made by the committee Thursday. One and moderate income families with children and give a bigger break than the House bill to middle income persons who itemize deductions. This proposal, by Finance Committee chairman Russell Long, D-La., said the committee probably would approve a bill in excess of \$31.5 billion and he expected the Senate to act more when it reached the floor. However, most of the increases apparently will be in 1975 tax cuts. The committee Thursday rejected a move to increase the maximum 1974 tax rebate from \$200 to \$500. All of the rebate increase would have gone to those making more than \$20,000. Other increase attempts were expected. Two other major tentative decisions were made by the committee Thursday. One and moderate income families with children and give a bigger break than the House bill to middle income persons who itemize deductions. This proposal, by Finance Committee chairman Russell Long, D-La., said the committee probably would approve a bill in excess of \$31.5 billion and he expected the Senate to act more when it reached the floor. However, most of the increases apparently will be in 1975 tax cuts. The committee Thursday rejected a move to increase the maximum 1974 tax rebate from \$200 to \$500. All of the rebate increase would have gone to those making more than \$20,000. Other increase attempts were expected. Two other major tentative decisions were made by the committee Thursday. One and moderate income families with children and give a bigger break than the House bill to middle income persons who itemize deductions. This proposal, by Finance Committee chairman Russell Long, D-La., said the committee probably would approve a bill in excess of \$31.5 billion and he expected the Senate to act more when it reached the floor. However, most of the increases apparently will be in 1975 tax cuts. The committee Thursday rejected a move to increase the maximum 1974 tax rebate from \$200 to \$500. All of the rebate increase would have gone to those making more than \$20,000. Other increase attempts were expected. Two other major tentative decisions were made by the committee Thursday. One and moderate income families with children and give a bigger break than the House bill to middle income persons who itemize deductions. This proposal, by Finance Committee chairman Russell Long, D-La., said the committee probably would approve a bill in excess of \$31.5 billion and he expected the Senate to act more when it reached the floor. However, most of the increases apparently will be in 1975 tax cuts. The committee Thursday rejected a move to increase the maximum 1974 tax rebate from \$200 to \$500. All of the rebate increase would have gone to those making more than \$20,000. Other increase attempts were expected. Two other major tentative decisions were made by the committee Thursday. One and moderate income families with children and give a bigger break than the House bill to middle income persons who itemize deductions. This proposal, by Finance Committee chairman Russell Long, D-La., said the committee probably would approve a bill in excess of \$31.5 billion and he expected the Senate to act more when it reached the floor. However, most of the increases apparently will be in 1975 tax cuts. The committee Thursday rejected a move to increase the maximum 1974 tax rebate from \$200 to \$500. All of the rebate increase would have gone to those making more than \$20,000. Other increase attempts were expected. Two other major tentative decisions were made by the committee Thursday. One and moderate income families with children and give a bigger break than the House bill to middle income persons who itemize deductions. This proposal, by Finance Committee chairman Russell Long, D-La., said the committee probably would approve a bill in excess of \$31.5 billion and he expected the Senate to act more when it reached the floor. However, most of the increases apparently will be in 1975 tax cuts. The committee Thursday rejected a move to increase the maximum 1974 tax rebate from \$200 to \$500. All of the rebate increase would have gone to those making more than \$20,000. Other increase attempts were expected. Two other major tentative decisions were made by the committee Thursday. One and moderate income families with children and give a bigger break than the House bill to middle income persons who itemize deductions. This proposal, by Finance Committee chairman Russell Long, D-La., said the committee probably would approve a bill in excess of \$31.5 billion and he expected the Senate to act more when it reached the floor. However, most of the increases apparently will be in 1975 tax cuts. The committee Thursday rejected a move to increase the maximum 1974 tax rebate from \$200 to \$500. All of the rebate increase would have gone to those making more than \$20,000. Other increase attempts were expected. Two other major tentative decisions were made by the committee Thursday. One and moderate income families with children and give a bigger break than the House bill to middle income persons who itemize deductions. This proposal, by Finance Committee chairman Russell Long, D-La., said the committee probably would approve a bill in excess of \$31.5 billion and he expected the Senate to act more when it reached the floor. However, most of the increases apparently will be in 1975 tax cuts. The committee Thursday rejected a move to increase the maximum 1974 tax rebate from \$200 to \$500. All of the rebate increase would have gone to those making more than \$20,000. Other increase attempts were expected. Two other major tentative decisions were made by the committee Thursday. One and moderate income families with children and give a bigger break than the House bill to middle income persons who itemize deductions. This proposal, by Finance Committee chairman Russell Long, D-La., said the committee probably would approve a bill in excess of \$31.5 billion and he expected the Senate to act more when it reached the floor. However, most of the increases apparently will be in 1975 tax cuts. The committee Thursday rejected a move to increase the maximum 1974 tax rebate from \$200 to \$500. All of the rebate increase would have gone to those making more than \$20,000. Other increase attempts were expected. Two other major tentative decisions were made by the committee Thursday. One and moderate income families with children and give a bigger break than the House bill to middle income persons who itemize deductions. This proposal, by Finance Committee chairman Russell Long, D-La., said the committee probably would approve a bill in excess of \$31.5 billion and he expected the Senate to act more when it reached the floor. However, most of the increases apparently will be in 1975 tax cuts. The committee Thursday rejected a move to increase the maximum 1974 tax rebate from \$200 to \$500. All of the rebate increase would have gone to those making more than \$20,000. Other increase attempts were expected. Two other major tentative decisions were made by the committee Thursday. One and moderate income families with children and give a bigger break than the House bill to middle income persons who itemize deductions. This proposal, by Finance Committee chairman Russell Long, D-La., said the committee probably would approve a bill in excess of \$31.5 billion and he expected the Senate to act more when it reached the floor. However, most of the increases apparently will be in 1975 tax cuts. The committee Thursday rejected a move to increase the maximum 1974 tax rebate from \$200 to \$500. All of the rebate increase would have gone to those making more than \$20,000. Other increase attempts were expected. Two other major tentative decisions were made by the committee Thursday. One and moderate income families with children and give a bigger break than the House bill to middle income persons who itemize deductions. This proposal, by Finance Committee chairman Russell Long, D-La., said the committee probably would approve a bill in excess of \$31.5 billion and he expected the Senate to act more when it reached the floor. However, most of the increases apparently will be in 1975 tax cuts. The committee Thursday rejected a move to increase the maximum 1974 tax rebate from \$200 to \$500. All of the rebate increase would have gone to those making more than \$20,000. Other increase attempts were expected. Two other major tentative decisions were made by the committee Thursday. One and moderate income families with children and give a bigger break than the House bill to middle income persons who itemize deductions. This proposal, by Finance Committee chairman Russell Long, D-La., said the committee probably would approve a bill in excess of \$31.5 billion and he expected the Senate to act more when it reached the floor. However, most of the increases apparently will be in 1975 tax cuts. The committee Thursday rejected a move to increase the maximum 1974 tax rebate from \$200 to \$500. All of the rebate increase would have gone to those making more than \$20,000. Other increase attempts were expected. Two other major tentative decisions were made by the committee Thursday. One and moderate income families with children and give a bigger break than the House bill to middle income persons who itemize deductions. This proposal, by Finance Committee chairman Russell Long, D-La., said the committee probably would approve a bill in excess of \$31.5 billion and he expected the Senate to act more when it reached the floor. However, most of the increases apparently will be in 1975 tax cuts. The committee Thursday rejected a move to increase the maximum 1974 tax rebate from \$200 to \$500. All of the rebate increase would have gone to those making more than \$20,000. Other increase attempts were expected. Two other major tentative decisions were made by the committee Thursday. One and moderate income families with children and give a bigger break than the House bill to middle income persons who itemize deductions. This proposal, by Finance Committee chairman Russell Long, D-La., said the committee probably would approve a bill in excess of \$31.5 billion and he expected the Senate to act more when it reached the floor. However, most of the increases apparently will be in 1975 tax cuts. The committee Thursday rejected a move to increase the maximum 1974 tax rebate from \$200 to \$500. All of the rebate increase would have gone to those making more than \$20,000. Other increase attempts were expected. Two other major tentative decisions were made by the committee Thursday. One and moderate income families with children and give a bigger break than the House bill to middle income persons who itemize deductions. This proposal, by Finance Committee chairman Russell Long, D-La., said the committee probably would approve a bill in excess of \$31.5 billion and he expected the Senate to act more when it reached the floor. However, most of the increases apparently will be in 1975 tax cuts. The committee Thursday rejected a move to increase the maximum 1974 tax rebate from \$200 to \$500. All of the rebate increase would have gone to those making more than \$20,000. Other increase attempts were expected. Two other major tentative decisions were made by the committee Thursday. One and moderate income families with children and give a bigger break than the House bill to middle income persons who itemize deductions. This proposal, by Finance Committee chairman Russell Long, D-La., said the committee probably would approve a bill in excess of \$31.5 billion and he expected the Senate to act more when it reached the floor. However, most of the increases apparently will be in 1975 tax cuts. The committee Thursday rejected a move to increase the maximum 1974 tax rebate from \$200 to \$500. All of the rebate increase would have gone to those making more than \$20,000. Other increase attempts were expected. Two other major tentative decisions were made by the committee Thursday. One and moderate income families with children and give a bigger break than the House bill to middle income persons who itemize deductions. This proposal, by Finance Committee chairman Russell Long, D-La., said the committee probably would approve a bill in excess of \$31.5 billion and he expected the Senate to act more when it reached the floor. However, most of the increases apparently will be in 1975 tax cuts. The committee Thursday rejected a move to increase the maximum 1974 tax rebate from \$200 to \$500. All of the rebate increase would have gone to those making more than \$20,000. Other increase attempts were expected. Two other major tentative decisions were made by the committee Thursday. One and moderate income families with children and give a bigger break than the House bill to middle income persons who itemize deductions. This proposal, by Finance Committee chairman Russell Long, D-La., said the committee probably would approve a bill in excess of \$31.5 billion and he expected the Senate to act more when it reached the floor. However, most of the increases apparently will be in 1975 tax cuts. The committee Thursday rejected a move to increase the maximum 1974 tax rebate from \$200 to \$500. All of the rebate increase would have gone to those making more than \$20,000. Other increase attempts were expected. Two other major tentative decisions were made by the committee Thursday. One and moderate income families with children and give a bigger break than the House bill to middle income persons who itemize deductions. This proposal, by Finance Committee chairman Russell Long, D-La., said the committee probably would approve a bill in excess of \$31.5 billion and he expected the Senate to act more when it reached the floor. However, most of the increases apparently will be in 1975 tax cuts. The committee Thursday rejected a move to increase the maximum 1974 tax rebate from \$200 to \$500. All of the rebate increase would have gone to those making more than \$20,000. Other increase attempts were expected. Two other major tentative decisions were made by the committee Thursday. One and moderate income families with children and give a bigger break than the House bill to middle income persons who itemize deductions. This proposal, by Finance Committee chairman Russell Long, D-La., said the committee probably would approve a bill in excess of \$31.5 billion and he expected the Senate to act more when it reached the floor. However, most of the increases apparently will be in 1975 tax cuts. The committee Thursday rejected a move to increase the maximum 1974 tax rebate from \$200 to \$500. All of the rebate increase would have gone to those making more than \$20,000. Other increase attempts were expected. Two other major tentative decisions were made by the committee Thursday. One and moderate income families with children and give a bigger break than the House bill to middle income persons who itemize deductions. This proposal, by Finance Committee chairman Russell Long, D-La., said the committee probably would approve a bill in excess of \$31.5 billion and he expected the Senate to act more when it reached the floor. However, most of the increases apparently will be in 1975 tax cuts. The committee Thursday rejected a move to increase the maximum 1974 tax rebate from \$200 to \$500. All of the rebate increase would have gone to those making more than \$20,000. Other increase attempts were expected. Two other major tentative decisions were made by the committee Thursday. One and moderate income families with children and give a bigger break than the House bill to middle income persons who itemize deductions. This proposal, by Finance Committee chairman Russell Long, D-La., said the committee probably would approve a bill in excess of \$31.5 billion and he expected the Senate to act more when it reached the floor. However, most of the increases apparently will be in 1975 tax cuts. The committee Thursday rejected a move to increase the maximum 1974 tax rebate from \$200 to \$500. All of the rebate increase would have gone to those making more than \$20,000. Other increase attempts were expected. Two other major tentative decisions were made by the committee Thursday. One and moderate income families with children and give a bigger break than the House bill to middle income persons who itemize deductions. This proposal, by Finance Committee chairman Russell Long, D-La., said the committee probably would approve a bill in excess of \$31.5 billion and he expected the Senate to act more when it reached the floor. However, most of the increases apparently will be in 1975 tax cuts. The committee Thursday rejected a move to increase the maximum 1974 tax rebate from \$200 to \$500. All of the rebate increase would have gone to those making more than \$20,000. Other increase attempts were expected. Two other major tentative decisions were made by the committee Thursday. One and moderate income families with children and give a bigger break than the House bill to middle income persons who itemize deductions. This proposal, by Finance Committee chairman Russell Long, D-La., said the committee probably would approve a bill in excess of \$31.5 billion and he expected the Senate to act more when it reached the floor. However, most of the increases apparently will be in 1975 tax cuts. The committee Thursday rejected a move to increase the maximum 1974 tax rebate from \$200 to \$500. All of the rebate increase would have gone to those making more than \$20,000. Other increase attempts were expected. Two other major tentative decisions were made by the committee Thursday. One and moderate income families with children and give a bigger break than the House bill to middle income persons who itemize deductions. This proposal, by Finance Committee chairman Russell Long, D-La., said the committee probably would approve a bill in excess of \$31.5 billion and he expected the Senate to act more when it reached the floor. However, most of the increases apparently will be in 1975 tax cuts. The committee Thursday rejected a move to increase the maximum 1974 tax rebate from \$200 to \$500. All of the rebate increase would have gone to those making more than \$20,000. Other increase attempts were expected. Two other major tentative decisions were made by the committee Thursday. One and moderate income families with children and give a bigger break than the House bill to middle income persons who itemize deductions. This proposal, by Finance Committee chairman Russell Long, D-La., said the committee probably would approve a bill in excess of \$31.5 billion and he expected the Senate to act more when it reached the floor. However, most of the increases apparently will be in 1975 tax cuts. The committee Thursday rejected a move to increase the maximum 1974 tax rebate from \$200 to \$500. All of the rebate increase would have gone to those making more than \$20,000. Other increase attempts were expected. Two other major tentative decisions were made by the committee Thursday. One and moderate income families with children and give a bigger break than the House bill to middle income persons who itemize deductions. This proposal, by Finance Committee chairman Russell Long, D-La., said the committee probably would approve a bill in excess of \$31.5 billion and he expected the Senate to act more when it reached the floor. However, most of the increases apparently will be in 1975 tax cuts. The committee Thursday rejected a move to increase the maximum 1974 tax rebate from \$200 to \$500. All of the rebate increase would have gone to those making more than \$20,000. Other increase attempts were expected. Two other major tentative decisions were made by the committee Thursday. One and moderate income families with children and give a bigger break than the House bill to middle income persons who itemize deductions. This proposal, by Finance Committee chairman Russell Long, D-La., said the committee probably would approve a bill in excess of \$31.5 billion and he expected the Senate to act more when it reached the floor. However, most of the increases apparently will be in 1975 tax cuts. The committee Thursday rejected a move to increase the maximum 1974 tax rebate from \$200 to \$500. All of the rebate increase would have gone to those making more than \$20,000. Other increase attempts were expected. Two other major tentative decisions were made by the committee Thursday. One and moderate income families with children and give a bigger break than the House bill to middle income persons who itemize deductions. This proposal, by Finance Committee chairman Russell Long, D-La., said the committee probably would approve a bill in excess of \$31.5 billion and he expected the Senate to act more when it reached the floor. However, most of the increases apparently will be in 1975 tax cuts. The committee Thursday rejected a move to increase the maximum 1974 tax rebate from \$200 to \$500. All of the rebate increase would have gone to those making more than \$20,000. Other increase attempts were expected. Two other major tentative decisions were made by the committee Thursday. One and moderate income families with children and give a bigger break than the House bill to middle income persons who itemize deductions. This proposal, by Finance Committee chairman Russell Long, D-La., said the committee probably would approve a bill in excess of \$31.5 billion and he expected the Senate to act more when it reached the floor. However, most of the increases apparently will be in 1975 tax cuts. The committee Thursday rejected a move to increase the maximum 1974 tax rebate from \$200 to \$500. All of the rebate increase would have gone to those making more than \$20,000. Other increase attempts were expected. Two other major tentative decisions were made by the committee Thursday. One and moderate income families with children